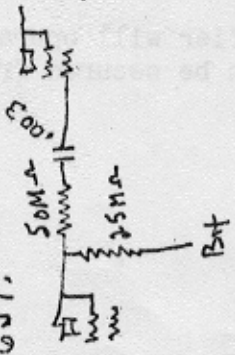


**GIBSON
MODEL EH-185
AMPLIFIER**

SEE NOTE

NOTE BELOW IS
CORRECTED CIRCUIT
FOR PLATE OF 2ND
6J7.



WINDINGS

110 VOLTS
A.C.

- 106V

FIELD
150Ω

CHASSIS

16 MFD

20W
20K