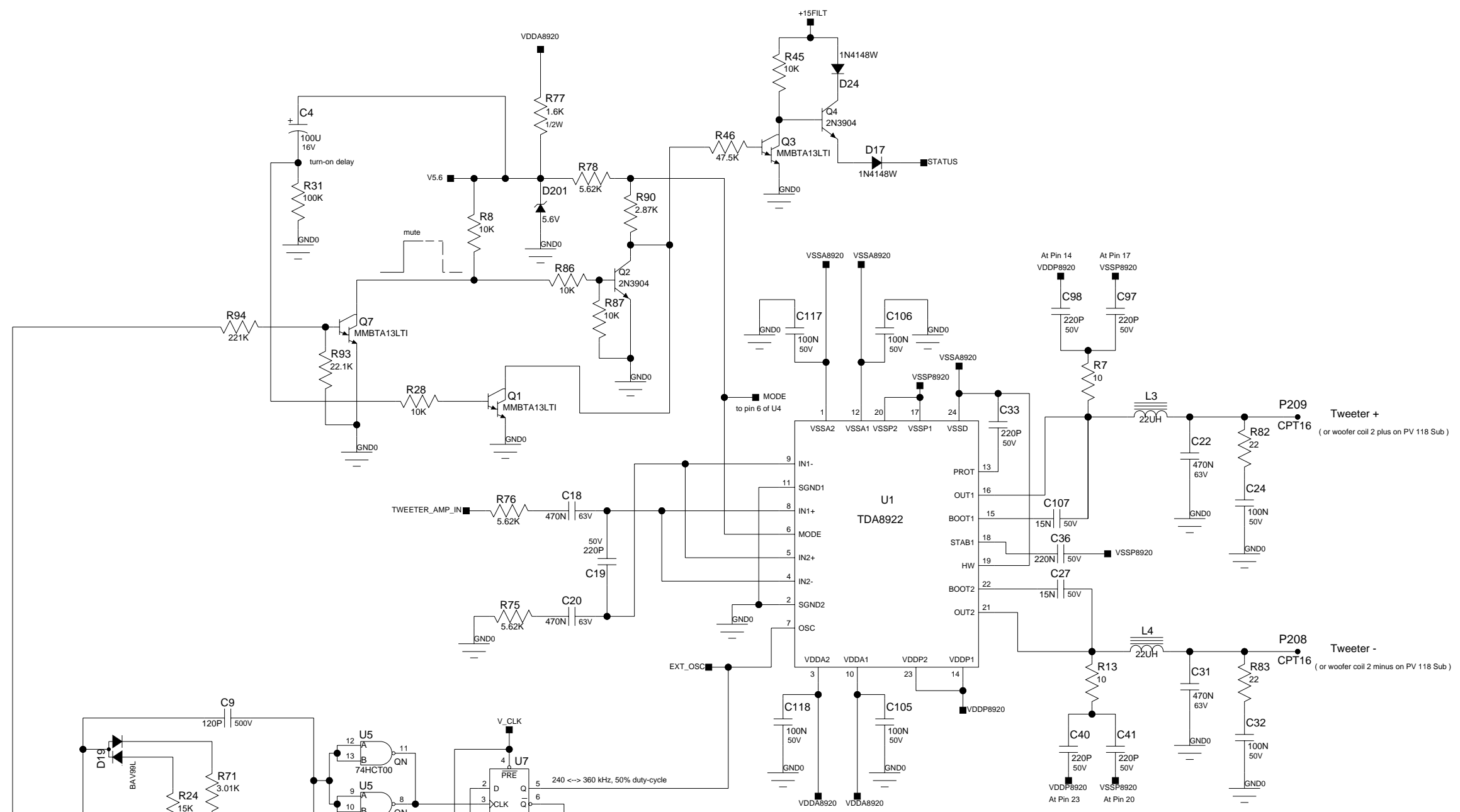
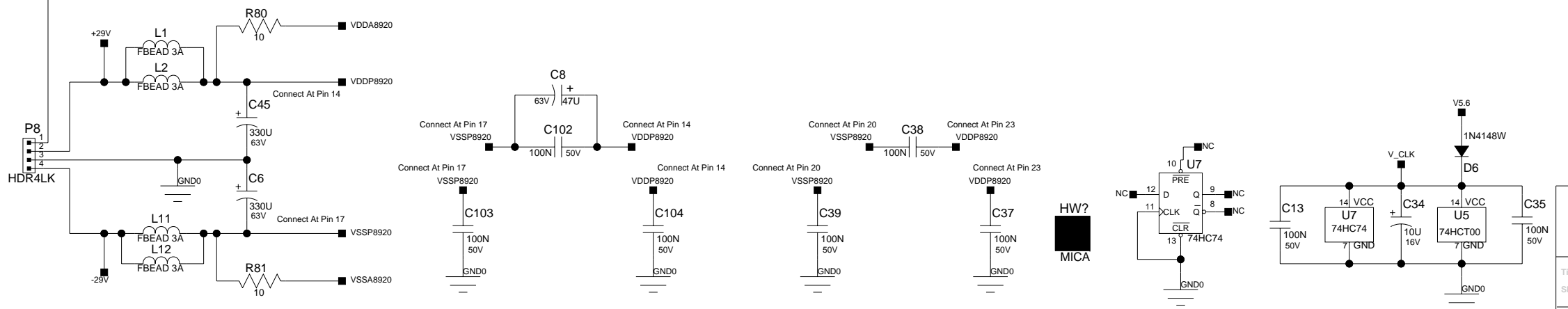


PEAVEY
Peavey Electronics Corp.
P. O. Box 2898
Meridian, MS 39301

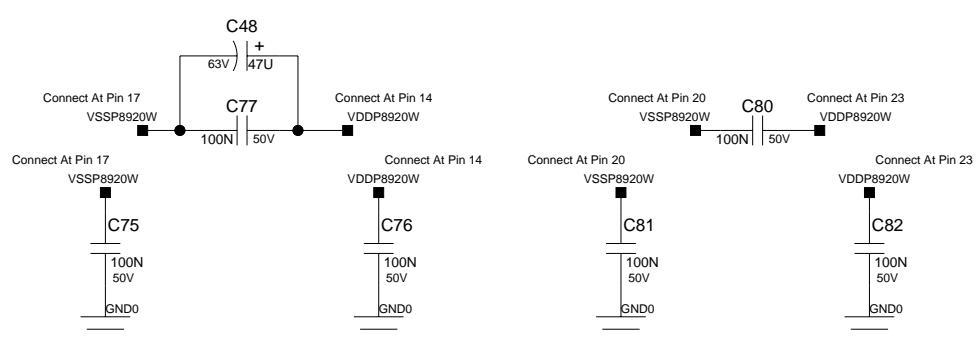
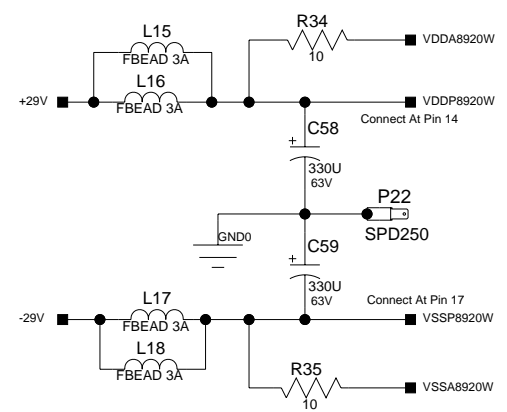
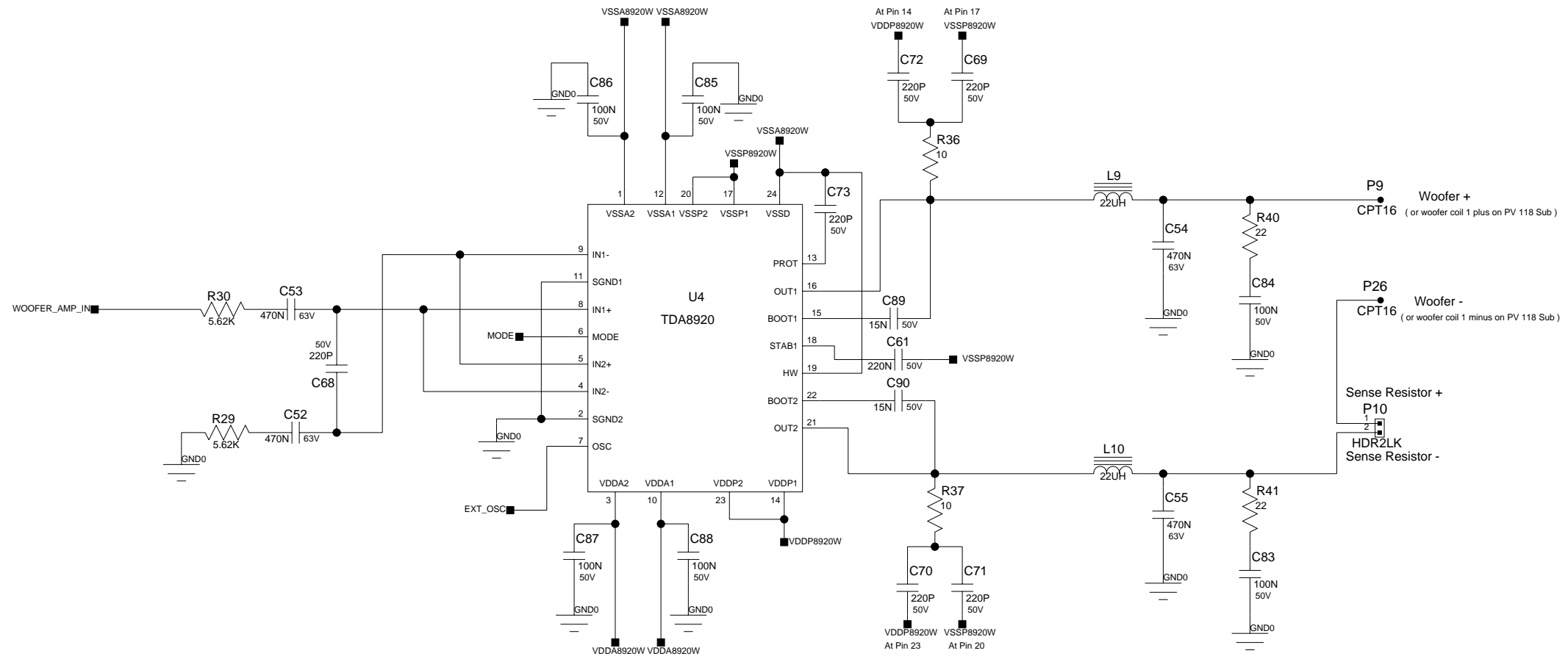
Title: **PV_15PM_D_32120232**
Sheet Title:
C Sheet 2 of 5 Date: 6-23-2009_12:23



Install 30418646 TDA8920BTH at U1 for PV 118D Sub



Title: PV_15PM_D_32120232
Sheet Title:



HW?
MICA

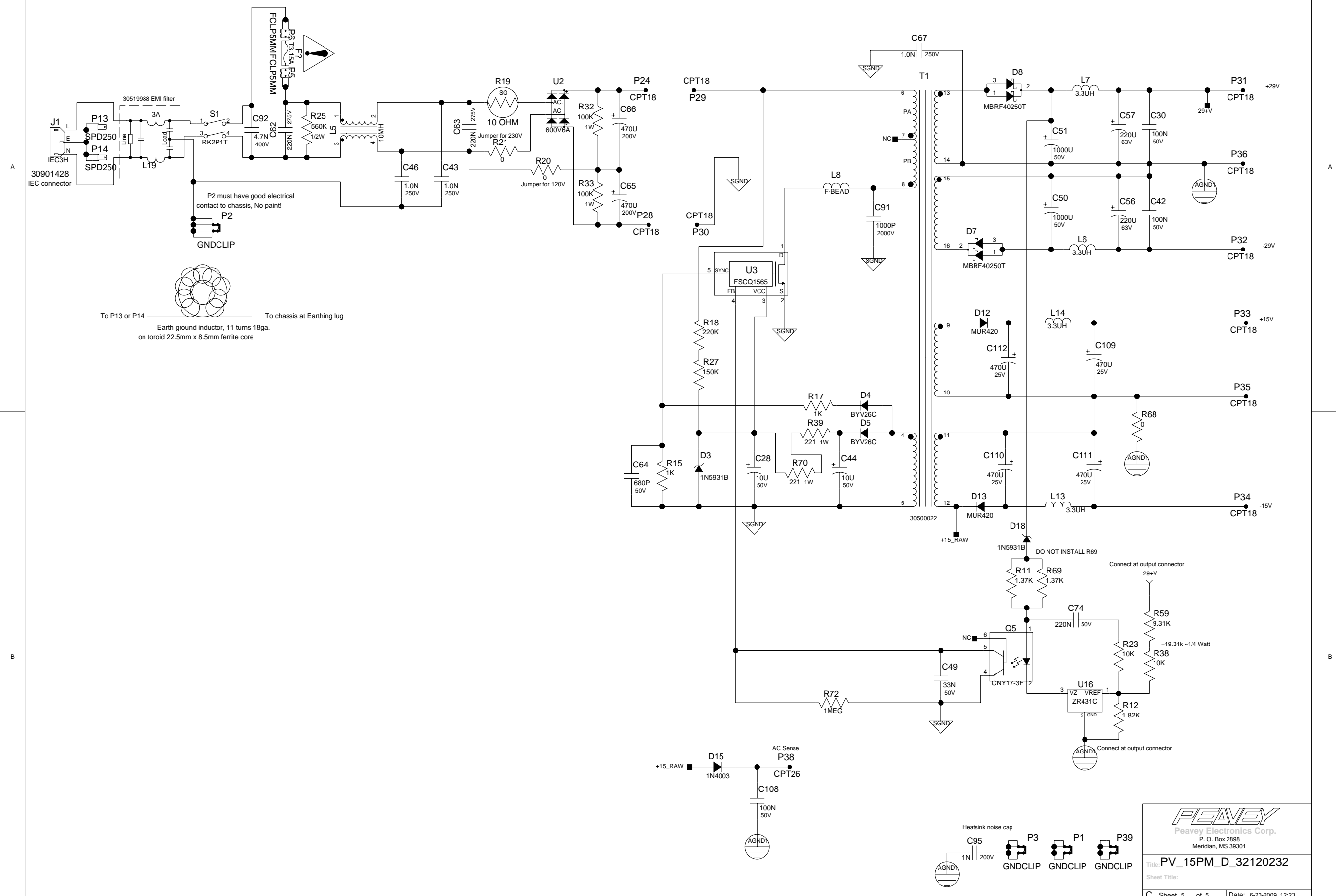


Title: PV_15PM_D_32120232

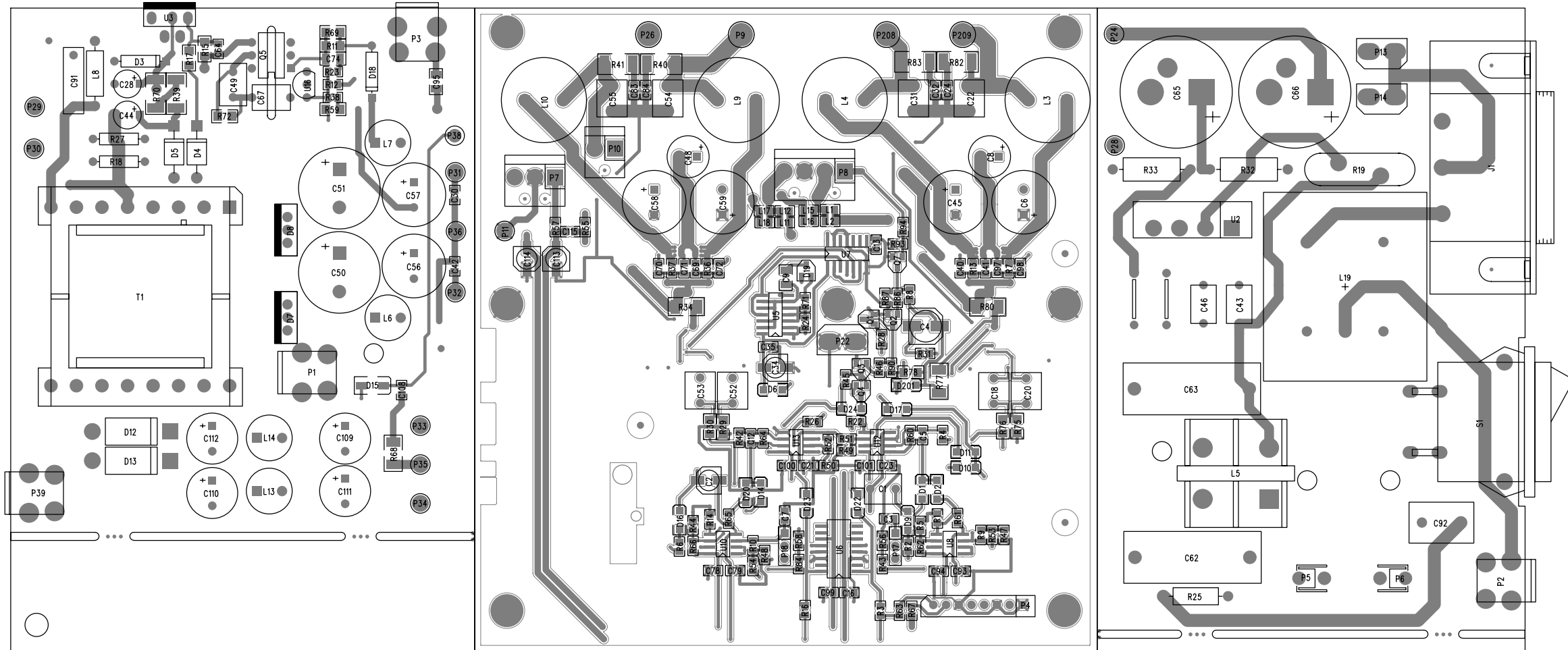
Sheet Title:

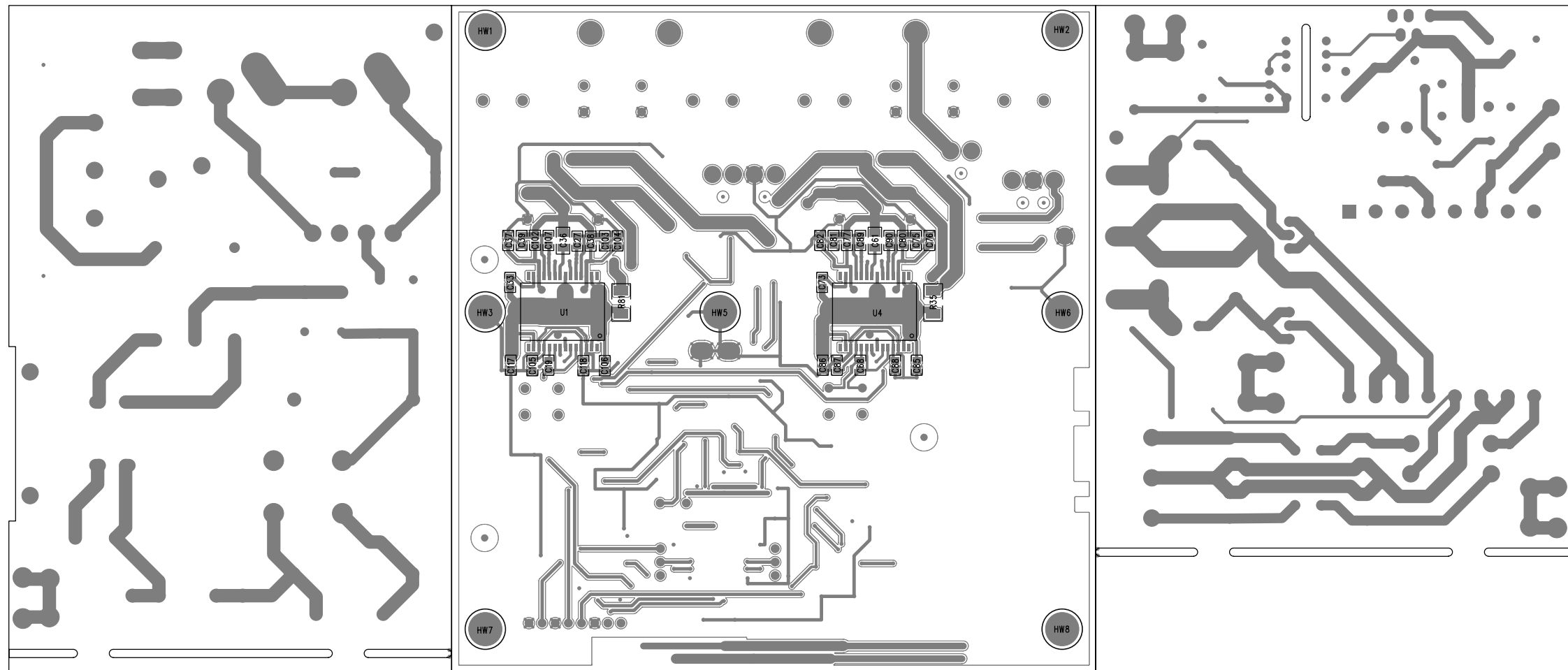
C Sheet 4 of 5 Date: 6-23-2009_12:23





Title: PV_15PM_D_32120232
Sheet Title:





BILL OF MATERIAL REPORT

REPORT DATE/TIME: 6/29/2009 10:53:51 AM

BOARD NAME: PV 15PM Class D ASSEMBLY LEVEL NUMBER: 29098653

PROJECT NUMBER: P0600006 DESIGNER: JTH-32120232

Qty.	Part #	Description	Reference Designators
1	30200036	1.0M 1/4W 5% MF 1206	R72
2	30200047	1K 1/4W 1% MF 1206	R15 R17
1	30200050	9.31K 1/4W 1% MF 1206	R59
5	30200118	5.62K 1/4W 1% MF 1206	R29 R30 R75 R76 R78
2	30200154	1.37K 1/4W 1% MF 1206	R11 R69
2	30200164	0.0 JUMPER SMT 0805	R53 R54
19	30200174	10K 1/10W 1% MF 0805	R1 R2 R3 R4 R5 R6 R8 R14 R16 R23 R28 R38 R42 R43 R44 R45 R84 R86 R87
2	30200181	100 1/10W 1% MF 0805	R56 R58
5	30200194	100K 1/10W 1% MF 0805	R31 R61 R62 R65 R66
6	30200196	10 1/10W 1% MF 0805	R7 R13 R36 R37 R55 R57
1	30200205	47.5K 1/10W 1% MF 0805	R46
4	30200238	22 1W 5% MF 2512	R40 R41 R82 R83
2	30200241	4.70 1/10W 1% MF 0805	R63 R67
1	30200249	3.01K 1/10W 1% MF 0805	R71
2	30200256	22.1K 1/10W 1% MF 0805	R60 R93
1	30200285	1.6K 1/2W 5% MF 2010	R77
1	30200329	7.5K 1/10W 1% MF 0805	R50

2	30200330	33.2K	1/10W	1%	MF	0805	R9 R10
2	30200334	15.0K	1/10W	1%	MF	0805	R24 R64
1	30200342	221K	1/10W	1%	MF	0805	R94
4	30200358	10	1/2W	1%	MF	2010	R34 R35 R80 R81
1	30200359	0.0	1/2W	1%	MF	2010	R68
5	30200408	2.87K	1/10W	1%	MF	0805	R47 R48 R51 R52 R90
1	30200437	1.82K	1/10W	1%	MF	0805	R12
3	30200494	12.4K	1/10W	1%	MF	0805	R22 R26 R49
2	30200525	221 1W		1%	MF	2512	R39 R70
2	30210017	100K	1W	5%	MO	AXL	R32 R33
1	30230046	560K	1/2W	5%	FP	AXL	R25
1	30240035	150K	1/4W	5%	CF	AXL	R27
1	30240036	220K	1/4W	5%	CF	AXL	R18
1	30240200	10 OHM	3A			INRUSH LIMITER	R19
3	30300069	0.22UF	50V	10%	X7R	1206	C36 C61 C74
3	30300080	10UF	16V	20%	EL	SMT4	C34 C113 C114
1	30300083	100UF	16V	20%	EL	SMT6	C4
1	30300088	100PF	50V	5%	NPO	0805	C5
14	30300089	220PF	50V	5%	NPO	0805	C3 C7 C19 C33 C40 C41 C68 C69 C70 C71 C72 C73 C97 C98
40	30300093	0.1UF	50V	10%	X7R	0805	C13 C16 C21 C23 C24 C30 C32 C35 C37 C38 C39 C42 C75 C76 C77 C78 C79 C80 C81 C82 C83 C84 C85 C86 C87 C88 C93 C94 C99 C100 C101 C102 C103 C104 C105 C106 C108 C115 C117 C118
1	30300103	120PF	500V	5%	NPO	1206	C9

1	30300109	1000PF 200V 5% NPO 1206	C95
1	30300131	10UF 35V 20% EL SMT4	C2
1	30300147	680PF 50V 5% NPO 0805	C64
4	30300154	0.015UF 50V 10% X7R 0805	C27 C89 C90 C107
1	30300174	1000PF 100V 5% NPO 0805	C12
1	30320114	4700PF 400V 20% "X" RADH	C92
2	30320185	10UF 50V 20% ELL RAD	C28 C44
4	30320323	330UF 63V 20% ELS RADH	C6 C45 C58 C59
4	30320324	470UF 25V 20% ELS RAD	C109 C110 C111 C112
2	30320327	0.22UF 275V 20% "X" RADH	C62 C63
2	30320566	220UF 63V 20% EL LOW ESR	C56 C57
2	30320581	1000UF 50V 20% EL RADH	C50 C51
2	30320582	470UF 200V 20% EL SNAP IN	C65 C66
3	30320586	1000PF 250V 20% "Y2" RADH	C43 C46 C67
2	30320623	47UF 63V 20% EL RAD	C8 C48
1	30320689	1000PF 2000V 10% PP RADH	C91
1	30330115	0.033UF 50V 5% PE RAD	C49
1	30330158	1UF 63V 5% PES RAD	C1
8	30330159	0.47UF 63V 5% PES RAD	C18 C20 C22 C31 C52 C53 C54 C55
2	30400026	1A 600V 35N -DIODE T&R	D4 D5
1	30400035	QUASI RESONANT PWR SWITCH	U3
1	30400173	CNY17-3F BASELESS OPTO	Q5
1	30400605	BR RECT INLINE 600V 6A	U2
2	30403603	MBRF40250T DL SCHOTKY DIODE	D7 D8
2	30405931	1N5931B, 18V, 1.5W, ZENER	D3 D18
1	30407431	ZR431C ADJ SHUNT REG. RAD	U16

1	30418020	74HC74 2- D FLIP FLOP SMT	U7
1	30418042	74HCT00 4- 2IN NAND SO14	U5
3	30418051	MMBTA13LTI NPN DARL. SMT	Q1 Q3 Q7
4	30418053	4560 DUAL OPAMP SO8	U8 U10 U12 U13
2	30418135	2N3904 NPN SOT23	Q2 Q4
1	30418231	NJM13700 DUAL OTA SMT	U6
1	30418261	1N4003 - SMT - SMA PKG	D15
13	30418328	1N4148W SWITCHING DIODE	D1 D2 D6 D9 D10 D11 D14 D16 D17 D20 D22 D23 D24
1	30418546	5.6V ZENER (SOD123)-SMT	D201
1	30418646	TDA8920 CLASS D POWER AMP	U4
1	30418655	BAV99L DUAL 4148 DIODE SO	D19
1	30418675	TDA8922 CLASS D POWER AMP	U1
2	30420420	MUR420 FAST RECOVERY DIODE	D12 D13
1	30500022	ESCORT 150 POWER TRANSFORMER	T1
1	30502122	FERRITE BEAD INDUCTOR T&R	L8
4	30504103	22UH, 5A INDUCTOR	L3 L4 L9 L10
8	30519982	FERRITE BEAD 3A SMT	L1 L2 L11 L12 L15 L16 L17 L18
1	30519985	COMMON MODE CHOKE	L5
1	30519988	3A, EMI FILTER CHOKE	L19
4	30519989	OUTPUT CHOKE (SLUG CORE)	L6 L7 L13 L14
2	30600136	0 OHM 22GA JMPR AXL	R20 R21
1	30901428	PWR INLET, RA SCREW MT PC RA GND	J1
2	30901714	FUSE CLIP, 5 X 20MM -T&A	P5 P6
4	30901785	SCREW TERM, 6-32 -PCB MT	P1 P2 P3 P39

4	30901888	4-40X.25X.125--BRASS	HW1 HW2 HW7 HW8
3	30901892	STND .125 .114HW,SW,NB	HW3 HW5 HW6
1	31322377	SWITCH 2P1T ROCKER PC H	S1
11	33713813	WR-TO-BD CRIMP TERM 18GA	P11 P24 P28 P29 P30 P31 P32 P33 P34 P35 P36
3	33716194	SPADE .250 PC MNT .093	P13 P14 P22
1	33716721	8 HDR V SPOX 2.5MM TIN	P4
2	33717052	3 HDR V SR .100" TIN	P17 P18
1	33719089	4 HDR V SR .156" TIN LK	P8
1	33719107	2 HDR V SR .156" TIN LK	P10
1	33719111	3 HDR V SR .156" TIN LK	P7
4	CABL13817	16GA W/CRIMP TERM 73713817	P9 P26 P208 P209
1	CABL13818	26GA W/CRIMP TERM 73713818	P38

 END OF BILL OF MATERIAL REPORT
