

# BOSS DC-3 SERVICE NOTES

First Edition

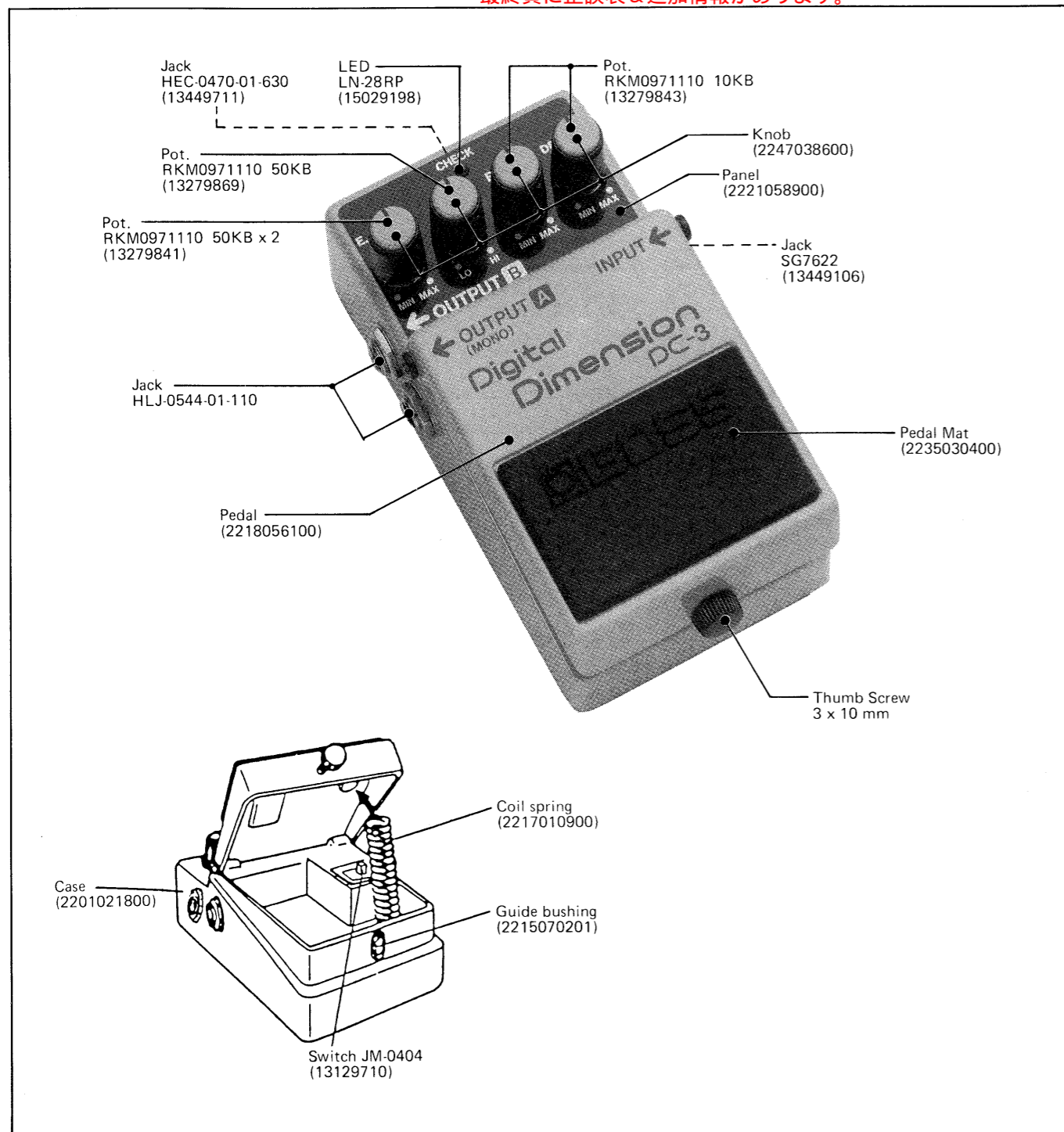
## SPECIFICATIONS

- Power Source : 9V DC (9V Battery x1, AC Adapter PSA series or RPW-7)
- Current Draw : 65mA @9V DC
- Controls : Effect Level, Equalizer, Rate and Depth
- Switch : Effect ON/OFF
- Indicator : Effect ON/OFF (=Battery check)
- Jacks : Input, Output A and B, AC Adapter
- Sampling Rate : 50kHz
- Frequency Response : 20Hz to 20kHz (+1/-3dB)
- Residual Noise : Less than -100dBm (IHF-A)
- Input Impedance : 1MΩ
- Output Load Impedance : More than 20kΩ
- Dimensions : 70 (W) x 55 (H) x 125 (D) mm / 2-3/4 x 2-3/16 x 4-15/16 in.
- Weight : 450 g / 1 lb.

ERRATA & SUPPLEMENT is attached at the end of the page.  
最終頁に正誤表&追加情報があります。

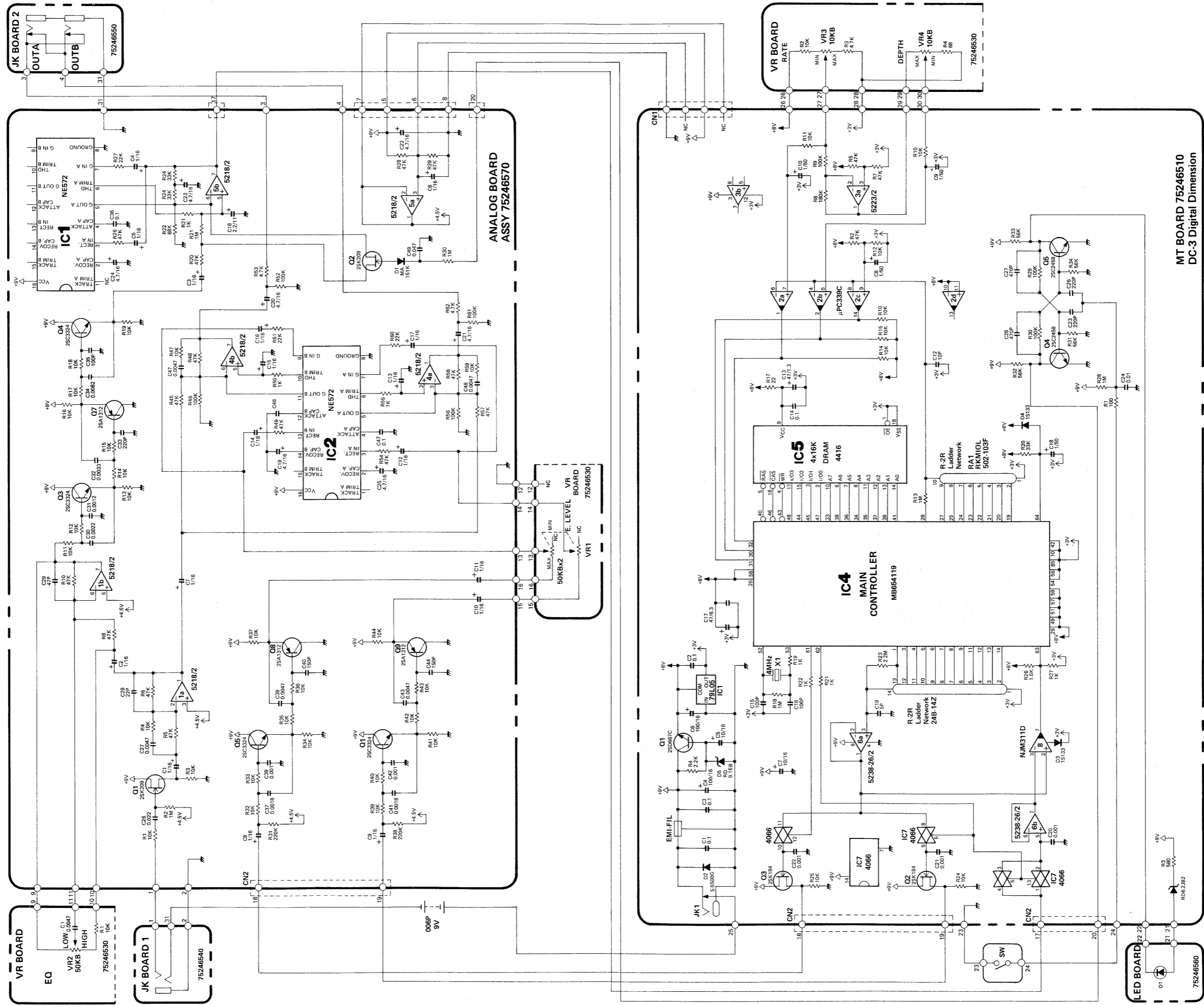
## PARTS LIST

CASING			
2201021800	Case		
2221058900	Panel		
2218056100	Pedal		
2202085100	Cover		
2235030400	Pedal Mat		
2235030500	Base		
KNOB			
2247038600	Knob		
JACK			
13449155	HLJ0544-01-110		OUTPUT A,B
13449106	SG-7622		INPUT
13449711	HEC-0470-01-630		9V DC IN
SWITCH			
13129710	JM-0404		
PCB ASSY			
7524652000	MT Board		
	<ul style="list-style-type: none"> <li>■ Replacement MT Board includes the following.</li> <li>■ MT Boardには下記の基板も含まれます。</li> </ul>		
	Analog Board		
	Note: Chip Components on Analog Board are not available as replacement.		
	アナログボード上のチップ部品(補修用)は供給致しません。		
	VR Board		
	JK Board 1		
	JK Board 2		
	LED Board		
	<ul style="list-style-type: none"> <li>■ Only Analog Board can be available independently.</li> <li>■ Analog Boardのみは単体で発注可能です。</li> </ul>		
	2292056701 Analog Board		
	Note: Chip Components on Analog Board are not available as replacement.		
	アナログボード上のチップ部品(補修用)は供給致しません。		
IC			
15229844	MB654119		gate array
15179394	MN4264-12		4x16K DRAM
15189111J1	NJM311D		comparator
15189196	μPC339C		comparator
15159115H0	HD14066BP		analog SW
15189195	M5238L-26		op amp
15189185	M5223L		op amp
15199115	MC79L05CP		regulator
TRANSISTOR/FET			
15129602	2SD667C		
15129144	2SC2458LGR		
15139131	2SK184GR		
DIODE			
15019125	1S-133		
15019209T0	S-5500G		
15019304	RD6.2JB2		
15019541	RD9.1EB3		
15029198	LN-28RP		LED
POTENTIOMETER			
13279843	RK0971110	10KB	RATE, DEPTH
13279869	RK0971110	50KB	PRE EQ
13279841	RK0971110	50KBx2	E.LEVEL
RESISTOR			
13919196	24B-14Z		ladder network
13919172	RKM10L 502-103F		ladder network
MISCELLANEOUS			
12389729	CSA-4.00MG		Ceramic Resonator
13529144	DSS306-91FZ103N		EMI Filter
2220011800	PCB Holder		



1 2 3 4 5 6 7 8 9 10 11 12 13 14 15 16 17 18 19 20 21 22 23 24 25 26 27 28 29 30 31 32 33 34 35 36 37

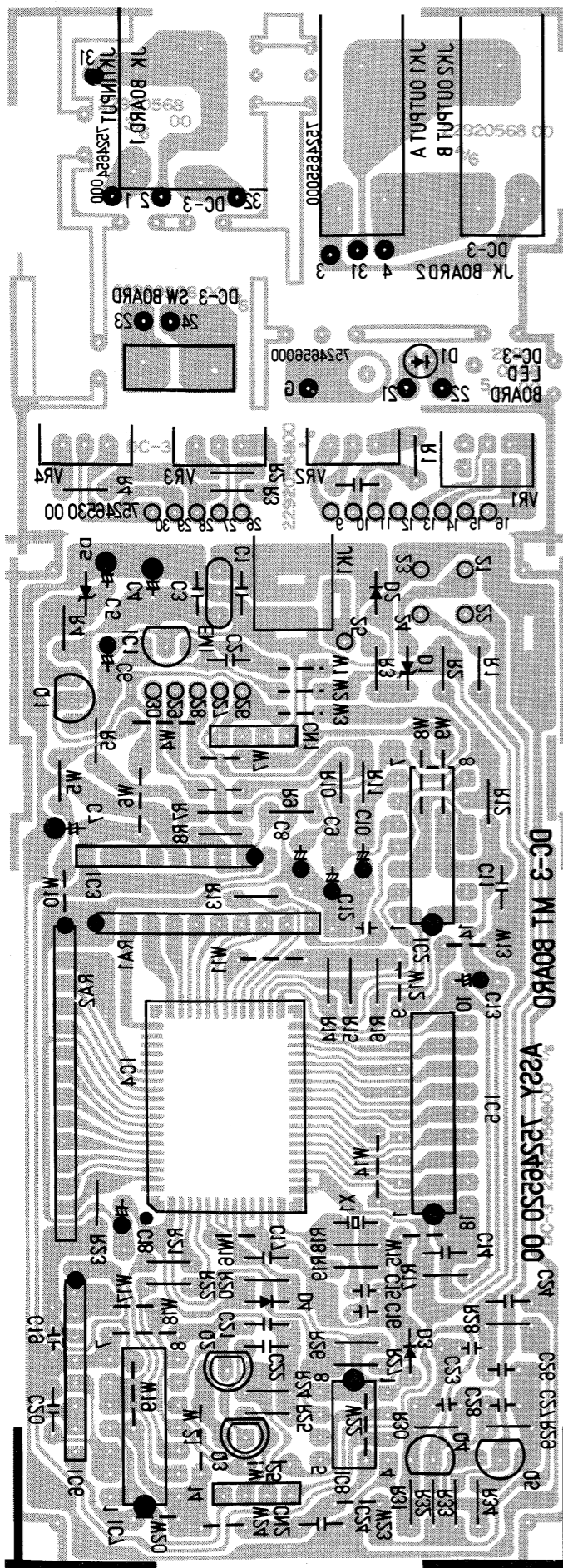
A  
B  
C  
D  
E  
F  
G  
H  
I  
J  
K  
L  
M  
N  
O  
P  
Q  
R  
S  
T  
U  
V  
W  
X  
Y  
Z



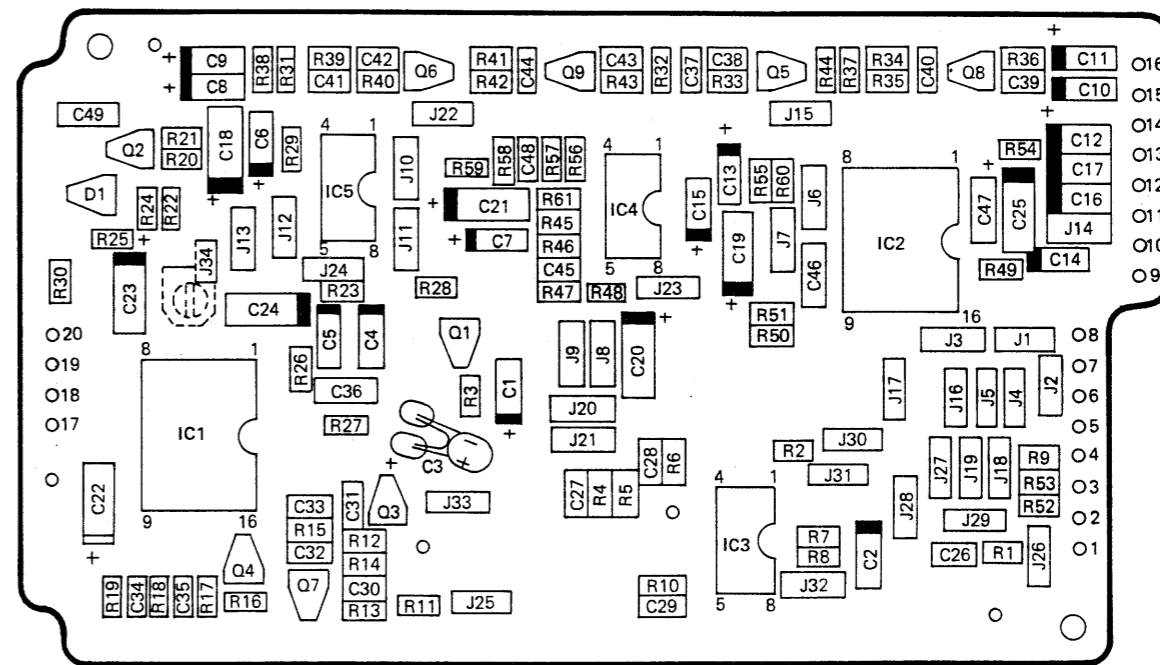
MT BOARD 75246510  
DC-3 Digital Dimension

1 2 3 4 5 6 7 8 9 10 11 12 13 14 15 16 17 18 19 20 21 22 23 24 25 26 27 28 29 30 31 32 33 34 35 36 37 38

A  
B  
C  
D  
E  
F  
G  
H  
I  
J  
K  
L  
M  
N  
O  
P  
Q  
R  
S  
T



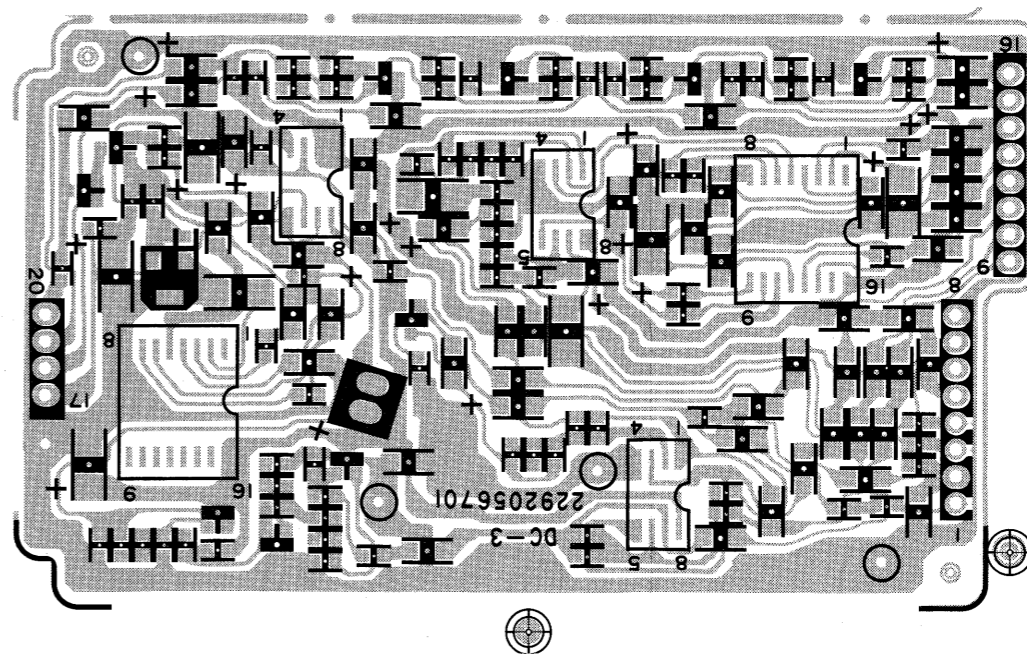
**JACK BOARD**  
**ASSY 7524652000**  
 (pcb 2292056800)  
 View from foil side



View from component side

**MT BOARD**  
**ASSY 7524652000**  
 (pcb 2292056860)  
 View from foil side

**ANALOG BOARD**  
**ASSY 7524652000**  
 (pcb 2292056701)  
 View from component side



## CHECKING

Connect an audio generator to INPUT jack and apply a 40mVp-p, 200Hz, square wave.  
Connect a scope to OUTPUT A jack and a dummy plug (open circuit) to OUTPUT B. Verify the waveform of each controls setting as illustrated below.

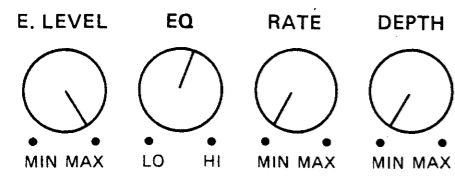
Exchange instrument connections (scope-B, dummy-A) and verify the result waveforms in the same manner as above.

## 点検

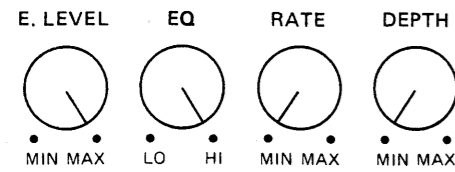
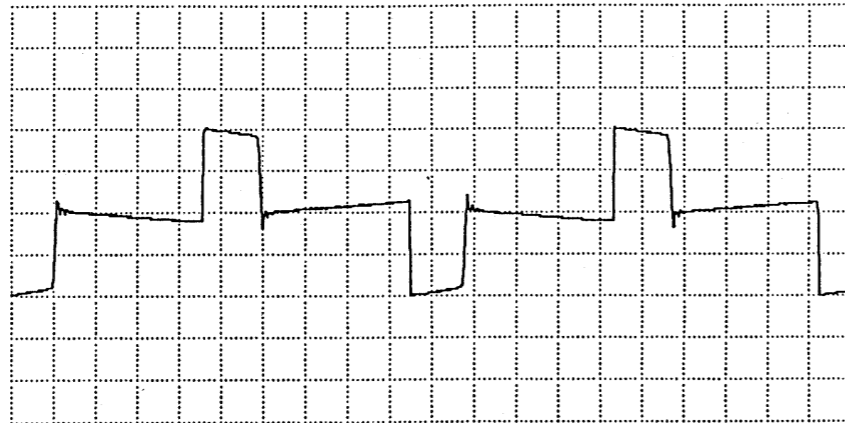
INPUTジャックに発振器を接続し、矩形波200Hz 40mVp-pを入力する。

OUTPUTジャックAにオシロスコープ、Bにダミープラグ(オープン)を接続し、下記の各セッティングにおける波形を確認する。

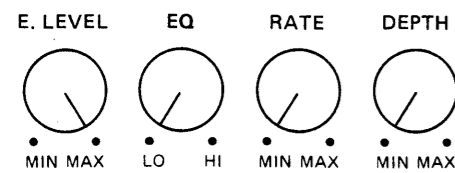
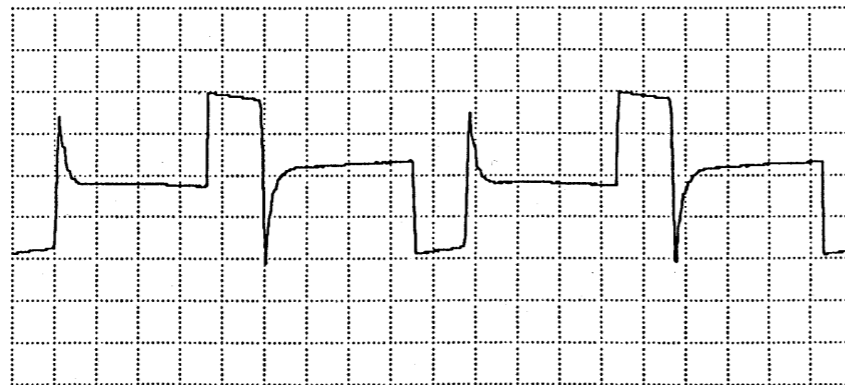
OUTPUTジャックAにダミープラグ(オープン)、Bにオシロスコープを接続し、同様に確認する。



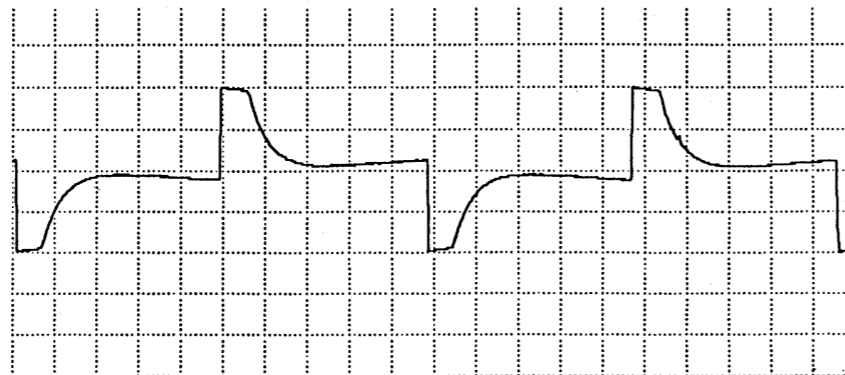
( 10mv/DIV  
500 $\mu$ s/DIV



( 10mv/DIV  
500 $\mu$ s/DIV



( 10mv/DIV  
500 $\mu$ s/DIV



Page	OLD (旧) →	NEW (新)												
1	<p>* PHOTOGRAPH / 写真 * PARTS LIST / パーツリスト</p> <p>2218056100 PEDAL →</p>	<p>2218056100 PEDAL (OLD TYPE) NOTE: SILK-SCREENED LETTER 注: へたれ上のシキは, "Digital Dimension DC-3"</p> <p>2218057600 PEDAL (NEW TYPE) NOTE: SILK-SCREENED LETTER 注: へたれ上のシキは, "Digital Space-D DC-3"</p>												
<p>Jack HEC.0470-01-630 (13449711)      LED LN-28RP (15029198)</p> <p>Pot. RKM0971110 50KB (13279869)</p> <p>Pot. RKM0971110 50KB x 2 (13279841)</p> <p>Jack HLJ.0544-01-110</p> <p>Pedal (old type) (2218056100) "Digital Dimension"</p> <p>Pedal (new) (2218057600) "Digital Space-D"</p> <p><b>PARTS LIST</b></p> <p>CASING</p> <table border="0"> <tr><td>2201021800</td><td>Case</td></tr> <tr><td>2221058900</td><td>Panel</td></tr> <tr><td><del>2218056100</del></td><td><del>Pedal</del></td></tr> <tr><td>2202085100</td><td>Cover</td></tr> <tr><td>2235030400</td><td>Pedal Mat</td></tr> <tr><td>2235030500</td><td>Base</td></tr> </table> <p>→ 2218056100 Pedal (old) --- "Digital Dimension" 2218057600 Pedal (new) --- "Digital Space-D"</p>			2201021800	Case	2221058900	Panel	<del>2218056100</del>	<del>Pedal</del>	2202085100	Cover	2235030400	Pedal Mat	2235030500	Base
2201021800	Case													
2221058900	Panel													
<del>2218056100</del>	<del>Pedal</del>													
2202085100	Cover													
2235030400	Pedal Mat													
2235030500	Base													