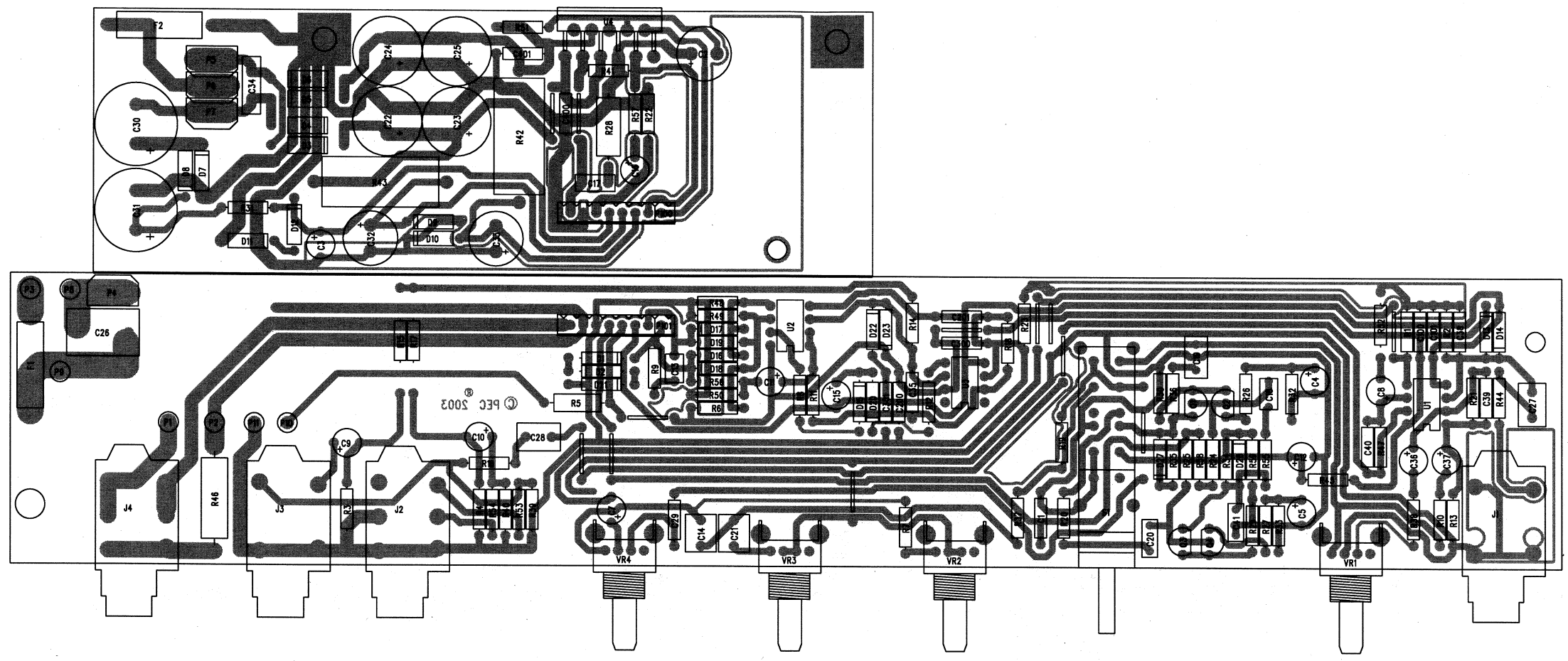
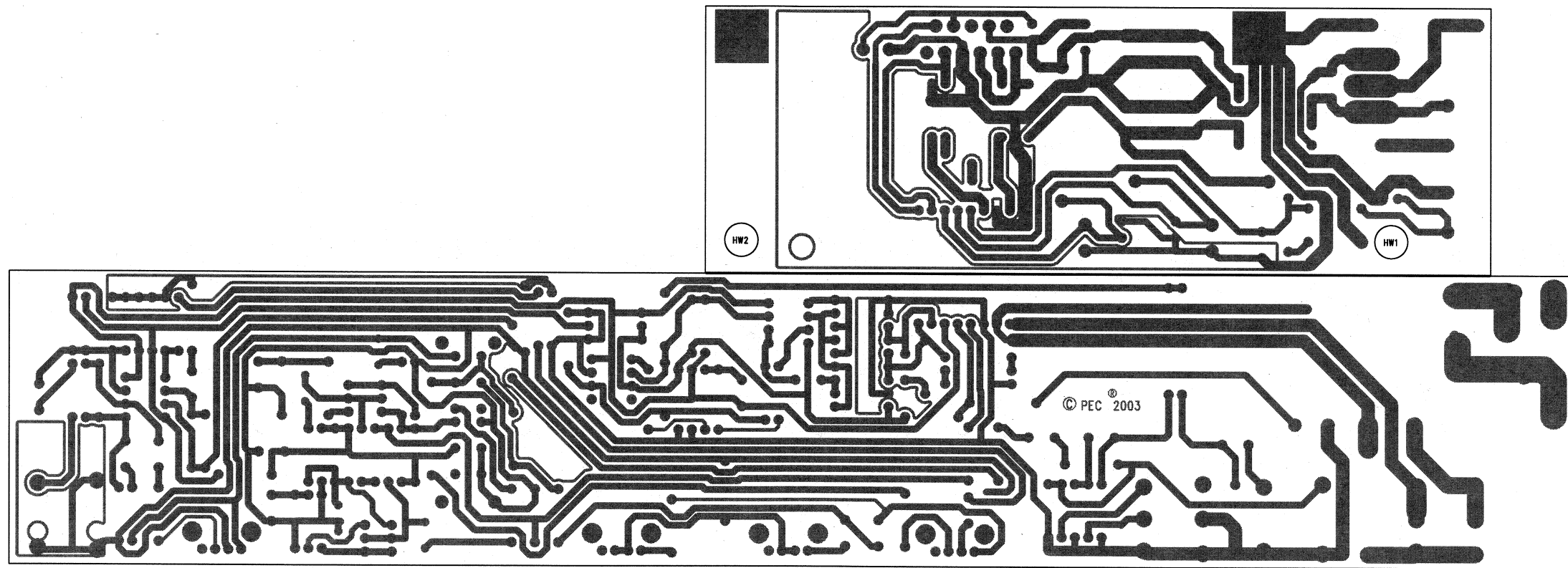


Peavey Electronics Corp.  
P. O. Box 2898  
Meridian, MS 39301

Title: **MAX 112**  
Sheet Title: **PREAMP / POWER AMP**  
Engineer: JOHN C. FIELDS  
B Sheet 2 of 2 Date: 5-10-2005\_11:33







1	70330158	1UF	63V	5%	PES	RAD	C14
1	70330159	0.47UF	63V	5%	PES	RAD	C21
1	70340000	1000PF	50V	10%	NPO	AXL	C29
1	70340052	39PF	50V	5%	NPO	AXL	C35
3	70340054	100PF	50V	10%	NPO	AXL	C38 C39 C40
9	70340100	0.1UF	50V	80-20%	Z5U	AXL	C1 C100 C101 C200 C201 C300 C301 C400 C401
4	70401740	2SC1740SIN	NPN	LN	RAD		Q1 Q2 Q3 Q4
1	70403886	LM3886	68W	AUDIO	PWR	AMP W/MUT	U4
1	70413080	LM3080N	CUSTOM	SELECTED			U3
2	70414560	4560	DUAL	OPAMP	DIP8		U1 U2
2	70464003	1N4003	200V	1A	SI	DIODE	D7 D8
15	70464148	1N4148	75V	10MA	DIODE		D1 D2 D13 D14 D15 D16 D17 D18 D19 D20 D21 D22 D23 D27 D28
4	70464744	1N4744A	15V	1W	5%	ZENER	D9 D10 D11 D12
4	70465393	1N5393-RL	1.5A	RECT	DIODE		D3 D4 D5 D6
2	70600533	8C	2.5MM	WPCB	WPCB	2.5"	P100 P101
2	70901712	1A	2AG	FUSE	T&R		F1 F2
2	70901891	STND	.437	T4-40,	SW,	AL	HW1 HW2
1	71190900	10KB	SINGL	12MM			VR1
1	71190901	10K15A	SINGL	12MM			VR3
1	71190904	50KB	SINGL	12MM			VR4
1	71190907	250K5A	SINGL	12MM			VR2
1	71322395	SWITCH	4P2T	RA	LEVER	PC H	S1
1	71466223	JACK,	STEREO	R/A	1/4"	6.5MM	J4
2	71466322	JACK,	MONO	R/A	1/4"	6.5MM	NINS J1 J3
1	71466323	JACK,	STEREO	R/A	1/4"	6.5MM	NINS J2

2	71600255	250	5W	10% W	AXLH	SL	R42. R43
5	73713813	WR-TO-BD	CRIMP	TERM	18GA		P1 P2 P3 P8 P9
2	73713818	WR-TO-BD	CRIMP	TERM	26GA		P10 P11
4	73716194	SPADE	.250	PC	MNT	.093	P4 P5 P6 P7
12	JUMPER	????????????????????????????????					JMP1 JMP2 JMP3 JMP4 JMP5 JMP6 JMP7 JMP8 JMP9 JMP10 JMP11 JMP12
1	MOUNT_HOLE_187	????????????????????????????????					MTG3
2	TAB_VCI	????????????????????????????????					TAB3 TAB4

-----  
 END OF BILL OF MATERIAL REPORT  
 -----

2	70240052	37.4K	1/4W	1%	MF	AXL	R24	R25
1	70240055	2.43K	1/4W	1%	MF	AXL	R59	
1	70240062	2.4K	1/4W	5%	CF	AXL	R53	
2	70240090	47	1/4W	5%	FP	AXL	R22	R23
1	70240119	16.5K	1/4W	1%	MF	AXL	R45	
2	70240151	100K	1/4W	1%	MF	AXL	R29	R30
3	70241037	243K	1/4W	1%	MF	AXL	R34	R35
2	70241078	1.82K	1/4W	1%	MF	AXL	R26	R27
1	70241093	3.9K	1/4W	5%	CF	AXL	R19	
1	70241122	3.92M	1/4W	1%	MF	AXL	R55	
1	70250080	100	2W	5%	MO	AXL	R46	
2	70320180	2.2UF	50V	20%	EL	RAD	C36	C37
9	70320181	22UF	50V	20%	EL	RAD	C3	C4
							C5	C7
							C8	C9
							C10	C11
							C12	
2	70320185	10UF	50V	20%	EL	RAD	C15	C16
4	70320186	1000UF	35V	20%	EL	RAD	C22	C23
							C24	C25
2	70320187	220UF	50V	20%	EL	RAD	C32	C33
1	70320248	0.01UF	1000V	80-20%	Z5U	RAD	C34	
1	70320264	100UF	63V	20%	EL	RAD	C2	
2	70320326	330UF	100V	20%	ELS	RADH	C30	C31
1	70320556	0.1UF	275V	10%	"X"	RADH	C26	
1	70330113	0.1UF	100V	10%	PPS	RAD	C17	
1	70330120	1500PF	50V	5%	PE	RAD	C13	
1	70330127	1800PF	50V	5%	PE	RAD	C18	
2	70330128	0.22UF	50V	5%	PE	RAD	C27	C28
1	70330129	0.1UF	50V	5%	PE	RAD	C20	
1	70330134	0.022UF	50V	5%	PE	RAD	C19	
1	70330156	1000PF	50V	5%	PE	RAD	C41	

BILL OF MATERIAL REPORT

REPORT DATE/TIME: 5/17/2005 9:57:09 AM

BOARD NAME: MAX 112 ASSEMBLY LEVEL NUMBER: 99060560

PROJECT NUMBER: P0300071 DESIGNER: EC

Qty.	Part #	Description	Reference Designators
1	70210015	4.7 1W 10% MO AXL	R28
1	70230018	1500 1/2W 5% CF AXL	R5
1	70240010	100 1/4W 5% CF AXL	R18
1	70240015	470 1/4W 5% CF AXL	R38
2	70240018	1500 1/4W 5% CF AXL	R32 R33
1	70240020	2200 1/4W 5% CF AXL	R52
4	70240021	2700 1/4W 5% CF AXL	R7 R8 R9 R10
1	70240022	3300 1/4W 5% CF AXL	R31
3	70240023	4700 1/4W 5% CF AXL	R16 R44 R54
3	70240024	6800 1/4W 5% CF AXL	R56 R57 R58
4	70240025	10K 1/4W 5% CF AXL	R11 R12 R13 R14
2	70240029	22K 1/4W 5% CF AXL	R15 R17
1	70240030	33K 1/4W 5% CF AXL	R21
5	70240031	47K 1/4W 5% CF AXL	R47 R48 R49 R50 R51
3	70240034	100K 1/4W 5% CF AXL	R39 R40 R41
4	70240036	220K 1/4W 5% CF AXL	R1 R2 R3 R4
1	70240040	2.2M 1/4W 5% CF AXL	R6
1	70240048	39K 1/4W 5% CF AXL	R20
1	70240049	8.2K 1/4W 5% CF AXL	R37