

Service Manual



BUGERA 1960 INFINIUM

British Classic 150-Watt Tube Amplifier Head with INFINIUM Tube Life Multiplier

Specifications	2
PCB Schematic	3
Parts List	10
Exploded Drawing	29
.....	36

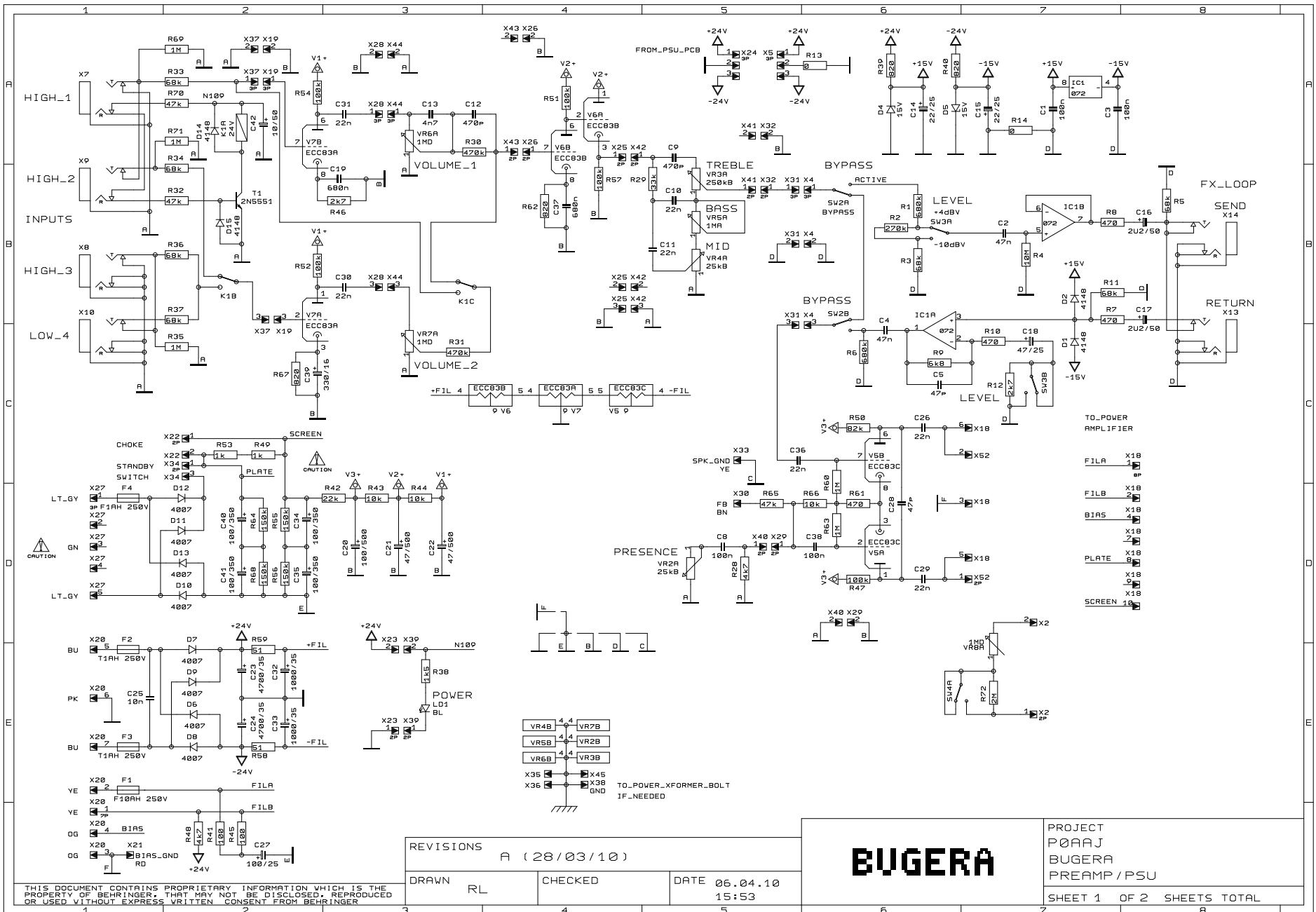
bugera-amps.com

Bugera

BUGERA 1960 INFINIUM

Specifications

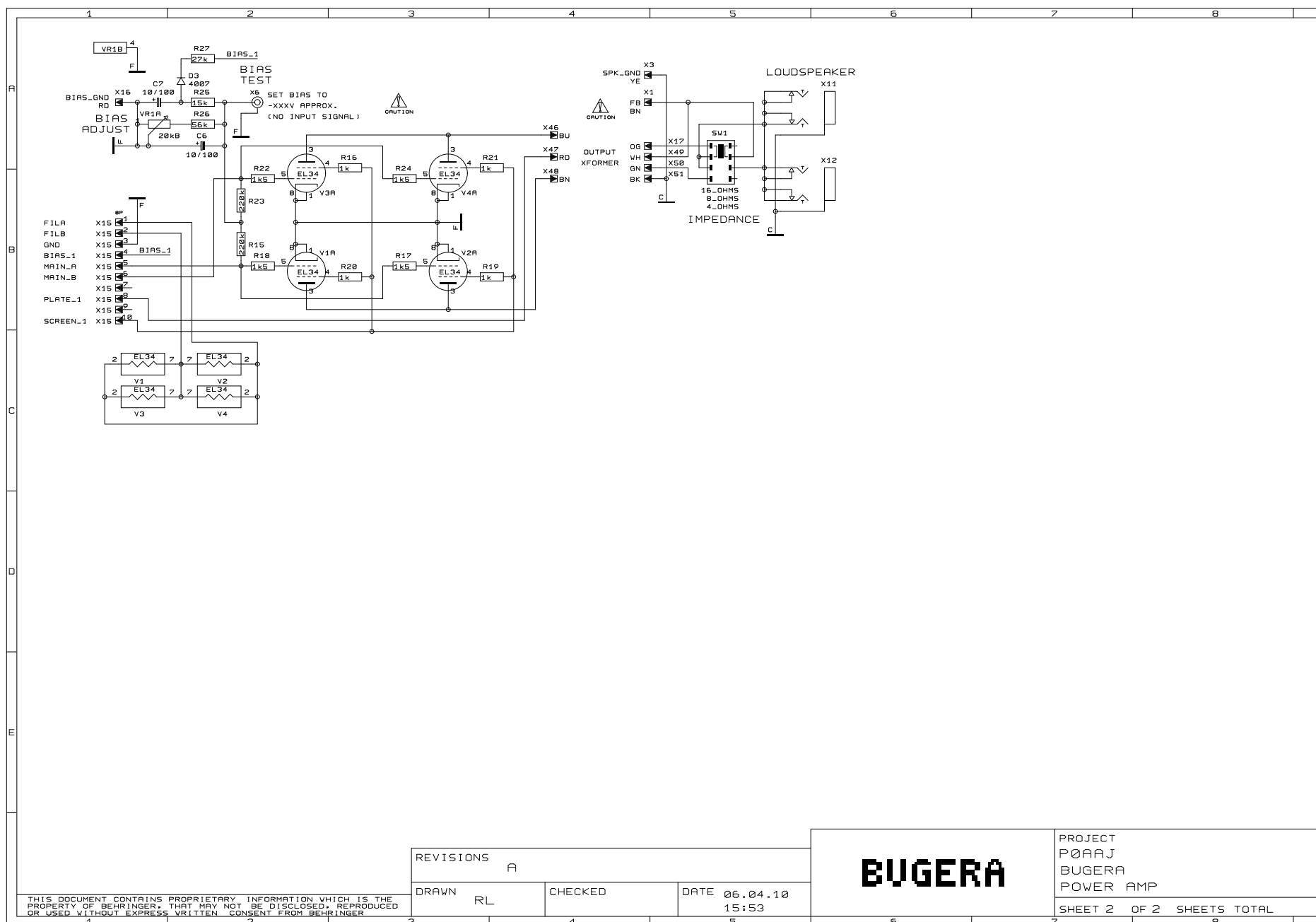
- Hand-built all-tube amplifier driven by 4 x EL34 tubes with a monstrous output transformer (now fully compatible with 6L6 and 5881, etc.)
- Two preamp channels with 4 input jacks perform in separate, parallel or cascaded operation, bridging the tonal eras of the '60s, '70s and '80s
- Vintage hot-rodded preamp mod from the early '80s featuring 3 x ECC83 tubes for terrifying tone and classic hi-gain
- Revolutionary INFINIUM Tube Life Multiplier technology:
 - Extends the life of your amplifier's expensive power tubes up to 20 times
 - Provides incredible reliability and consistent tone over the complete lifespan of your tubes
 - No need for expensive matched tube sets
 - Allows you to mix and match any combination of compatible tube types and brands
 - Monitors performance of each power tube continuously and displays defective tubes to allow for easy and individual replacement
- Post-phase splitter Master control with true bypass for authentic performance
- Original '60s tone control section with Bass, Mid, Treble and Presence
- FX Loop with dedicated Level switch and true Bypass function
- Impedance switch (4, 8 and 16 Ohms) to match virtually any speaker cabinet
- High-quality components and exceptionally rugged construction ensure long life

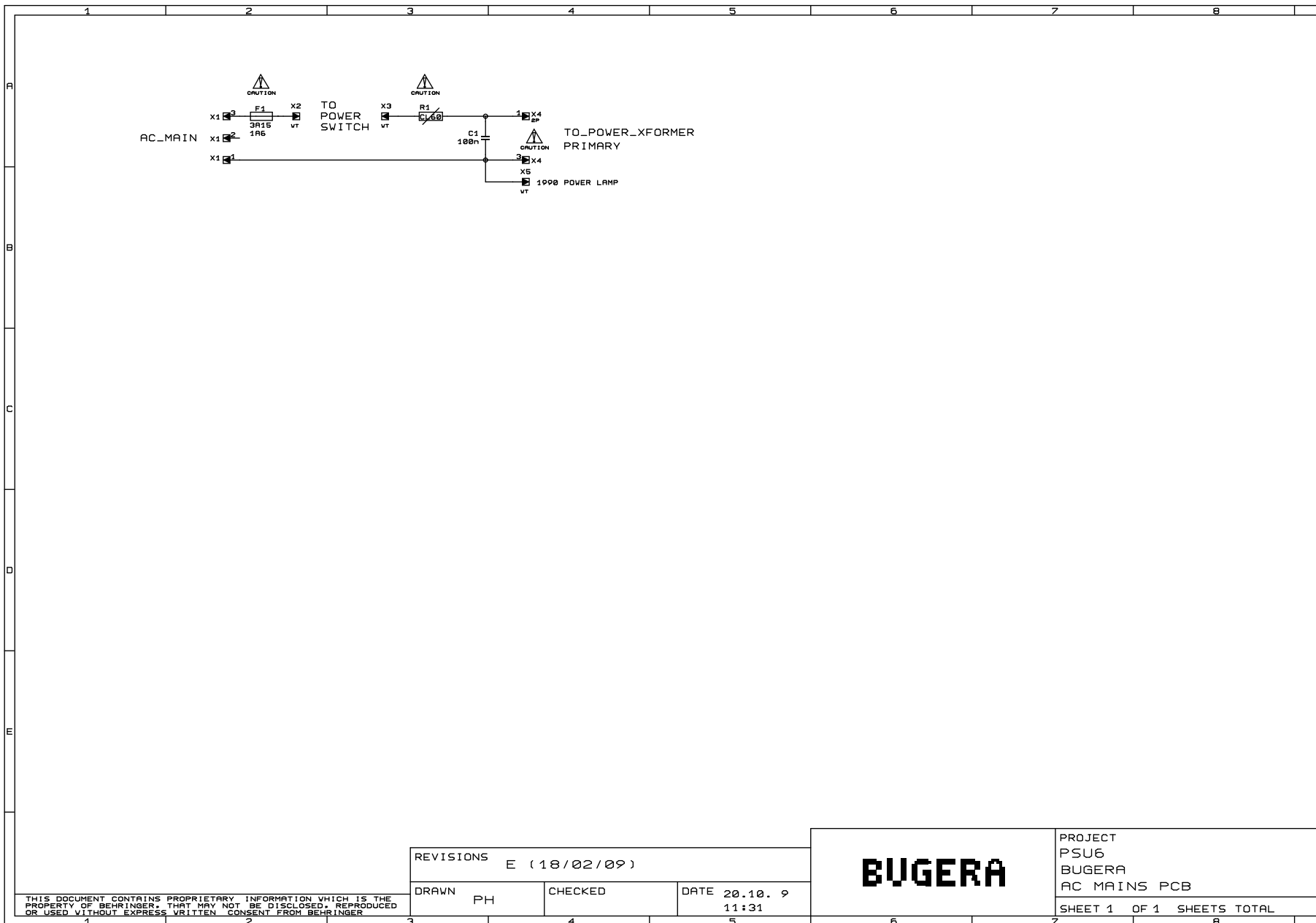


REVISIONS		A (28/03/10)	
DRAWN	RL	CHECKED	DATE 06.04.10 15:53

BUGERA	PROJECT P00AJ BUGERA PREAMP / PSU
SHEET 1 OF 2 SHEETS TOTAL	

THIS DOCUMENT CONTAINS PROPRIETARY INFORMATION WHICH IS THE PROPERTY OF BEHRINGER. THAT MAY NOT BE DISCLOSED, REPRODUCED OR USED WITHOUT EXPRESS WRITTEN CONSENT FROM BEHRINGER



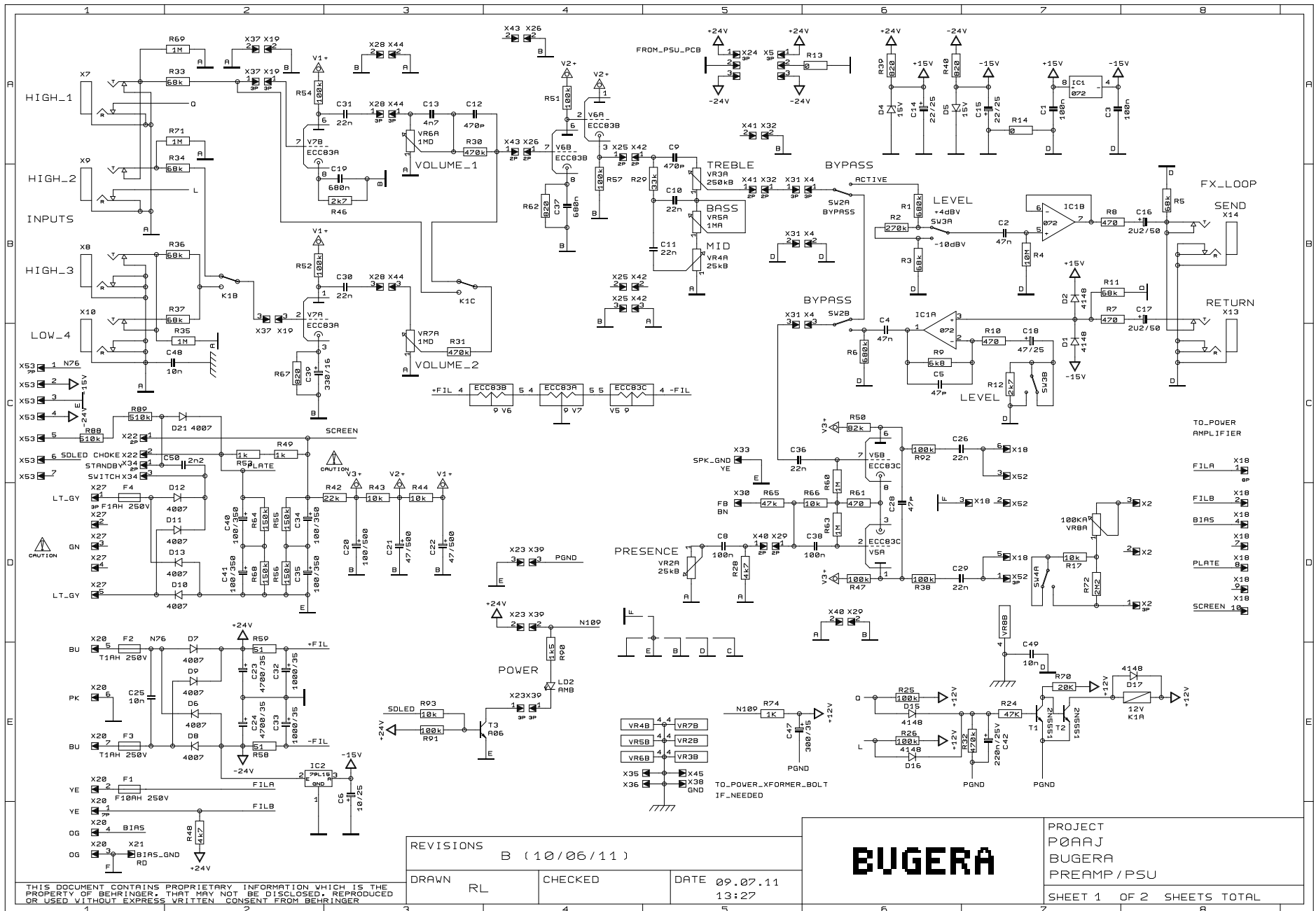


REVISIONS		
E (18/02/09)		
DRAWN	PH	CHECKED
DATE		20.10. 9
		11:31

BUGERA

PROJECT
PSU6
BUGERA
AC MAINS PCB
SHEET 1 OF 1 SHEETS TOTAL

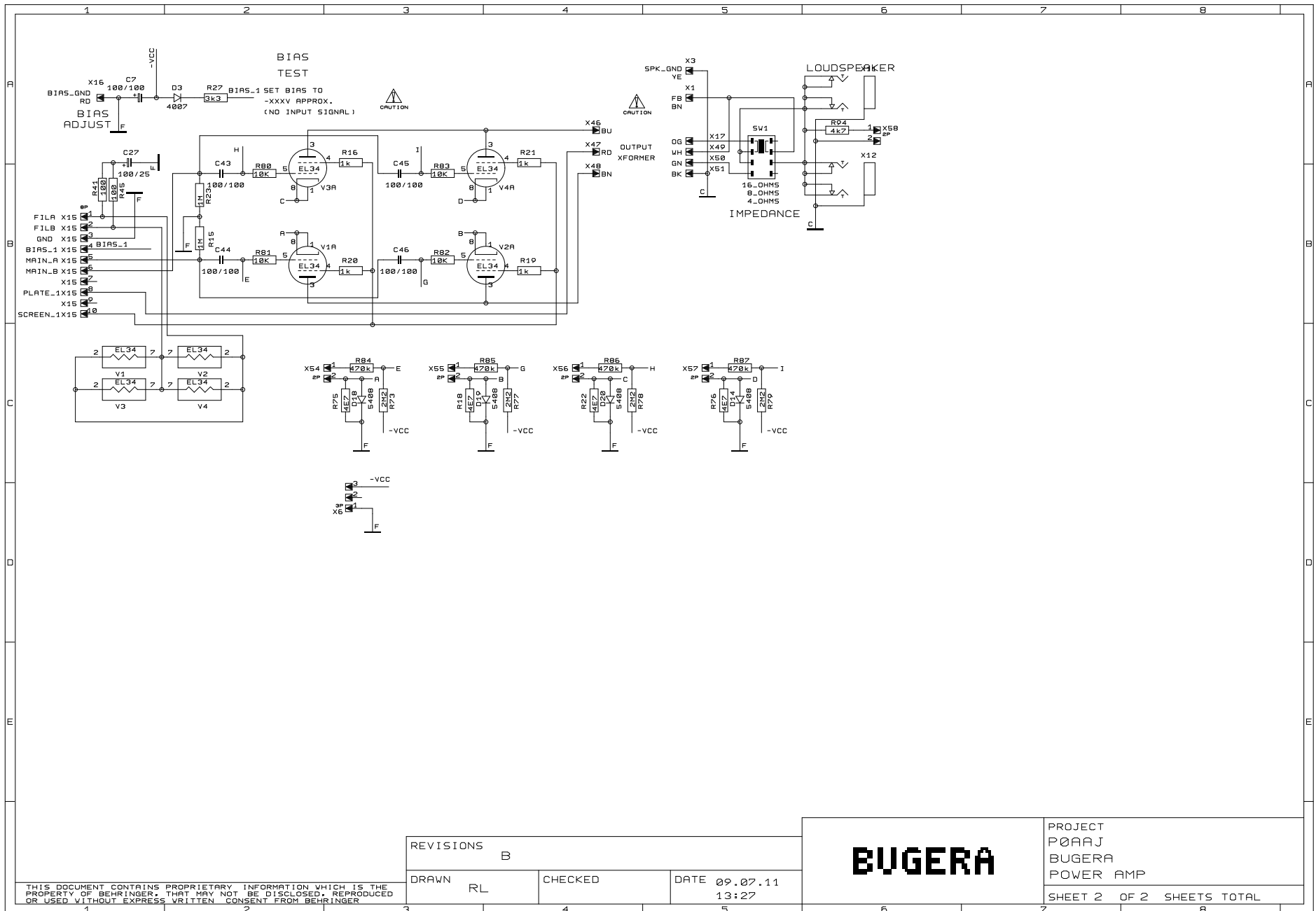
THIS DOCUMENT CONTAINS PROPRIETARY INFORMATION WHICH IS THE PROPERTY OF BEHRINGER. THAT MAY NOT BE DISCLOSED, REPRODUCED OR USED WITHOUT EXPRESS WRITTEN CONSENT FROM BEHRINGER

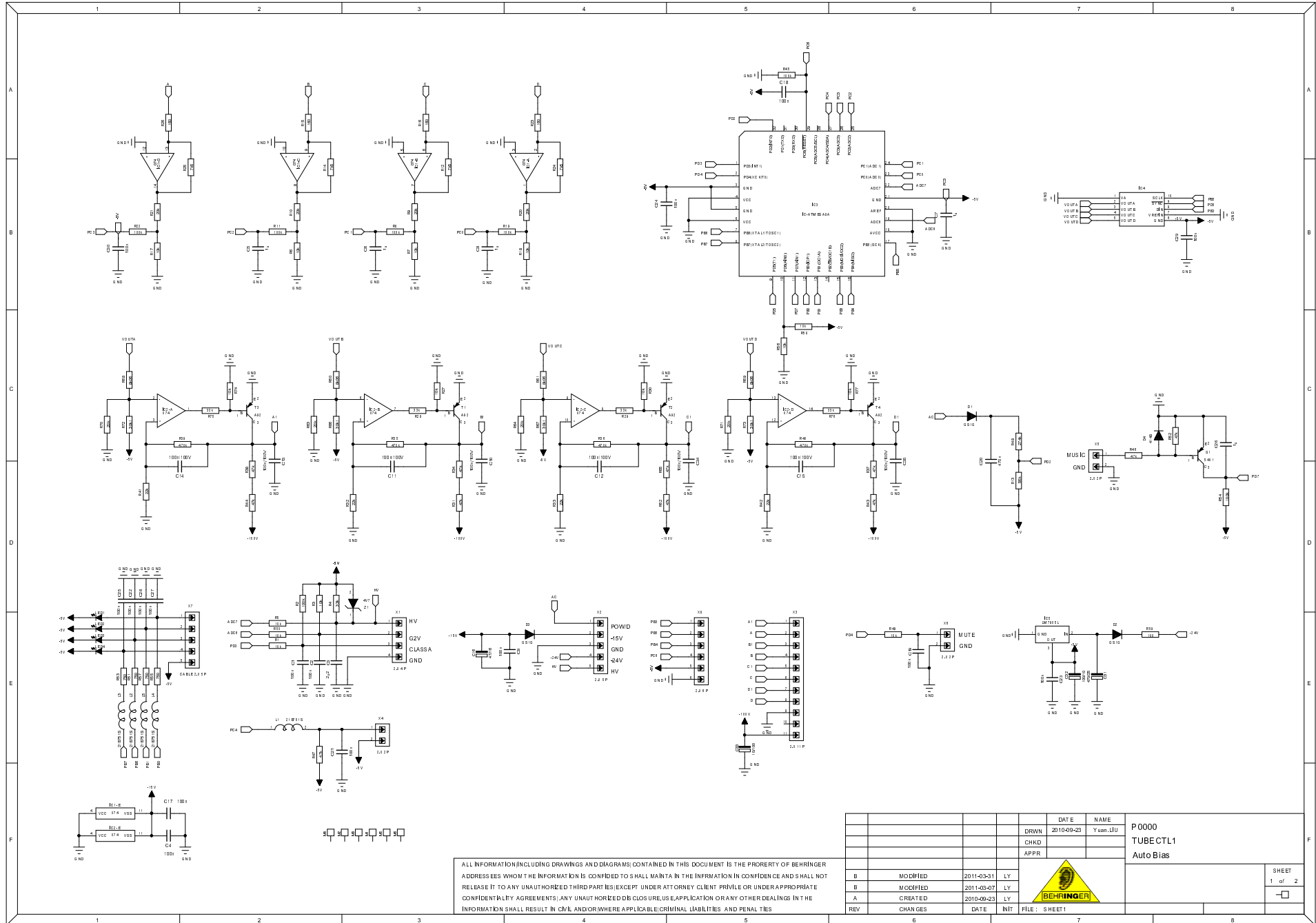


REVISIONS		B (10/06/11)	
DRAWN	RL	CHECKED	DATE 09.07.11 13:27

BUGERA


PROJECT
P00AJ
BUGERA
PREAMP / PSU
SHEET 1 OF 2 SHEETS TOTAL






ALL INFORMATION, INCLUDING DRAWINGS AND DIAGRAMS, CONTAINED IN THIS DOCUMENT IS THE PROPERTY OF BEHRINGER. ADDRESSES WHOM THE INFORMATION IS CONFIDED TO SHALL MAINTAIN THE INFORMATION IN CONFIDENCE AND SHALL NOT RELEASE IT TO ANY UNAUTHORIZED THIRD PARTIES (EXCEPT UNDER ATTORNEY CLIENT PRIVILEGE OR UNDER AN APPROPRIATE CONFIDENTIALITY AGREEMENT). ANY UNAUTHORIZED DISCLOSURE, USE, APPLICATION OR ANY OTHER DEALINGS IN THE INFORMATION SHALL RESULT IN CIVIL AND/OR WHERE APPLICABLE, CRIMINAL LIABILITIES AND PENAL TIES.

REV	CHANGES	DATE	INT	FILE	DATE	NAME	DRWN	CHKD	APPR
		2010-09-23		SHEET1		Yuan, LU			
B	MODIFIED	2011-03-31	LY						
B	MODIFIED	2011-03-07	LY						
A	CREATED	2010-09-23	LY						

P 0000	TUBE CTL1	Auto Bias
		
SHEET	1 of 2	

Pos Model	LED1-LED4 (E12-57630-00590)	X7 (G71-23105-04745)
P0AAC	Need	Not required
P0AAE	Need	Not required
P0AAF	Need	Not required
P0AAG	Need	Not required
P0AAH	Need	Not required
P0AAI	Need	Not required
P0AAJ	Need	Not required
P0AAK	Need	Not required
P0405	Need	Not required
P0AAB	Not required	Need
P0AAD	Not required	Need
P0404	Not required	Need

ALL INFORMATION, INCLUDING DRAWINGS AND DIAGRAMS, CONTAINED IN THIS DOCUMENT IS THE PROPERTY OF BEHRINGER ADDRESSSES WHOM THE INFORMATION IS CONFIDED TO SHALL MAINTAIN THE INFORMATION IN CONFIDENCE AND SHALL NOT RELEASE IT TO ANY UNAUTHORIZED THIRD PARTIES (EXCEPT UNDER ATTORNEY CLIENT PRIVILEGE OR UNDER APPROPRIATE CONFIDENTIALITY AGREEMENTS). ANY UNAUTHORIZED DISCLOSURE, USE, APPLICATION OR ANY OTHER DEALINGS IN THE INFORMATION SHALL RESULT IN CIVIL AND/OR WHERE APPLICABLE CRIMINAL LIABILITIES AND PENAL TIES

				DATE	NAME	P0000 TUBECTL1 Auto Bias
		DRWN		2010-09-23	Yuan, LU	
		CHKD				
		APPR				
B	MODIFIED		2011-03-31	LY		
B	MODIFIED		2011-03-07	LY		
A	CREATED		2010-09-23	LY		
REV	CHANGES		DATE	INT	FILE: S SHEET2	SHEET 2 of 2

Hi Pcb Assemblies

	Quantity	Unit	Item	Rev	Description	Reference Designators	Notes
1	1.0000	PC	A05-00000-62102		PCB ASSEMBLY;P0AAC;B;HI;TUBECTL1		
2	2.0000	PC	A05-AAJ01-00102		PCB ASSEMBLY;P0AAJ;1;B;FRONT;HI		
3	1.0000	PC	A05-AAJ02-00102		PCB ASSEMBLY;P0AAJ;2;B;MAIN/PRE;HI		
4	1.0000	PC	A05-AAJ03-00102		PCB ASSEMBLY;P0AAJ;3;B;POWER;HI		
5	1.0000	PC	A05-AAJ04-00102		PCB ASSEMBLY;P0AAJ;4;B;REAR;HI		
6	1.0000	PC	A05-67100-08411		PCB ASSEMBLY;PSU6;P0671;JP-UL;REV:E;HAND INSERT;NO.903040		(UL, JP, BR, HL, SH)
7	1.0000	PC	A05-67100-08410		PCB ASSEMBLY;PSU6;P0671;EU-UK-CCC-SAA;REV:E;HAND INSERT;NO.903040		(EU, UK, SAA, AR)

Cable

	Quantity	Unit	Item	Rev	Description	Reference Designators	Notes
1	2.2020	M	A77-00000-64601		CABLE;STRANDWIRE;AWG:26;UL2468;1.5 MM;UL;PIN1 RED;FLAT RIBBON WIRE,POLES;2,PITCH:1mm5,PVC, 80C 300V	[P0AAJ:02: {0.416}] [P0AAJ:04: {0.286}]	
2	0.3020	M	A77-00000-64603		CABLE;STRANDWIRE;AWG:26;UL2468;1.5 MM;UL;PIN1 RED;FLAT RIBBON WIRE,POLES;3,PITCH:1mm5,PVC, 80C 300V	[P0AAJ:02: {0.086}] [P0AAJ:02: {0.216}]	
3	0.4160	M	A77-00000-64607		CABLE;STRANDWIRE;AWG:26;UL2468;1.5 MM;UL;PIN1 RED;FLAT RIBBON WIRE,POLES;5,PITCH:1mm5,PVC, 80C 300V	[P0AAJ:02: {0.416}]	
4	0.2320	M	A77-00010-00601		WIRE;RAW CABLE;UL1007;AWG26;BK	[P0AAJ:02: {0.232}]	
5	0.2320	M	A77-00010-00605		WIRE;RAW CABLE;UL1007;AWG26;RD	[P0AAJ:02: {0.232}]	
6	0.9360	M	A77-00020-72201		RAW WIRE;HOOK-UP;JACKET:PVC;UL1015;CORES:1;600V;105 C;AWG:18;BLACK	[P0AAJ:02: {0.84}]	
7	0.1650	M	A77-00020-72203		RAW WIRE;HOOK-UP;JACKET:PVC;UL1015;CORES:1;600V;105 C;AWG:18;YELLOW	[P0AAJ:04: {0.165}]	
8	0.5440	M	A77-00020-72205		RAW WIRE;HOOK-UP;JACKET:PVC;UL1015;CORES:1;600V;105 C;AWG:18;RED	[P0AAJ:02: {0.328}] [P0AAJ:02: {0.12}]	
9	0.1850	M	A77-00020-72206		RAW WIRE;HOOK-UP;JACKET:PVC;UL1015;CORES:1;600V;105 C;AWG:18;BROWN	[P0AAJ:04: {0.185}]	
10	0.1140	M	A77-00020-72908		RAW WIRE;HOOK-UP;JACKET:PVC;UL1015;CORES:1;600V;105 C;AWG:16;GREEN/YELLOW		
11	0.3920	M	A77-00030-75204		RAW WIRE;HOOK-UP;DOUBLE INSULATED;JACKET:PVC;UL1672;CORES:1;300V;105 C;AWG:18;WHITE	[PSU6:00: {2x0.196}]	
12	0.3720	M	A77-00080-00602		WIRE;RAW CABLE;UL2547;2C+SP;AWG26;GRAY	[P0AAJ:02: {0.076}] [P0AAJ:02: {0.14}] [P0AAJ:02: {0.156}]	
13	0.5340	M	A77-00090-73602		RAW WIRE;SHIELDED;JACKET:PVC;UL1533;CORES:1;80 C;AWG:26;GREY;1C(WHITE)+SPIRAL SHIELD	[P0AAJ:02: {0.086}] [P0AAJ:02: {0.136}] [P0AAJ:02: {0.146}] [P0AAJ:02: {0.166}]	
14	1.0000	PC	A77-10027-20908		CABLE;STRANDWIRE;LENGTH:100mm;AWG:16;UL1015; S/T LENGTH:7mm;LUG 4mm3;COLOR:YELLOW/GREEN		WIRES
15	1.0000	PC	A77-10027-92908		CABLE;STRANDWIRE;LENGTH:100mm;ZEE;AWG:16;UL1 015;S/T LENGTH:7mm;LUG 4mm3;COLOR:YELLOW/GREEN		

	Quantity	Unit	Item	Rev	Description	Reference Designators	Notes
16	1.0000	PC	A77-14025-98203		CABLE;STRANDWIRE;LENGTH:140mm;ZEE;AWG:18;UL1015;S/T LENGTH:5mm;AMP-CON 6mm3 ISO;COLOR:YE	[P0AAJ:04: {1.0}(X3)]	
17	1.0000	PC	A77-16025-98206		CABLE;STRANDWIRE;LENGTH:160mm;ZEE;AWG:18;UL1015;S/T LENGTH:5mm;AMP-CON 6mm3 ISO;COLOR:BN	[P0AAJ:04: {1.0}(X1)]	
18	1.0000	PC	A77-31025-85205		CABLE;STRANDWIRE;LENGTH:310mm;ZEE;AWG:18;UL1015;LENGTH:5mm;AMP-CON 6mm3 ISO;ONE SIDE 5mm STRIP/TIN;COLOR:RD	[P0AAJ:02: {1.0}(X21)]	
19	1.0000	PC	A81-00000-04036		WIRE HARNESS;AWG:26;UL2468;2 MM;3;COMMON;70 MM;ALL BLACK PIN1 RED	[P0AAJ:02: {1.0}(X23)]	
20	1.0000	PC	A81-00000-26250		WIRE HARNESS;AWG:26;UL2468;2 MM;12;350 MM;PIN1 RED;ONE SIDE:A2006H-11P;OTHER SIDE:SPECIAL		
21	1.0000	PC	A81-00000-37679		WIRE HARNESS;AWG:26;UL2468;2 MM;7;400 MM;PIN1 RED;P1018-7P;A2006H-5P;A2006H-2P	[P0AAJ:02: {1.0}(X53)]	
22	1.0000	PC	A81-00000-37680		WIRE HARNESS;AWG:26;UL2468;2 MM;2;270 MM;PIN1 RED;A2006H,P1018	[P0AAJ:04: {1.0}(X58)]	
23	1.0000	PC	A81-00000-40694		WIRE HARNESS;AWG:26;UL1007;2 MM;3;ALL BLACK PIN1 RED;220 MM;NO PIN2	[P0AAJ:02: {1.0}(X52)]	
24	1.0000	PC	A81-06030-36802		WIRE HARNESS;LENGTH:60mm;ZEE;AWG:26;POLES:3;PIN 2 IS SHIELDED;HOUSING - BOARD IN CONNECTOR;P:2mm;PIN1 RED/OTHERS BLK	[P0AAJ:02: {1.0}(X28)]	
25	1.0000	PC	A81-07000-26840		WIRE HARNESS;LENGTH:70mm;ZEE;AWG:26;P:2mm;HOUSING -BOARD IN CONNECTOR;POLES:2;PIN1 RED/OTHERS BLK;PIN 2 IS SHIELDED	[P0AAJ:02: {1.0}(X26)]	
26	1.0000	PC	A81-08030-32022		CABLE;LENGTH:80mm;POLES:3;AWG:18;UL1015;ONE SIDE 7mm STRIP/TINNED;PIN 2 HAS NO CONNECTION;SPECIAL		WIRES & CABLES
27	1.0000	PC	A81-08030-32822		WIRE HARNESS;LENGTH:80mm;ZEE;POLES:3;AWG:18;UL1015;ONE SIDE 7mm STRIP/TINNED;PIN 2 HAS NO CONNECTION;SPECIAL	X34]	
28	1.0000	PC	A81-10031-02842		WIRE HARNESS;LENGTH:100mm;ZEE;AWG:18;UL1015;P:2mm;PIN 7 & PIN 8 have no connection;HOUSING - BOARD IN CONNECTOR;POLES:10;PIN1 RED/OTHERS BLK	[P0AAJ:02: {1.0}(X18)]	
29	1.0000	PC	A81-12030-36800		WIRE HARNESS;LENGTH:120mm;ZEE;AWG:26;Poles:3;HOUSING - BOARD IN CONNECTOR;P:2mm;PIN 3 IS SHIELDED; PIN 2 HAVE NO CONNECTION;PIN1 RD/OTHERS BK;SHIELDED_01	[P0AAJ:02: {1.0}(X25)]	
30	1.0000	PC	A81-12130-36842		WIRE HARNESS;LENGTH:120mm;ZEE;AWG:26;HOUSING - BOARD IN CONNECTOR;POLES:3;P:2mm;PIN 2 IS SHIELDED;PIN1 RD/OTHERS BK	[P0AAJ:02: {1.0}(X19)]	
31	1.0000	PC	A81-13030-26840		WIRE HARNESS;LENGTH:130mm;ZEE;AWG:26;P:2mm;HOUSING-BOARD IN CONNECTOR;POLES:2;PIN1 RED/OTHERS BLK;PIN 2 IS SHIELDED	[P0AAJ:02: {1.0}(X32)]	

	Quantity	Unit	Item	Rev	Description	Reference Designators	Notes
32	1.0000	PC	A81-14030-36800		WIRE HARNESS;LENGTH:140mm;ZEE;AWG:26;P:2mm;PIN 2 IS SHIELDED;HOUSING - BOARD IN CONNECTOR;POLES:3;PIN1 RD/OTHERS BK;SHIELDED	[P0AAJ:02: {1.0}(X31)]	
33	1.0000	PC	A81-15030-26840		WIRE HARNESS;LENGTH:150mm;ZEE;AWG:26;P:2mm;HOUSIN G-BOARD IN CONNECTOR;POLES:2;PIN1 RED/OTHERS BLK;PIN 2 IS SHIELDED	[P0AAJ:02: {1.0}(X29)]	
34	1.0000	PC	A81-20030-36802		WIRE HARNESS;LENGTH:200mm;ZEE;AWG:26;UL2468;P:2mm 0;HOUSING-BOARD IN CONNECTOR;POLES:3;PIN1 RED/OTHERS BLK	[P0AAJ:02: {1.0}(X24)]	
35	1.0000	PC	A76-15042-05624		CABLE;AC-CORD;W/POLYBAG;LENGTH:150cm;H05VV- F3G0.75MM2;VERSION;UK;SPEC.NO:05624		(UK)
36	2.0000	PC	A77-18037-91204		CABLE;STRANDWIRE;LENGTH:180mm;ZEE;AWG:18;UL1 672;S/T LENGTH:7mm;STRIPPED AND TINNED;COLOR:WHITE	[PSU6:00: {2.0}]	(EU, UL, JP, UK, SAA, BR, AR, HL, SH)
37	1.0000	PC	A76-15222-06417		CABLE;AC- CORD;W/POLYBAG;LENGTH:152cm;AWG:18;VERSION;U L;SPEC.NO:06417		(UL)
38	1.0000	PC	A76-18050-47490		CABLE;AC- CORD;LENGTH:180cm;VERSION:SAA;PLUG:HE105 ISOLATED;SAA H05VV-F 3x0.75mm2;CONN.HP- 3;SPEC.NO:47490		(SAA)
39	1.0000	PC	A76-00000-05305		CABLE;AC-CORD;3;BR;1500 MM;Plug + Connector:375+730;H05VV-F 3G0.75		(BR)
40	1.0000	PC	A76-00000-13573		CABLE;AC-CORD;3;AR;1500 MM;Plug + Connector:321+730;H05VV-F 3G0.75		(AR)
41	1.0000	PC	A76-15212-03119		CABLE;AC-CORD;W/POLYBAG;LENGTH:152cm;H05VV-F 3G 0.75MM2;VERSION;EU;SPEC.NO:03119		(EU)
42	2.0000	PC	A77-18037-91204		CABLE;STRANDWIRE;LENGTH:180mm;ZEE;AWG:18;UL1 672;S/T LENGTH:7mm;STRIPPED AND TINNED;COLOR:WHITE	[PSU6:00: {2.0}(X2-X3)]	
43	1.0000	PC	A76-15032-55649		CABLE;AC-CORD;CLASS II;W/POLYBAG;JAPAN;LENGTH:150cm;POLES:3;APPROV AL:PSE;JS1553 + VCTF 3x0.75mm2 + V1528		(JP, HL, SH)

Circuit Protector

	Quantity	Unit	Item	Rev	Description	Reference Designators	Notes
1	8.0000	PC	B21-15201-52000		FUSE CLIP;2 A;V;ZINC PLATING;250V;SERIES;520;FUSE;250 V;PLATING	[P0AAJ:02: {8.0}{F5-F12}]	
2	3.0000	PC	B22-01513-10001		FUSE;1A0;250V;SLOW BLOW;H-TYPE;5mm x 20mm	[P0AAJ:02: {3.0}{F2-F4}]	
3	1.0000	PC	B22-01514-10001		FUSE;10A;250V;SLOW BLOW;H-TYPE;5mm x 20mm	[P0AAJ:02: {1.0}{F1}]	
4	1.0000	PC	B22-01513-20001		FUSE;2A0;250V;SLOW BLOW;H-TYPE;5mm x 20mm		(EU, UK, SAA, AR)
5	1.0000	PC	B22-01514-00001		FUSE;4A;250V;SLOW BLOW;H-TYPE;5mm x 20mm		(UL, JP, BR, HL, SH)

Coil

	Quantity	Unit	Item	Rev	Description	Reference Designators	Notes
1	5.0000	PC	B39-00000-03394		COIL;SMD;BEAD;SMD0805;(BLM21BD751SN1D)	[P0AAC:00: {5.0}{L1-L5}]	

Connector

	Quantity	Unit	Item	Rev	Description	Reference Designators	Notes
1	16.0000	PC	B84-19056-06015		CONNECTOR;TERMINAL;BRASS W TIN;AWG16-22;JS-4008-T	[P0AAJ:02: {16.0}]	
2	2.0000	PC	B84-22000-06018		CRIMP TERMINAL;PITCH:3mm96;AWG18-22;A3963TOP-2		
3	54.0000	PC	B84-25016-06014		CRIMP TERMINAL;PITCH:2mm0;AWG24-30;A2008TOP-2	[P0AAJ:02: {3.0}] [P0AAJ:02: {3.0}] [P0AAJ:02: {2.0}] [P0AAJ:02: {2.0}] [P0AAJ:02: {3.0}] [P0AAJ:02: {2.0}] [P0AAJ:02: {3.0}] [P0AAJ:02: {2.0}] [P0AAJ:02: {3.0}] [P0AAJ:02: {7.0}] [P0AAJ:02: {2.0}] [P0AAJ:04: {2.0}]	
4	3.0000	PC	B84-30060-06009		JACKET;FOR 6mm35 AMP CONNECTOR;PVC;STRAIGHT;DIAMETER:4mm	[P0AAJ:02: {1.0}] [P0AAJ:04: {1.0}] [P0AAJ:04: {1.0}]	
5	3.0000	PC	B84-32050-05839		CRIMP CONNECTOR;AMP;RECEPTABLE;6mm3 x 7mm5;AWG 14-18;WIRE MOUNT;STRAIGHT;250 SERIES	[P0AAJ:02: {1.0}] [P0AAJ:04: {1.0}] [P0AAJ:04: {1.0}]	
6	3.0000	PC	B84-39000-03120		CONNECTOR;AMP;PCB;PCB MOUNT;PITCH:5mm;WIDTH:6mm3	[P0AAJ:02: {2.0}(X30, X33)] [P0AAJ:03: {1.0}(X16)]	
7	1.0000	PC	B84-42050-00155		CRIMP CONNECTOR;LUG;INNER DIA:4mm3;AWG 14-18;WIRE MOUNT;STRAIGHT		

Diode

	Quantity	Unit	Item	Rev	Description	Reference Designators	Notes
1	3.0000	PC	C11-02014-14843		DIODE;1N4148;DO35	[P0AAJ:01: {3.0}(D15-D17)]	
2	10.0000	PC	C11-03014-00700		DIODE;1N4007;DO41	[P0AAJ:02: {9.0}(D6-D13, D21)] [P0AAJ:03: {1.0}(D3)]	
3	3.0000	PC	C11-09014-14802		DIODE;LL4148;LL34;TEMIC OR FC	[P0AAJ:04: {2.0}(D1-D2)] [P0AAC:00: {1.0}(D4)]	
4	3.0000	PC	C11-20370-00124		DIODE;GP;GS1G;400V;1A;DO-214AC;SMD	[P0AAC:00: {3.0}(D1-D3)]	
5	2.0000	PC	C12-03300-15043		DIODE;ZD15V0;BZX85C15;DO41	[P0AAJ:04: {2.0}(D4-D5)]	
6	1.0000	PC	C12-14200-04703		DIODE;ZMM04V7;SMD1206;SMD	[P0AAC:00: {1.0}(Z1)]	
7	4.0000	PC	C13-08010-00080		DIODE;1N5408;DO201AD;TAPING	[P0AAJ:03: {4.0}(D14, D18-D20)]	

Hardware

	Quantity	Unit	Item	Rev	Description	Reference Designators	Notes
1	80.0000	PC	F80-11025-33087		NAIL;CROWN:2mm2;WIDTH:1mm27;THICKNESS:1mm0; LENGHT:25mm;18-GAUGE (0.49*0.40) FINISH;GALVANIZED		
2	50.0000	PC	F80-12010-33088		NAIL;STAPLE;CROWN 10mm;LEGLNGTH:10mm;WIDTH:1.2mm;THICKNESS:0 mm6;FINISH;GALVANIZED		
3	10.0000	PC	F83-04000-00021		CABLE TIE;NYLON;4in;COLOR:		
4	1.0000	PC	F83-10044-05631		WIRECLAMP;LUG:4mm4;LENGTH:56mm;OUTER DIA;8mm;PLASTIC COVERED STEEL;COLOR:BLK		
5	1.0500	G	F84-03000-01090		SCREWLOCK;SPEC.NO:01090	[POAAC:00: {0.05}]	
6	2.0000	PC	F85-00000-09365		NUT;M;3 MM;3.2 MM;HEX WASHER;7.3 MM;ZINC;BLUE;HEXAGON REC.;0.5 MM;M3*0.5mm NUT WITH TEETH EXTERNAL WASHER		
7	2.0000	PC	F85-00000-13186		HEX.NUT;12 MM;2 MM;NICKEL;SILVER;0.75 MM		
8	1.0000	PC	F85-03000-44001		HEX.NUT;INNER DIA;M3mm;SURFACE:ZINC	[POAAC:00: {1.0}]	
9	11.0000	PC	F85-04000-21007		T-NUT;INNER DIA;M4mm;W/PRONG;SURFACE:ZINC/BLACK		
10	11.0000	PC	F85-04000-44001		HEX. NUT;INNER DIA;M4mm;SURFACE:ZINC		TRAFO AND WIRE LUG FIXING
11	8.0000	PC	F85-05008-21007		T-NUT;INNER DIA;M5mm;THICK:8mmW/PRONG;SURFACE:ZINC;COLO R:BLACK		RUBBER FEET AND HANDLE FIXNG
12	7.0000	PC	F85-09020-44755		HEX. NUT;THREAD:9mm;THICKNESS:2mm;PITCH:0mm75;SUR FACE:NICKEL;(PHONE JACK)		VR AND PHONE JACK FIXING
13	8.0000	PC	F85-09535-45795		OCT. NUT;FOR JACK;3/8in;OCTWRENCH:14.5mm;THICKNESS:3.5mm;SU RFACE:NICKEL/SILVER		
14	1.0000	PC	F85-13000-44001		HEX. NUT;INNER DIA:13mm;SURFACE:ZINC		LED ACRYLIC FIXING
15	5.0000	PC	F87-00200-10103		RUBBER BUSHING;I00172P;DST.NO:002;DPT.NO:10103;(I00172P- RUBBER_BUSHING-REVB.dwf)		CABLE GROMMET
16	8.0000	PC	F88-30034-10297		SCREW;M3mm*3mm;HEAD:PAN WASHER DIA 4mm5;INSERT:PHILIPS REC.;SURFACE:BLACK/ZINC		VALVE SHIELD FIXING
17	16.0000	PC	F88-30060-30291		SCREW;M3mm*6mm;HEAD:PAN;INSERT:PHILIPS REC.;SURFACE:SILVER/ZINC		
18	1.0000	PC	F88-30080-30291		SCREW;M3mm*8mm;HEAD:PAN;INSERT:PHILIPS REC.;SURFACE:ZINC	[POAAC:00: {1.0}]	
19	2.0000	PC	F88-30100-30297		SCREW;M3mm*10mm;HEAD:PAN;INSERT:PHILIPS REC.;SURFACE:BLACK/ZINC		
20	4.0000	PC	F88-30120-30247		SCREW;BT3mm*12mm;HEAD:PAN;INSERT:PHILIPS REC.;SURFACE:BLACK/ZINC		

	Quantity	Unit	Item	Rev	Description	Reference Designators	Notes
21	4.0000	PC	F88-30130-50217		SCREW;A3mm*13mm;HEAD:FLAT;INSERT:PHILIPS REC.;SURFACE:BLACK/ZINC		
22	1.0000	PC	F88-40100-20291		SCREW;M4mm*10mm;HEAD:BINDING;INSERT:PHILIPS REC.;SURFACE:SILVER/ZINC		TRAFO AND WIRE LUG FIXING
23	10.0000	PC	F88-40120-20291		SCREW;M4mm*12mm;HEAD:BINDING;INSERT:PHILIPS REC.;SURFACE:SILVER/ZINC		TRAFO FIXING
24	4.0000	PC	F88-40211-10297		SCREW;M4mm*21mm;HEAD:PAN WASHER DIA 9mm;INSERT:PHILIPS REC.;SURFACE:BLACK/ZINC		GRILL FIXING
25	7.0000	PC	F88-40280-40297		SCREW;M4mm*28mm;HEAD:TRUSS;INSERT:PHILIPS REC.;SURFACE:BLACK/ZINC		
26	2.0000	PC	F88-40300-60297		SCREW;M4mm*30mm;HEAD:OVAL;INSERT:PHILIPS REC.;SURFACE:BLACK/ZINC		USER UNIT ASSY FIXING
27	4.0000	PC	F88-40330-60297		SCREW;M4mm*33mm;HEAD:OVAL;INSERT:PHILIPS REC.;SURFACE:BLACK/ZINC		USER UNIT ASSY FIXING
28	4.0000	PC	F88-50220-60293		SCREW;M5mm*22mm;HEAD:OVAL;INSERT:PHILIPS REC.;SURFACE:SILVER/CHROME		HANDLE FIXING
29	4.0000	PC	F88-50230-30297		SCREW;M5mm*23mm;HEAD:PAN;INSERT:PHILIPS REC.;SURFACE:BLACK/ZINC		RUBBER FEET FIXING
30	1.0000	PC	F90-00100-08985		METAL;SHIELD;I00306P;DST.NO:001;DPT.NO:08985;(I00306P-SHIELD-REVA.DWG)		
31	1.0000	PC	F90-00100-13863		METAL;SHIELD;P0671;DST.NO:001;DPT.NO:13863;(P0671-SHIELD-REVA.dwg)		
32	1.0000	PC	F90-00100-14433		METAL SHIELD;P0671;BIG_SHIELD;DST.NO:001;DPT.NO:14433;(P0671-BIG_SHIELD-REVA.DWG)		
33	1.0000	PC	F91-02030-05793		SILICA GEL;MASS;30g;SPEC.NO:30QB-BB2001-4		
34	4.0000	PC	F91-03020-01251		CLIP-ON NUT;SQUARE STYLE;FOR M4 NUTS;PANEL THICKNESS:0mm4 TO 0mm6;SURFACE:ZINC/SILVER;(LAN-XIN LXJ12A)		
35	0.3240	M	F95-01000-43217		SHRINKING TUBE;INNER DIA;1mm;SPEC.NO:43217	[P0AAJ:02: {0.024}] [P0AAJ:02: {0.05}] [P0AAJ:02: {0.05}] [P0AAJ:02: {0.05}] [P0AAJ:02: {0.05}] [P0AAJ:02: {0.05}] [P0AAJ:02: {0.05}]	

	Quantity	Unit	Item	Rev	Description	Reference Designators	Notes
36	120.0000	MM	F95-02000-15747		SHRINKING TUBE;INNER DIA;2MM;SPEC NO:15747	[P0AAJ:02: {24.0}] [P0AAJ:02: {32.0}] [P0AAJ:02: {32.0}] [P0AAJ:02: {32.0}]	
37	0.1100	M	F95-03000-01097		SHRINKING TUBE;INNER DIA;3mm;SPEC.NO:01097	[P0AAJ:02: {0.05}] [P0AAJ:02: {0.03}] [P0AAJ:02: {0.03}]	
38	0.0750	M	F95-04000-01098		SHRINKING TUBE;INNER DIA;4mm;SPEC.NO:01098		
39	0.0500	M	F95-05200-16898		SHRINKING TUBE;INNER DIA:5mm2;SPEC.NO:16898;		
40	8.0000	PC	F96-00000-00836		WASHER;9.7 MM;16 MM;NICKEL;WHITE;WASHER;FLAT;DIM:9.7*16*0.5mm;NI C		
41	1.0000	PC	F96-10300-60050		WASHER;PLAIN;INNER DIA:3mm;OUTER DIA:6mm;THICKNESS;0mm5	[P0AAC:00: {1.0}]	
42	3.0000	PC	F96-10300-80105		WASHER;PLAIN;INNER DIA:3mm;OUTER DIA:8mm;THICKNESS;1mm;PLATING;NICKEL		
43	15.0000	PC	F96-10400-80105		WASHER;PLAIN;INNER DIA:4mm;OUTER DIA:8mm;THICKNESS:1mm;PLATING;NICKEL		TRAFIX FIXING
44	7.0000	PC	F96-10961-30505		WASHER;PLAIN;INNER DIA:9mm6;OUTER DIA:13mm;THICKNESS;0mm5;PLATING:NICKEL		VR AND PHONE JACK FIXING
45	4.0000	PC	F96-11231-66055		WASHER;PLAIN;INNER DIA:12mm3;OUTER DIA:16mm6;THICKNESS:0mm5;SURFACE:NICKEL/SILVER		TOGGLE SWITCH FIXING
46	10.0000	PC	F96-20400-70170		WASHER;SPRING;INNER DIA:4mm;OUTER DIA:7mm;THICKNESS;1mm7		
47	1.0000	PC	F96-21451-70155		WASHER;SPRING;INNER DIA:14mm5;OUTER DIA:17mm;THICKNESS:1mm5;PLATING:NICKEL		LED ACRYLIC FIXING
48	1.0000	PC	F96-40300-60053		WASHER;EXTERNAL TEETH;INNER DIA:3mm;OUTER DIA:6mm;THICKNESS:0mm5;PLATING:CR(III)	[P0AAC:00: {1.0}]	
49	12.0000	PC	F96-40400-70170		WASHER;EXTERNAL TEETH;INNER DIA:4mm;OUTER DIA:7mm;THICKNESS;1mm7		TRAFIX AND WIRE LUG FIXING
50	6.0000	PC	F96-50551-60267		WASHER;DONUT;INNER DIA:5mm5;OUTER DIA:16mm;THICKNESS;2mm6;PLATING;BLACK/ZINC		USER UNIT ASSY FIXING
51	2.0000	PC	F97-00000-02957		CARTON SHEET;PAPERBOARD A;P0404		
52	2.0000	PC	F97-00200-14815		PAPERBOARD B;P0738;DST.NO:002;DPT.NO:14815;(P0738-PAPERBOARD_B-REVB.DWG)		
53	13.0000	PC	F88-30060-30297		SCREW;M3mm*6mm;HEAD:PAN;INSERT:PHILLIPS REC.;SURFACE:BLACK/ZINC		(EU, UL, JP, UK, SAA, BR, AR, HL, SH)
54	13.0000	PC	F88-30060-30297		SCREW;M3mm*6mm;HEAD:PAN;INSERT:PHILLIPS REC.;SURFACE:BLACK/ZINC		PCB FIXING

Ic

	Quantity	Unit	Item	Rev	Description	Reference Designators	Notes
1	1.0000	PC	C60-00000-33663		IC;AD/DA;MSOP;DAC084S085	[P0AAC:00: {1.0}(IC4)]	
2	2.0000	PC	C73-31007-40514		IC;OPAMP OPAMP;TL074;SOP;BRAND:ST ONLY	[P0AAC:00: {2.0}(IC1-IC2)]	
3	1.0000	PC	C73-58007-22208		IC;OPAMP OPAMP;TL072;SOP;BRAND:ST ONLY	[P0AAJ:04: {1.0}(IC1)]	
4	1.0000	PC	C77-00000-28276		IC;VOLT.REGULATOR;TO220;LM7905L	[P0AAC:00: {1.0}(IC5)]	
5	1.0000	PC	C77-15208-03005		IC;VOLT.REGULATOR;79L15;TO92;PITCH:2.54MM	[P0AAJ:02: {1.0}(IC2)]	
6	1.0000	PC	D24-18081-61832		IC;MICROCONTROLLER;ATMEGA8A-AU;SMD;TQFP32	[P0AAC:00: {1.0}(IC3)]	

Led

	Quantity	Unit	Item	Rev	Description	Reference Designators	Notes
1	1.0000	PC	E10-00000-05233		LED HIB;5mm0 ROUND;AMBER;BULK;NORMAL BRIGHT	[P0AAJ:01: {1.0}(LD1)]	
2	4.0000	PC	E12-57630-00590		LED;3mm ROUND;RD	[P0AAC:00: {4.0}(LED1-LED4)]	

Manual

	Quantity	Unit	Item	Rev	Description	Reference Designators	Notes
1	1.0000	PC	A56-00000-69282		SERVICE INFORMATION SHEET;P0000;EN;REV:003		
2	1.0000	PC	A52-00000-40142		WARRANTY CARD;P0000;JA;DATE:01.07.2011;REVD		(JP, HL, SH)
3	1.0000	PC	A54-00000-41065		QUICK START GUIDE;P0AAJ;JA;QSG;REV:001		(JP, HL, SH)
4	1.0000	PC	A52-00000-42338		WARRANTY CARD;P0000;EN;REV:001		(AR)
5	1.0000	PC	A54-00000-41063		QUICK START GUIDE;P0AAJ;WW;QSG;REV:001		(EU, UL, UK, SAA, BR, AR)

Metal Part

	Quantity	Unit	Item	Rev	Description	Reference Designators	Notes
1	1.0000	PC	A62-00200-08056		METAL;TOP GRILL;I00133P;DST.NO:002;DPT.NO:08056;(I00133P- TOP_GRILL-REVB.dwf)		
2	1.0000	PC	A65-00300-13937		METAL;REAR GRILL;I00281P;DST.NO:003;DPT.NO:13937;(I00281P- REAR_GRILL-REVC.DWG)		
3	1.0000	PC	J02-00000-24087		METAL;P0AAJ;CABINET;B002		
4	1.0000	PC	J05-00000-12245		METAL;P0AAJ;ZINC ALLOY;LOGO;CASTING;NATURAL;SPRAYING;CHAMPAG NE;P0AAJ CHAMPAGNE BRITISH BITE LOGO		
5	1.0000	PC	J05-00000-24088		METAL;P0AAJ;ALU PANEL;A004		ALUMINUM SHEET

Packaging Part

	Quantity	Unit	Item	Rev	Description	Reference Designators	Notes
1	1.0000	PC	G28-00000-68167		PE BAG;P0000;P0806-PO_BAG;SIZE:25inx42in;W/ WARNING		
2	1.0000	PC	G28-20090-14010		PE BAG;SIZE:9in*14in;W/WARNING		
3	4.0000	PC	G33-00000-29947		EXPANDED PE;P0AAB;BOTTOM;P0AAB-EPE_BOTTOM		
4	1.0000	PC	I40-00000-21676		MASTER CARTON;P0AAJ;MACA; A001		

Plastic Part

	Quantity	Unit	Item	Rev	Description	Reference Designators	Notes
1	4.0000	PC	G51-00100-14745		PLASTIC;RUBFOOT;P0738;DST.NO:001;DPT.NO:14745;(P0738-RUBFOOT-REVA.DWG)		RUBBER FEET
2	6.0000	PC	G52-00100-15596		PLASTIC;I00528P;ROTARY_KNOB;BLACK;DST.NO:001;DPT.NO:15596;(I00528P-ROTARY_KNOB-REVA.idw)		POTKNOB
3	3.0000	PC	G52-00400-08852		KNOB;SWITCH 1;I00040P;BLACK;MINI-SERIES;DST.NO:004;DPT.NO:08852;(I00040P-SWITCH_BUTTON1-REVD.dwf)		SWITCH BUTTON
4	1.0000	PC	G53-00000-04668		PLASTIC;JEWEL;P0404;AMBER TRANSLUCENT		LED ACRYLIC
5	2.0000	PC	G53-26000-22762		FUSE HOLDER;TYPE:FH-B13HA;250V/10A;SPEC:22762	[PSU6:00: {2x1.0}]{F1}]	
6	1.0000	PC	G53-40900-05211		LEATHER;HANDLE;P0738;BLACK LEATHER+SILVER METAL		
7	4.0000	PC	G58-00000-12235		PLASTIC;P0AAJ;PVC HDPE;PIPE;EXTRUSION;TRANSPARENT;P0AAJ GOLDEN PIPING01		PIPE
8	1.0000	PC	G58-00000-12238		PLASTIC;P0AAJ;PVC HDPE;STRIP;EXTRUSION;TRANSPARENT;P0AAJ GOLDEN PIPING02		
9	1.0000	PC	G58-00000-12239		PLASTIC;P0AAJ;PVC HDPE;FRONT;EXTRUSION;TRANSPARENT;P0AAJ GOLDEN PIPING03		
10	1.0000	PC	G58-00100-12649		PLASTIC;SPACER LED;I00454P;DST.NO:001;DPT.NO:12649;(I00454P-SPACER_LED-REVA.DWG)	[P0AAJ:01: {1.0}]	
11	1.0000	PC	G58-00100-14444		PLASTIC;PC SHEET;I00498P;DST.NO:001;DPT.NO:14444;(I00498P-PC_SHEET-REVA)		
12	1.0000	PC	G58-00200-01736		PLASTIC;GUM;RUBBER;MOULDING;BLACK;PROTGUM02;DPA400;DST.NO:002;DPT.NO:01736;(DPA400-PROT_GUM02-REVB.DWG)		
13	1.0000	PC	G58-00200-09291		PLASTIC;BUGERA LOGO;I00315P;BLACK CHROME;DST.NO:002;DPT.NO:09291;(I00315P-BUGERA_LOGO-REVB.DWG)		
14	2.0000	PC	G58-00300-12504		PLASTIC;HANDLE_GRILL;I00169P;DST.NO:003;DPT.NO:12504;(I00169P-HANDLE_GRILL-REVC.DWG)		
15	3.0000	PC	G58-00400-07922		PLASTIC;GUIDE;P0370;ABS PA757;BLACK;DST.NO:004;DPT.NO:7922;(BXL450A-SWITCH_GUIDE-REVD.DWG)		SWITCH GUIDE
16	4.0000	PC	G58-00400-11804		PLASTIC;LED SPACER;P0107;MOULDING;BLACK;PC-385;DST.NO:004;DPT.NO:11804;(VAMP-LED-SPACER-REVD.DWG)	[P0AAC:00: {4.0}]	
17	1.0000	PC	I62-00000-08480		PLASTIC;P0AAK;ABS PA757;KNOB;MOULDING;GLOSS HIGH;BLACK;WHITE		

Plug Socket

	Quantity	Unit	Item	Rev	Description	Reference Designators	Notes
1	4.0000	PC	G64-01211-03174		PLUG;JACK STEREO 6mm3;STRAIGHT SOLDER;W/O MET.RNG.;MET.BUSH.;NO NUT/WASHER;(JY-6351G-02-250)	[P0AAJ:01: {4.0}(X7-X10)]	
2	2.0000	PC	G64-14152-03710		PLUG;PCB;PLUG;JACK PHONE;STRAIGHTPCB LUGS;MONO 6mm3;DUAL TIP/NO RING CONTACTS;NO NUT/WASHER;METAL BUSHING;(CHUNSHENG PJ-622HA-EP)	[P0AAJ:04: {2.0}(X11-X12)]	
3	2.0000	PC	G64-16212-00005		PLUG;PCB;PLUG;JACK STEREO 6mm3;STRAIGHTPCB LUGS;NO NUT/WASHER;METAL BUSHING;(CHUNSHENG PJ-632HA)	[P0AAJ:04: {2.0}(X13-X14)]	CUTOFF: IDENTIFIED FROM X-JACKRADIAL/CS/01/*
4	2.0000	PC	G67-30103-01969		SOCKET;AC;PCB MOUNT;COLOR:BLACK;POLES:03;(SS-7B-1-T7NUT2)	[PSU6:00: {2x1.0}(X1)]	
5	10.0000	PC	G71-23102-04756		WAFER;POLES:2;STRAIGHT;PITCH:2 mm;1 ROW;TYPE:A2006WV-2P	[P0AAJ:01: {3.0}(X40-X41, X43)] [P0AAJ:03: {4.0}(X54-X57)] [P0AAC:00: {3.0}(X4-X6)]	
6	5.0000	PC	G71-23103-04757		WAFER;POLES:3;STRAIGHT;PITCH:2 mm;1 ROW;TYPE:A2006WV-3P	[P0AAJ:01: {3.0}(X37, X39, X44)] [P0AAJ:04: {2.0}(X4-X5)]	
7	3.0000	PC	G71-23103-04986		WAFER;POLES:3;STRAIGHT;PITCH:2 mm;1 ROW;A2006WV-03-S1;NO MIDDLE PIN	[P0AAJ:01: {1.0}(X42)] [P0AAJ:03: {1.0}(X6)] [P0AAJ:04: {1.0}(X2)]	
8	1.0000	PC	G71-23104-04758		WAFER;POLES:4;STRAIGHT;PITCH:2 mm;1 ROW;TYPE:A2006WV-4P	[P0AAC:00: {1.0}(X1)]	
9	1.0000	PC	G71-23105-04745		WAFER;POLES:5;STRAIGHT;PITCH:2 mm;1 ROW;TYPE:A2006WV-5P	[P0AAC:00: {1.0}(X2)]	
10	1.0000	PC	G71-23106-04965		WAFER;POLES:6;STRAIGHT;PITCH:2 mm;1 ROW;TYPE:A2006WV-6P	[P0AAC:00: {1.0}(X8)]	
11	1.0000	PC	G71-23111-04750		WAFER;POLES:11;STRAIGHT;PITCH:2 mm;1 ROW;TYPE:A2006WV-11P	[P0AAC:00: {1.0}(X3)]	
12	3.0000	PC	G71-27102-04450		WAFER;POLES:2;STRAIGHT;PITCH:3.96 mm;1 ROW;JS1120-03-S1;NO MIDDLE PIN	[PSU6:00: {2x1.0}(X4)] [P0AAJ:02: {1.0}(X34)]	
13	1.0000	PC	G71-27102-04759		WAFER;POLES:2;STRAIGHT;PITCH:3.96 mm;1 ROW;JS1120-02	[P0AAJ:02: {1.0}(X22)]	
14	1.0000	PC	G71-27105-04760		WAFER;POLES:5;STRAIGHT;PITCH:3.96 mm;1 ROW;JS1120-05-S1;W/O PIN2 AND PIN4	[P0AAJ:02: {1.0}(X27)]	
15	1.0000	PC	G71-27107-04763		WAFER;POLES:7;STRAIGHT;PITCH:3.96 mm;1 ROW;JS1120-07	[P0AAJ:02: {1.0}(X20)]	

	Quantity	Unit	Item	Rev	Description	Reference Designators	Notes
16	9.0000	PC	G71-43102-05994		PLUG;HOUSING;POLES:2;ROWS:1;STRAIGHT;PITCH:2mm;TYP:A2008	[P0AAJ:02: {1.0}] [P0AAJ:02: {1.0}] [P0AAJ:02: {1.0}] [P0AAJ:02: {1.0}] [P0AAJ:04: {1.0}]	
17	8.0000	PC	G71-43103-05995		PLUG;HOUSING;POLES:3;ROWS:1;STRAIGHT;PITCH:2mm;TYP:A2008	[P0AAJ:02: {1.0}] [P0AAJ:02: {1.0}] [P0AAJ:02: {1.0}] [P0AAJ:02: {1.0}] [P0AAJ:02: {1.0}] [P0AAJ:02: {1.0}] [P0AAJ:02: {1.0}]	
18	1.0000	PC	G71-43105-05997		PLUG;HOUSING;POLES:5;ROWS:1;STRAIGHT;PITCH:2mm;TYP:A2008	[P0AAJ:02: {1.0}]	
19	1.0000	PC	G71-43111-06003		PLUG;HOUSING;POLES:11;ROWS:1;STRAIGHT;PITCH:2mm;TYP:A2008		
20	1.0000	PC	G71-47103-05845		PLUG;HOUSING;A3963H02;PITCH:3mm96;POLES:3;ROWS:1;UL94-V0;STRAIGHT		
21	2.0000	PC	G71-47110-01424		PLUG;HOUSING;PLUG;POLES:10;ROWS:1;STRAIGHT;PITCH:3mm96;TYP:JS4008	[P0AAJ:02: {2.0}]	
22	34.0000	PC	G71-80000-05663		BD.-IN-CONN;TERMINAL;SAN-002T-0.8A	[P0AAJ:02: {3.0}] [P0AAJ:02: {3.0}] [P0AAJ:02: {2.0}] [P0AAJ:02: {2.0}] [P0AAJ:02: {3.0}] [P0AAJ:02: {2.0}] [P0AAJ:02: {3.0}] [P0AAJ:02: {2.0}] [P0AAJ:02: {3.0}] [P0AAJ:02: {7.0}] [P0AAJ:02: {2.0}] [P0AAJ:04: {2.0}]	

	Quantity	Unit	Item	Rev	Description	Reference Designators	Notes
23	4.0000	PC	G71-83102-05642		BOARD-IN-CONNECTOR;POLES:2;ROWS:1;STRAIGHT;PITCH:2 mm	[P0AAJ:02: {1.0}] [P0AAJ:02: {1.0}] [P0AAJ:02: {1.0}] [P0AAJ:04: {1.0}]	
24	7.0000	PC	G71-83103-05643		BOARD-IN-CONNECTOR;POLES:3;ROWS:1;STRAIGHT;PITCH:2 mm	[P0AAJ:02: {1.0}] [P0AAJ:02: {1.0}] [P0AAJ:02: {1.0}] [P0AAJ:02: {1.0}] [P0AAJ:02: {1.0}] [P0AAJ:02: {1.0}] [P0AAJ:02: {1.0}]	
25	1.0000	PC	G71-83107-05651		BOARD-IN-CONNECTOR;POLES:7;ROWS:1;STRAIGHT;PITCH:2 mm	[P0AAJ:02: {1.0}]	
26	4.0000	PC	G73-18509-01217		SOCKET;BOARD-IN;POLES:09;VACUUM TUBE;FOR 6L6GC;CERAMIC;COLOR:WHT;VERSION3;GZC8-Y-5	[P0AAJ:03: {4.0}(V1-V4)]	CUTOFF: IDENTIFIED FROM MI-TUBESOCKET/GZC8-Y
27	3.0000	PC	G73-28509-01218		SOCKET;POLES:09;VACUUM TUBE;FOR 12AX7;CERAMIC;COLOR:WHT;W/ SOLDER LUGS;VERSION1;TUS9PC9C	[P0AAJ:02: {3.0}(V5-V7)]	CUTOFF: IDENTIFIED FROM MI-TUBESOCKET/TUS9PC

Power Supply

	Quantity	Unit	Item	Rev	Description	Reference Designators	Notes
1	1.0000	PC	J60-60000-05201		TRAFO;AUDIO I/O;EIB3224;EAGLERISE		
2	1.0000	PC	J60-90234-04776		TRAFO;AUDIO I/O;EI0234(R1L);NANHAI NRE		
3	1.0000	PC	J67-20235-04777		TRAFO;CHOCK;EI0235(R1L);NANHAI NRE		
4	1.0000	PC	J67-23226-05202		TRAFO;CHOCK;EIB3226;EAGLERISE		
5	1.0000	PC	J65-66715-05199		TRAFO;EI-POWER;P0671;UL 120V;(EAGLERISE EIB3229)		(UL, BR)
6	1.0000	PC	J65-66714-05198		TRAFO;EI-POWER;P0671;EU 230V;(EAGLERISE EIB3217)		(EU, UK, SAA, AR)
7	1.0000	PC	J65-66717-05200		TRAFO;EI-POWER;P0671;JP 100V;(EAGLERISE EIB3228)		(JP, HL, SH)

Raw Material

	Quantity	Unit	Item	Rev	Description	Reference Designators	Notes
1	2.5000	G	E41-00000-86155		HOTMELT;HIGH TEMPERTURE GLUE;8811A-TW		
2	6.0000	G	E41-60038-50449		HOTMELT;HEN-FENG;HS-38		
3	35.0000	G	E41-60103-33085		GLUE;WOODEN;SY103		
4	4.0000	G	E41-60116-04068		GLUE;SUN-DA;SILCONE;SW-116-A	[P0AAJ:02: {4.0}]	
5	6.0000	G	E41-60268-50457		GLUE;SUNYES;820		
6	0.2500	KG	E41-60910-02812		GLUE;(GU-QIANG 910)		
7	110.0000	G	E44-13005-33084		PAINT;BLACK;S-3005		

Potentiometer

	Quantity	Unit	Item	Rev	Description	Reference Designators	Notes
1	2.0000	PC	I03-00000-01286		POTENTIOMETER;25 kohm;B;12 %;MONO;BULK;50-90gf;SHAFT:39.6MM	[P0AAJ:01: {2.0}{VR2, VR4}]	CUTOFF: IDENTIFIED FROM VR-09F30B253N00HT*P*
2	1.0000	PC	I03-00000-01293		POTENTIOMETER;250 kohm;B;12 %;MONO;BULK;50-90gf;SHAFT:39.6MM	[P0AAJ:01: {1.0}{VR3}]	CUTOFF: IDENTIFIED FROM VR-09F30B254N00HT/S*
3	1.0000	PC	I03-00000-01297		POTENTIOMETER;100 kohm;A;12 %;MONO;BULK;50-90gf;SHAFT:39.6MM	[P0AAJ:04: {1.0}{VR8}]	
4	2.0000	PC	I03-00000-18521		POTENTIOMETER;1 Mohm;D;20 %;MONO;0.05W;TORQUE:50-90gf.cm;SHAFT:39.6mm	[P0AAJ:01: {2.0}{VR6-VR7}]	CUTOFF: IDENTIFIED FROM VR-09F3010A105N00HH*
5	1.0000	PC	I03-00000-18918		POTENTIOMETER;1 Mohm;A;20 %;MONO;0.05W;TORQUE:50-90gf.cm;SHAFT:39.6mm	[P0AAJ:01: {1.0}{VR5}]	CUTOFF: 2POSSIBLE CHOICES

Switch

	Quantity	Unit	Item	Rev	Description	Reference Designators	Notes
1	3.0000	PC	I77-03422-02778		SWITCH;RADIAL;2P2T;PCB VERSION;LOCKING;NONSHORT;RAD2P	[P0AAJ:04: {3.0}{SW2-SW4}]	
2	1.0000	PC	I86-00423-01545		SWITCH;SLIDE;2P3T;PCB VERSION;LOCKING;NONSHORT;PBS-110-K2C21H	[P0AAJ:04: {1.0}{SW1}]	
3	2.0000	PC	I90-02211-03087		SWITCH;TOGGLE;TOGGLES:1;POLE:1;LOCKING;NONSHORT; SOLDER LUG;/ARCO C3900BAAA)		

Transistor

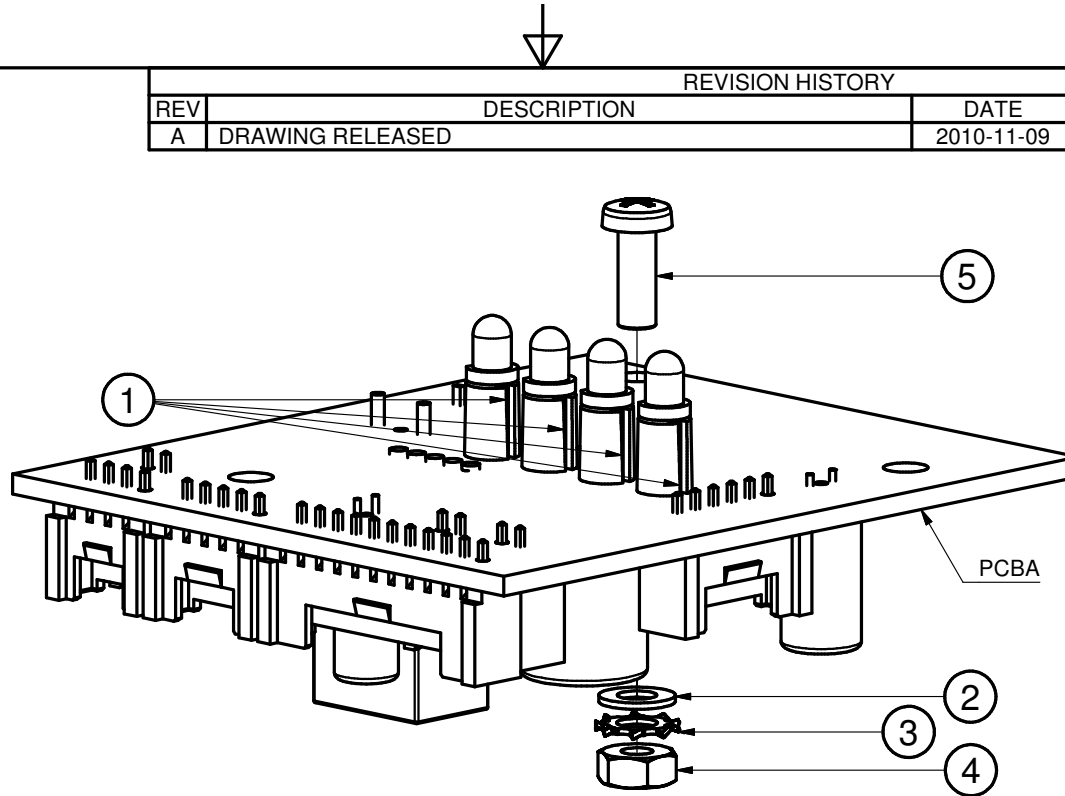
	Quantity	Unit	Item	Rev	Description	Reference Designators	Notes
1	2.0000	PC	J70-12555-10803		TRANSISTOR;2N5551;PITCH:2mm54;TO92;BENT LEAD;T/R	[P0AAJ:01: {2.0}(T1-T2)]	
2	1.0000	PC	J73-07000-00803		TRANSISTOR;MPSA44;TO-92;PITCH:2.54;TAPING	[P0AAJ:02: {1.0}(T3)]	
3	4.0000	PC	J73-08009-21703		TRANSISTOR;MBTA92;SOT	[P0AAC:00: {4.0}(T1-T4)]	
4	1.0000	PC	J73-16540-16603		TRANSISTOR;MMBT5401;SOT23	[P0AAC:00: {1.0}(Q1)]	

Vacuum Tube

	Quantity	Unit	Item	Rev	Description	Reference Designators	Notes
1	4.0000	PC	J83-69013-47108		TUBE;PENTODE;EL34;SHUGUANG		
2	4.0000	PC	J83-69013-48008		TUBE;PENTODE;EL34;SHUGUANG;NO ARTWORK		
3	3.0000	PC	J84-17012-78009		TUBE;DOUBLE TRIODE;12AX7;SHUGUANG;NO ARTWORK		
4	4.0000	PC	J84-68008-47109		TUBE;DOUBLE TRIODE;ECC83A;SHUGUANG		
5	1.0000	PC	J84-68008-57109		TUBE;DOUBLE TRIODE;P0965;ECC83C;SHUGUANG;FST.NO:001		
6	1.0000	PC	J84-68008-67109		TUBE;DOUBLE TRIODE;P0964;ECC83B;SHUGUANG;FST.NO:001		

Wooden Part

	Quantity	Unit	Item	Rev	Description	Reference Designators	Notes
1	2.0000	PC	B70-00100-00196		WOOD;TRIANGLE WEDGE 1;B1520;DST.NO:001;DPT.NO:00196;(B1520-TRIANGLE WEDGE(1)-REVA.DWG)		WOOD SUPPORT
2	0.0160	PC	B70-00100-01074		WOOD;BOARD;MDF;2440*1220*12;DST.NO:001;DPT.NO :01074;(WOOD BOARD THICKNESS 5-REVA.DWG)		
3	2.0000	PC	B70-00100-08992		WOOD;SUP FHOR;P0671;DST.NO:001;DPT.NO:08992;(P0671- WOOD_SUP_FHOR-REVA.DWG)		WOOD SUPPORT
4	2.0000	PC	B70-00100-08994		WOOD;SUP FVER;P0671;DST.NO:001;DPT.NO:08994;(P0671- WOOD_SUP_FVER-REVA.DWG)		WOOD SUPPORT
5	4.0000	PC	B70-00100-08995		WOOD;SUP RVER;P0671;DST.NO:001;DPT.NO:08995;(P0671- WOOD_SUP_RVER-REVA.DWG)		WOOD SUPPORT
6	1.0000	PC	B70-00300-13938		WOOD;LEFT;P0671;DST.NO:003;DPT.NO:13938;(P0671- WOOD_LEFT-REVC.DWG)		WOOD LEFT
7	1.0000	PC	B70-00300-13939		WOOD;RIGHT;P0671;DST.NO:003;DPT.NO:13939;(P0671 -WOOD_RIGHT-REVC.DWG)		WOOD RIGHT
8	1.0000	PC	B70-00400-13940		WOOD;BOTTOM;P0671;DST.NO:004;DPT.NO:13940;(P06 71-WOOD_BOTTOM-REVD.DWG)		WOOD BOTTOM
9	2.0000	PC	B70-00400-14857		WOOD;TOP;P0671;DST.NO:004;DPT.NO:14857;(P0671- WOOD_TOP-REVD.idw)		WOOD TOP
10	1.0000	PC	B70-00500-14605		WOOD;FRONT;P0671;DST.NO:005;DPT.NO:14605;(P067 1-WOOD_FRONT-REVE)		
11	0.2630	PC	B72-42221-00190		WOOD BOARD;CHINA BOARD;2440*1220*18		




REVISION HISTORY				
REV	DESCRIPTION	DATE	REVISED	APPROVED
A	DRAWING RELEASED	2010-11-09	N.CARDINAL	SHIRLEY.XIAO

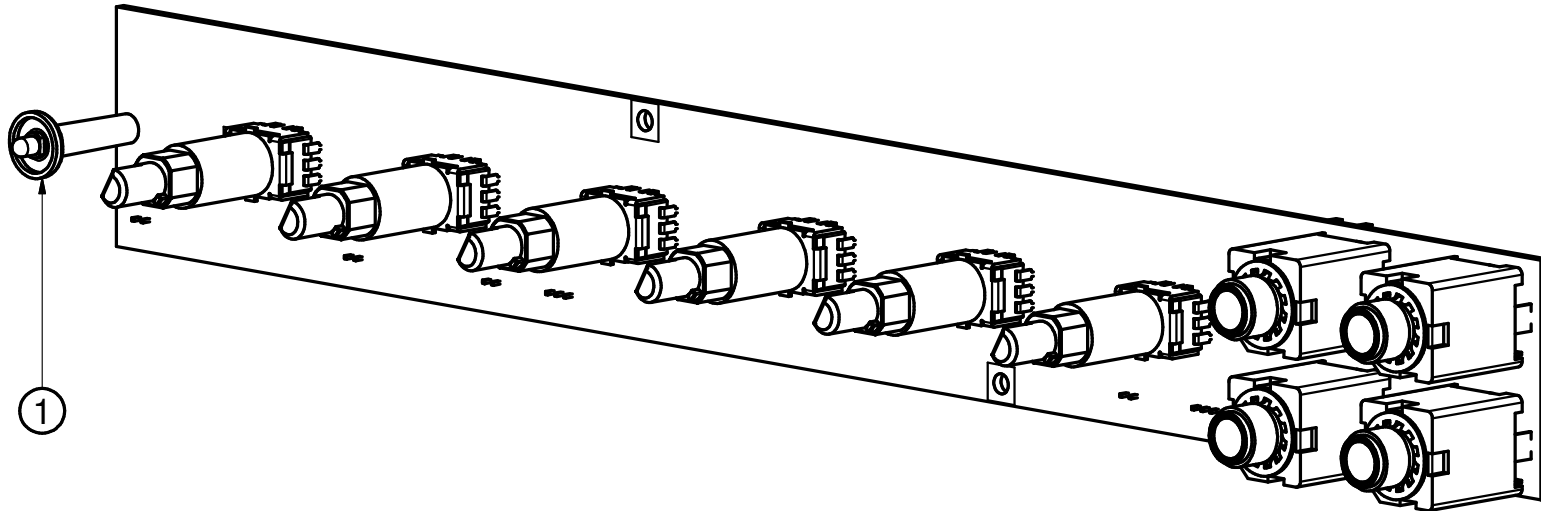
5	F88-30080-30291	1	SC-M03*08-03-B-ZP-SLV[R]	
4	F85-03000-44001	1	SC-NUHEXM03[R]	
3	F96-40300-60053	1	SC-WA-03-030*060*005-CR3-SLV[R]	
2	F96-10300-60050	1	SC-WAPL3*6*0.5[R]	
1	G58-00400-11804	4	PLA-LEDSPACERVAMP[R]	022-02000-15853
ITEM	ITEM NUMBER	QTY	ITEM CODE	CONSTRUCTION NO.

MECHANICAL PARTS LIST

All information (including drawings and diagrams) contained in this document is the property of MUSIC GROUP LTD. Addressees whom the information is confided to shall maintain the information in confidence and shall not release it to any unauthorized third parties (except under attorney client privilege or under appropriate confidentiality agreements). Any unauthorized disclosure, use, application or any other dealings in the information shall result in civil and/or (where applicable) criminal liabilities and penalties.

 MUSIC GROUP	PROJECT: P0AAC	DRAWN: N.CARDINAL	DESCRIPTION: P0AAC-PCB_TUBECTL1-EXP	
	MATERIAL: N/A	CHECKED: HUA MING.YE	SIZE: A4	DRAWING NUMBER: 014-00000-25459
	FINISH: N/A	APPROVED: SHIRLEY.XIAO	SCALE 2:1	REV: A
	DATE: 2010-11-09	SHEET 1 OF 1		



REVISION HISTORY				
REV	DESCRIPTION	DATE	REVISED	APPROVED
A	DRAWING RELEASED	2010-12-22	N.CARDINAL	SHIRLEY.XIAO

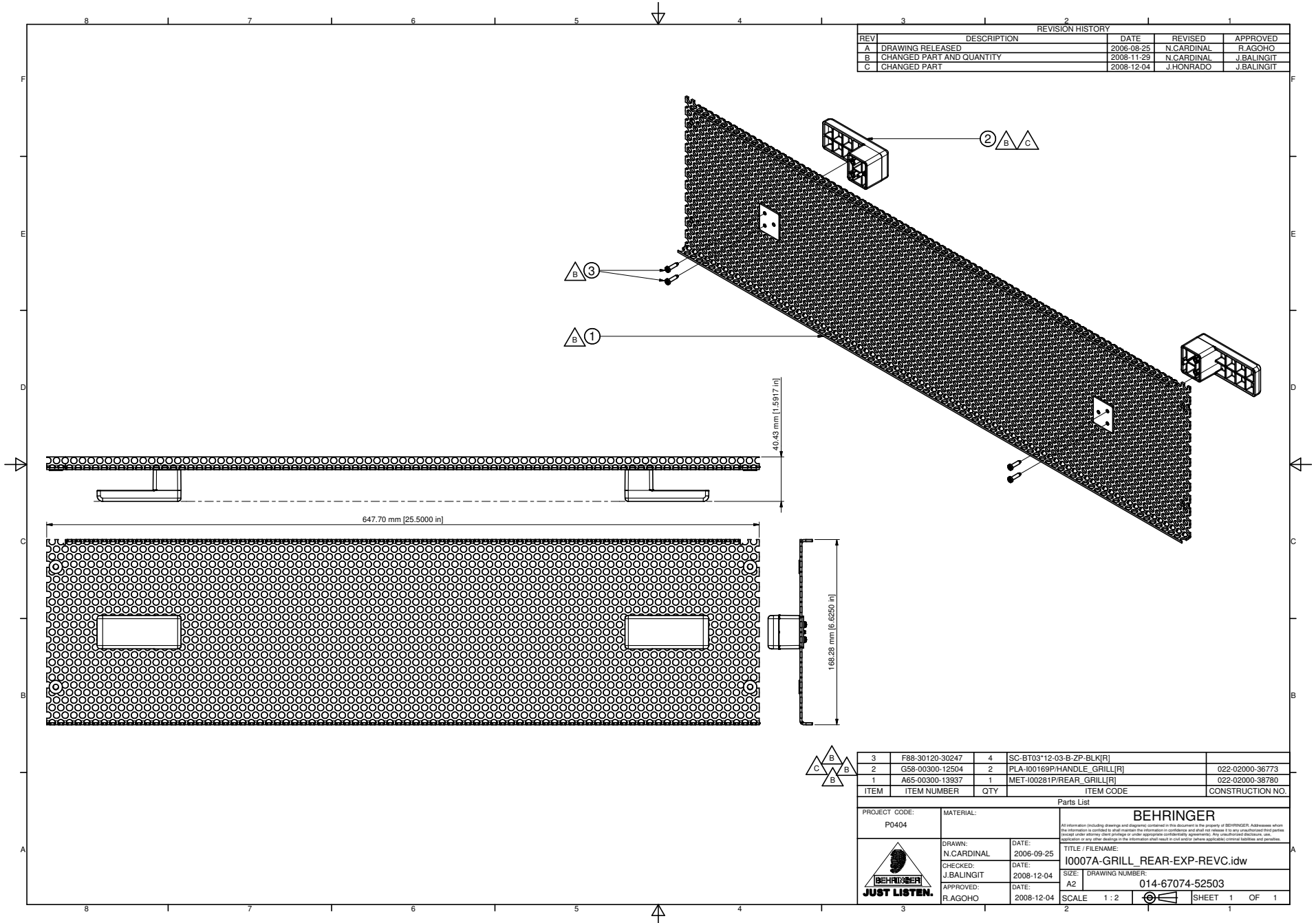


1	G58-00100-12649	1	PLA-I00454P/SPACER_LED[R]	022-02000-40884
ITEM	ITEM NUMBER	QTY	ITEM CODE	CONSTRUCTION NO.

MECHANICAL PARTS LIST

All information (including drawings and diagrams) contained in this document is the property of MUSIC GROUP LTD. Addressees whom the information is confided to shall maintain the information in confidence and shall not release it to any unauthorized third parties (except under attorney client privilege or under appropriate confidentiality agreements). Any unauthorized disclosure, use, application or any other dealings in the information shall result in civil and/or (where applicable) criminal liabilities and penalties.

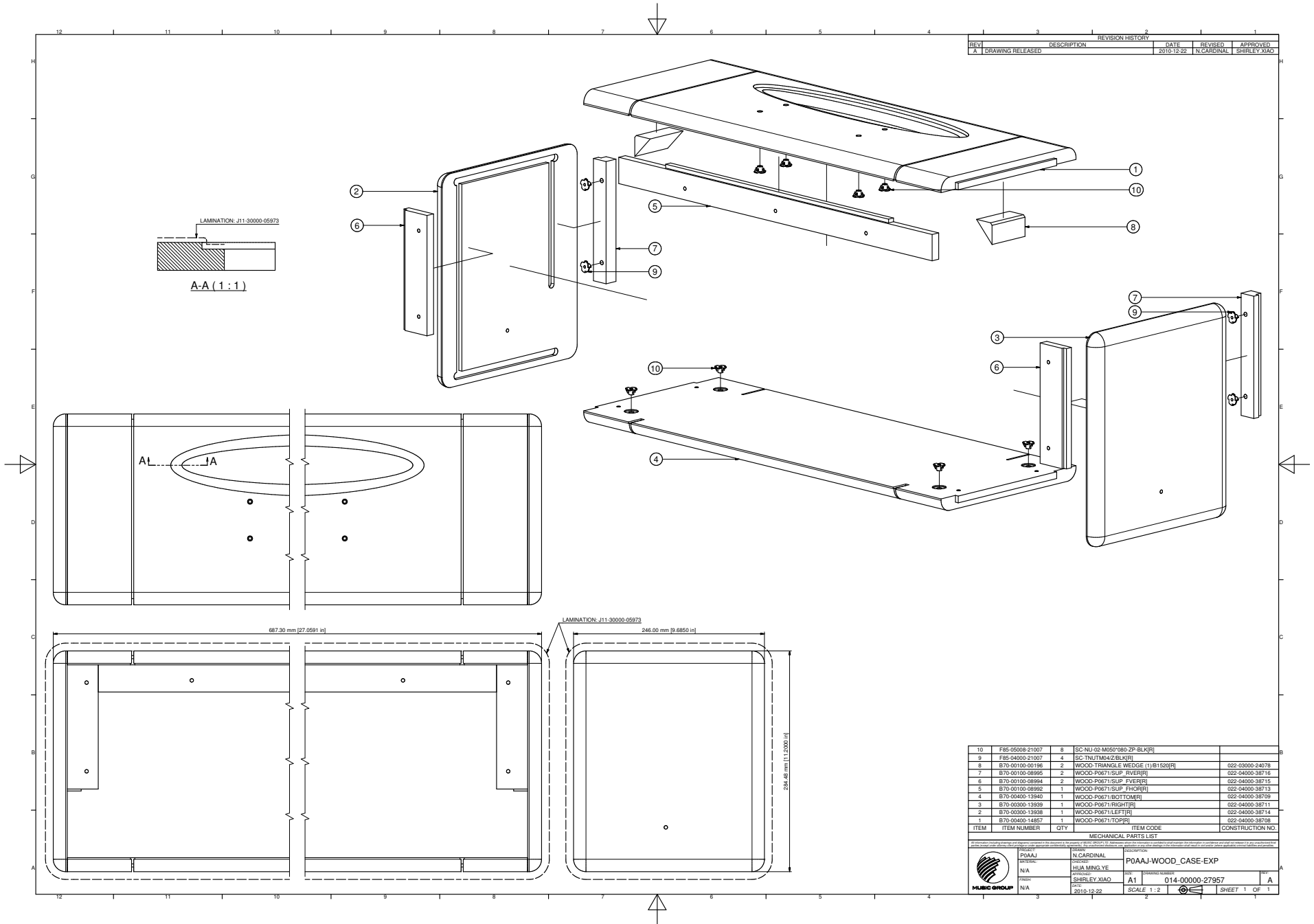
 MUSIC GROUP	PROJECT: P0AAJ	DRAWN: N.CARDINAL	DESCRIPTION: P0AAJ-PCB01-ASM		
	MATERIAL: N/A	CHECKED: HUA MING.YE			
	FINISH: N/A	APPROVED: SHIRLEY.XIAO	SIZE: A4	DRAWING NUMBER: 014-00000-27958	REV: A
		DATE: 2010-12-22	SCALE 1:1		SHEET 1 OF 1

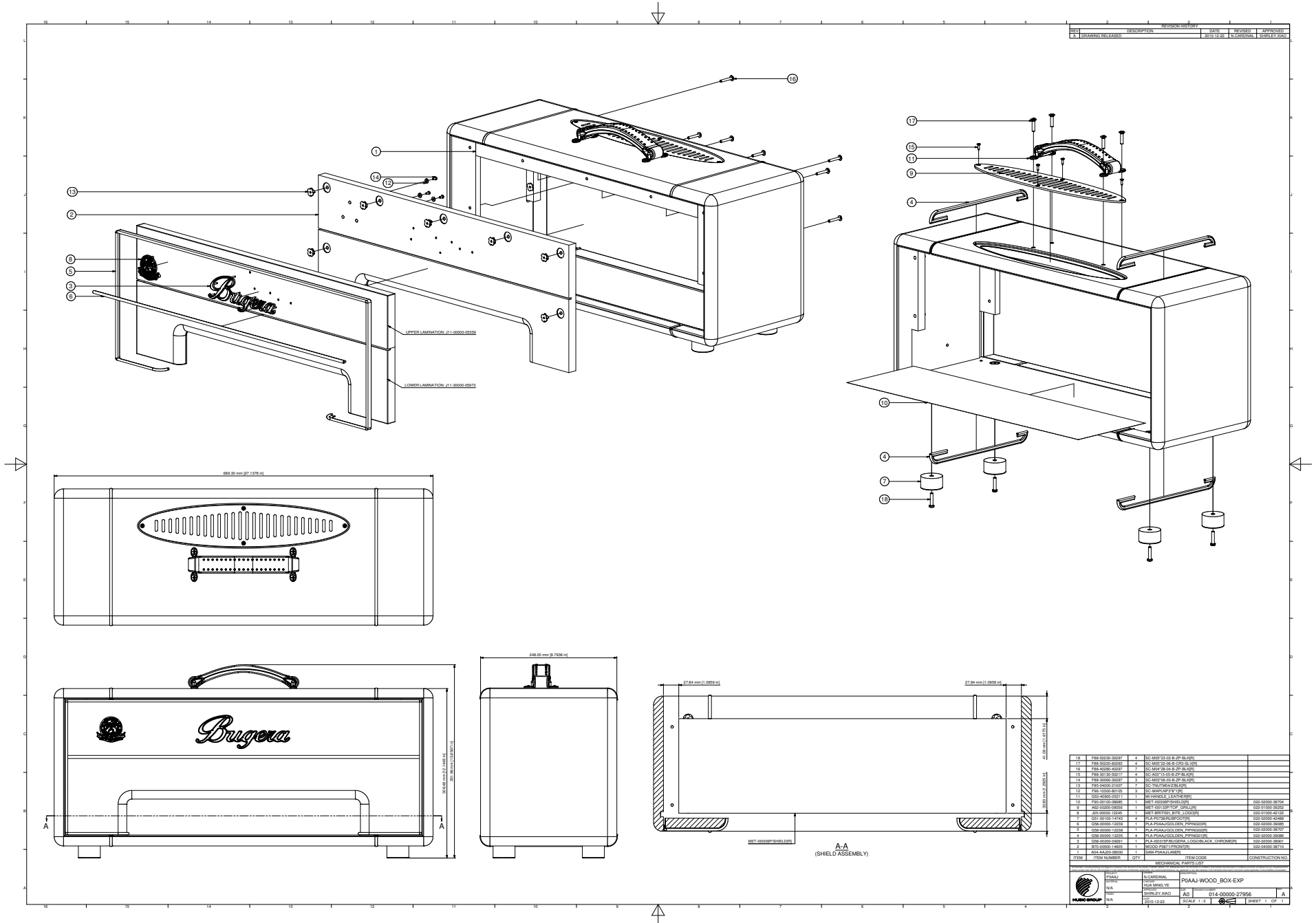


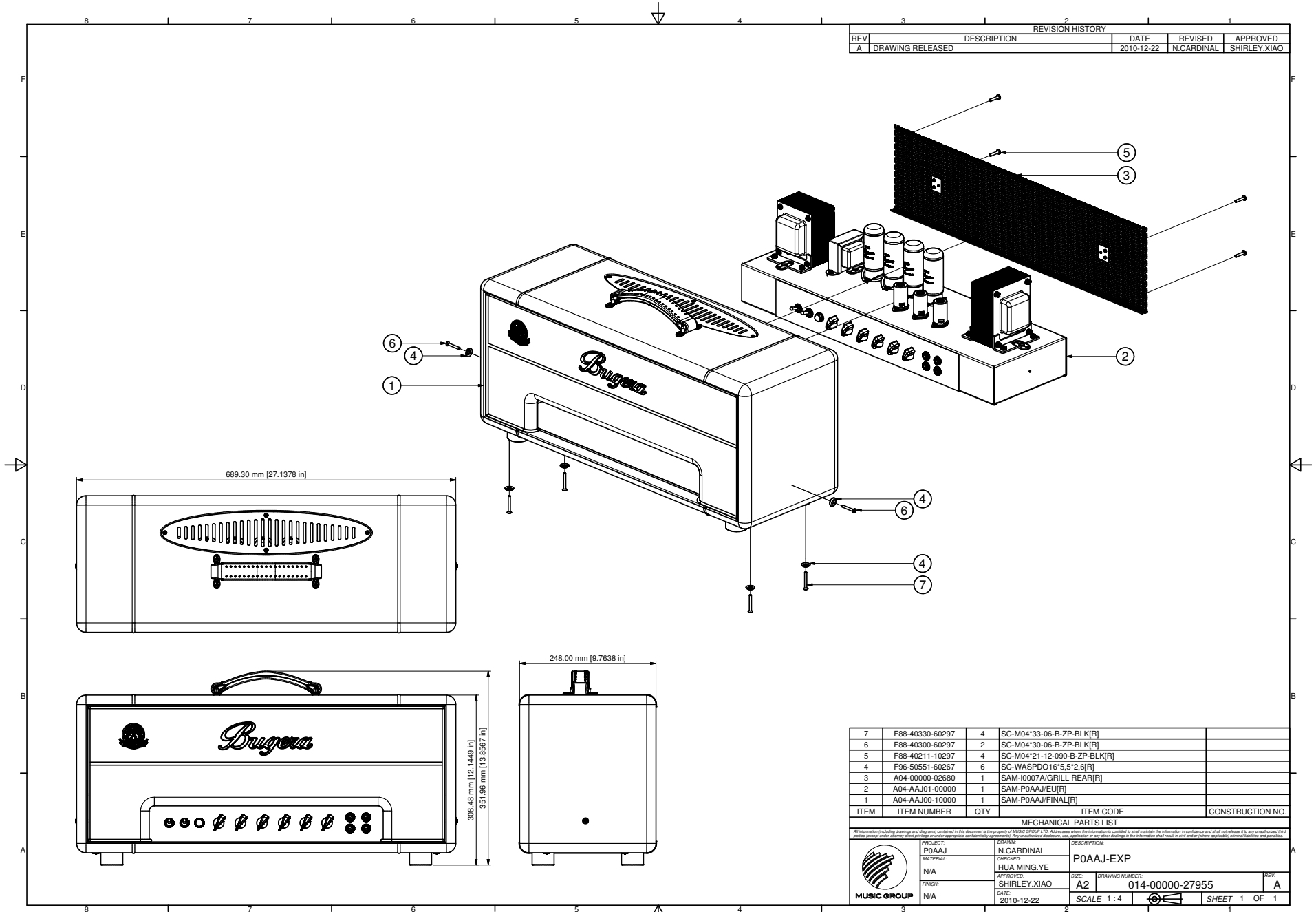
REVISION HISTORY				
REV	DESCRIPTION	DATE	REVISED	APPROVED
A	DRAWING RELEASED	2006-08-25	N.CARDINAL	R.AGOHO
B	CHANGED PART AND QUANTITY	2008-11-29	N.CARDINAL	J.BALINGIT
C	CHANGED PART	2008-12-04	J.HONRADO	J.BALINGIT

ITEM	ITEM NUMBER	QTY	ITEM CODE	CONSTRUCTION NO.
3	F88-30120-30247	4	SC-BT03*12-03-B-ZP-BLK[R]	
2	G58-00300-12504	2	PLA-100169P/HANDLE_GRILL[R]	022-02000-36773
1	A65-00300-13937	1	MET-100281P/REAR_GRILL[R]	022-02000-38790

PROJECT CODE: P0404		MATERIAL:		BEHRINGER <small>All information including drawings and diagrams contained in this document is the property of BEHRINGER. All information herein is confidential and shall remain the property of BEHRINGER. All information is confidential and shall not be released to any unauthorized third parties without the prior written approval of BEHRINGER. Any unauthorized disclosure, use, application or any other drawings in the information shall result in civil and/or (where applicable) criminal liabilities and penalties.</small>	
		DRAWN: N.CARDINAL CHECKED: J.BALINGIT APPROVED: R.AGOHO			
DATE: 2006-09-25		DATE: 2008-12-04		TITLE / FILENAME: I0007A-GRILL_REAR-EXP-REVC.idw	
DATE: 2008-12-04		DATE: 2008-12-04		SIZE: DRAWING NUMBER: A2 014-67074-52503	
DATE: 2008-12-04		DATE: 2008-12-04		SCALE 1 : 2	



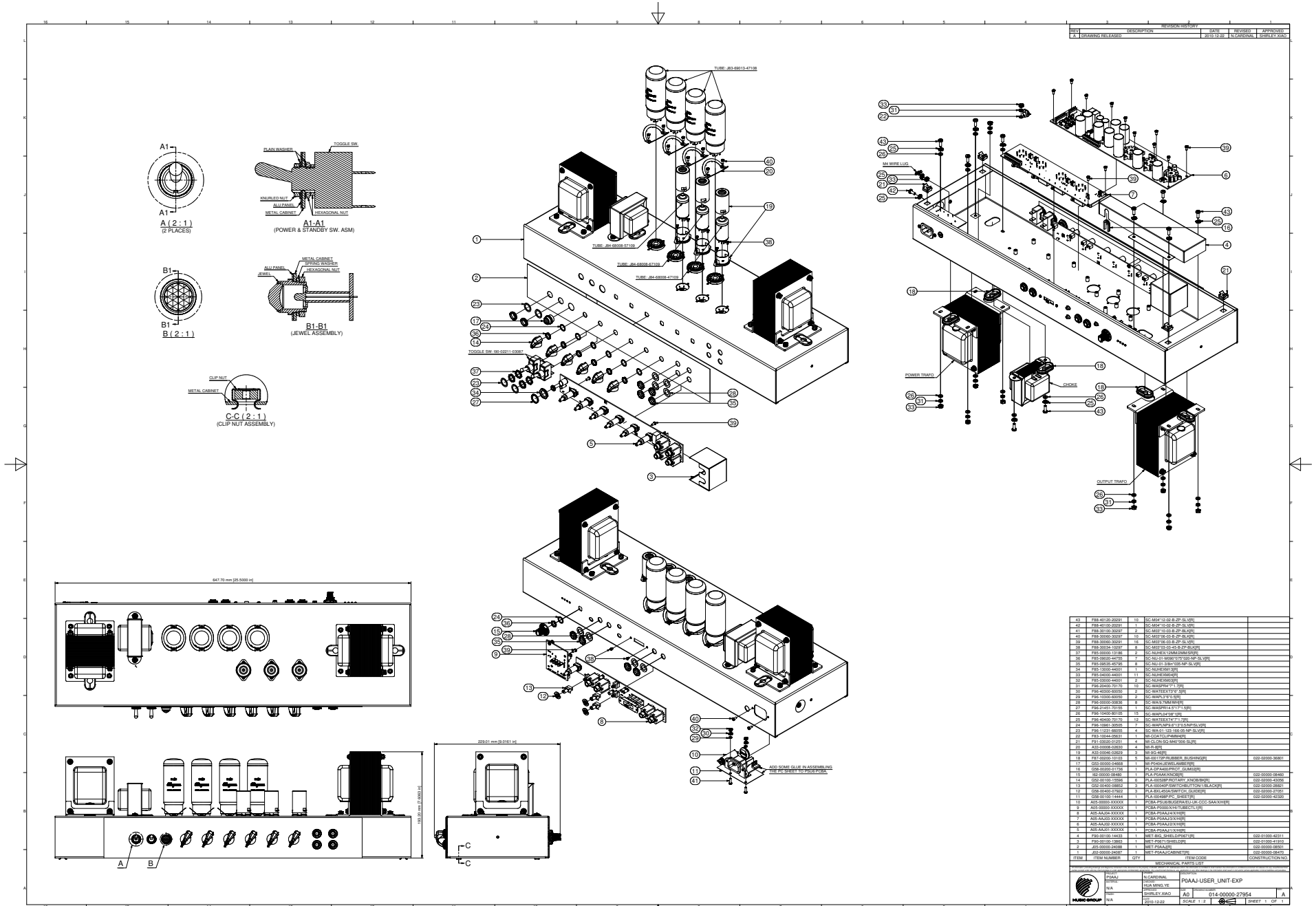




REVISION HISTORY				
REV	DESCRIPTION	DATE	REVISED	APPROVED
A	DRAWING RELEASED	2010-12-22	N.CARDINAL	SHIRLEY.XIAO

ITEM	ITEM NUMBER	QTY	ITEM CODE	CONSTRUCTION NO.
7	F88-40330-60297	4	SC-M04*33-06-B-ZP-BLK[R]	
6	F88-40300-60297	2	SC-M04*30-06-B-ZP-BLK[R]	
5	F88-40211-10297	4	SC-M04*21-12-090-B-ZP-BLK[R]	
4	F96-50551-60267	6	SC-WASPDO16*5*2.6[R]	
3	A04-00000-02680	1	SAM-10007A/GRILL REAR[R]	
2	A04-AAJ01-00000	1	SAM-P0AAJ/EUJ[R]	
1	A04-AAJ00-10000	1	SAM-P0AAJ/FINAL[R]	

MECHANICAL PARTS LIST				
PROJECT:	P0AAJ	DRAWN:	N.CARDINAL	DESCRIPTION:
MATERIAL:	N/A	CHECKED:	HUA MING.YE	P0AAJ-EXP
FINISH:	N/A	APPROVED:	SHIRLEY.XIAO	SIZE:
		DATE:	2010-12-22	A2
				DRAWING NUMBER:
				014-00000-27955
				REV:
				A
				SCALE 1:4
				SHEET 1 OF 1



Bugera