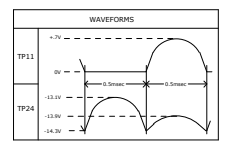
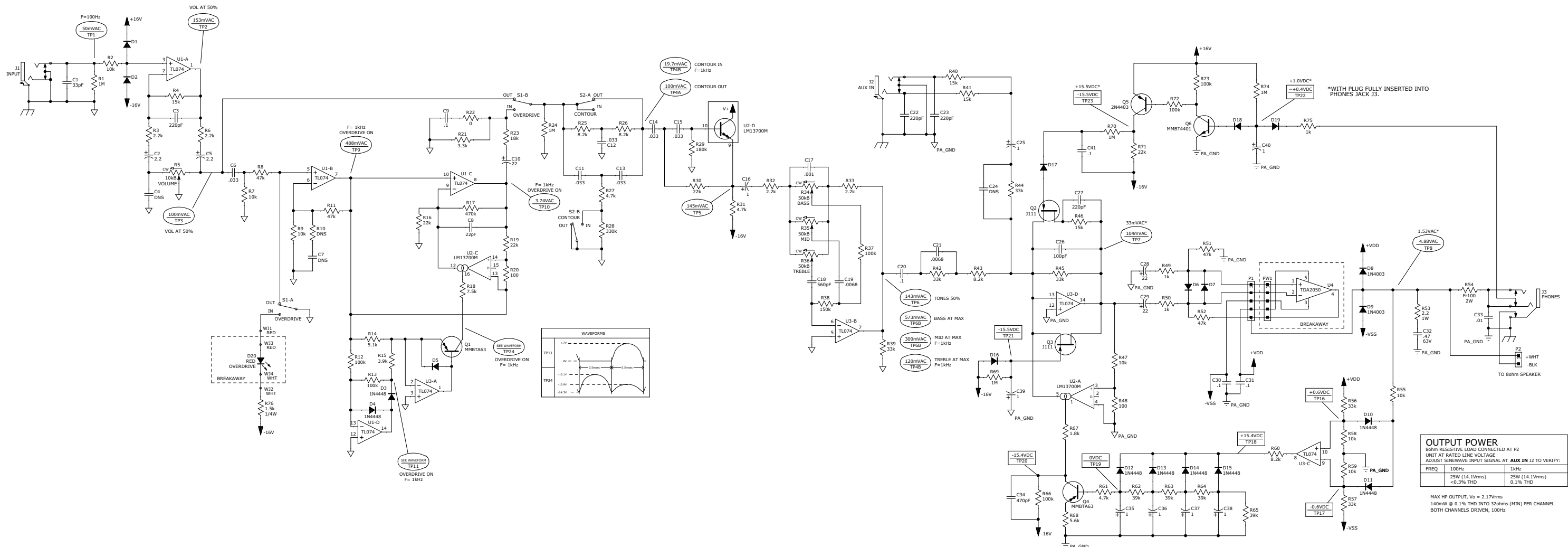


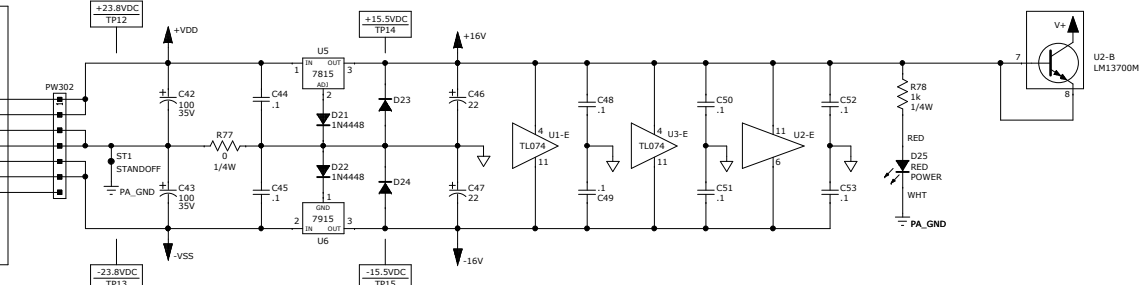
REVISIONS			
REV.	DESCRIPTION	DATE	APPROVED
A	PR2463	30-MAY-13	dBL



OUTPUT POWER			
8ohm RESISTIVE LOAD CONNECTED AT P2			
UNIT AT RATED LINE VOLTAGE			
ADJUST SINEWAVE INPUT SIGNAL AT AUX IN 12 TO VERIFY:			
FREQ	100Hz	1kHz	
	25W (4.1Vrms)	25W (4.1Vrms)	
	<0.3% THD	<0.1% THD	

MAX HP OUTPUT,  $V_0 = 2.17V_{rms}$   
 140mW @ 0.1% THD INTO 32ohms (MIN) PER CHANNEL  
 BOTH CHANNELS DRIVEN, 100Hz

25W SMPS ASSY  
 P/N 2463ICT008 (120V)  
 P/N 2463ICT017 (230V)  
 REFER TO SCHEMATIC  
 P/N 2464ICT014

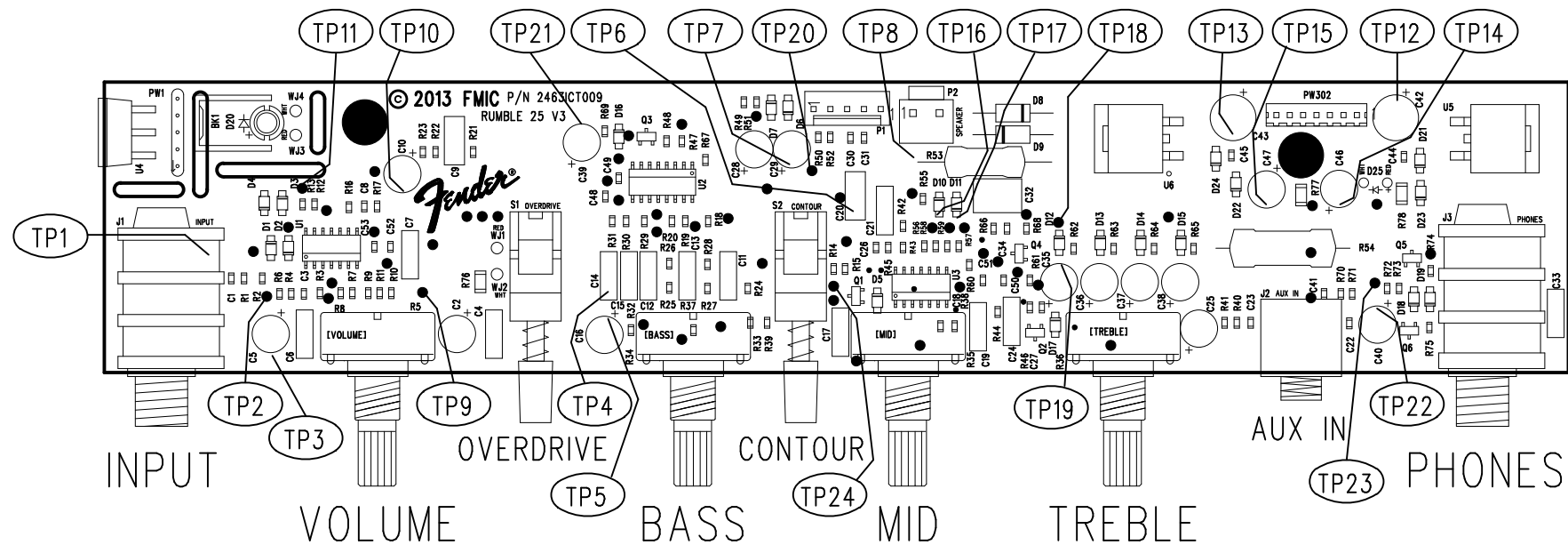


- COMPONENTS NOT STUFFED (DNS): C4, C7, C24, R10
- AC AND DC VOLTAGES ARE READ TO GROUND WITH A DVM UNDER THE FOLLOWING CONDITIONS:  
 UNIT AT RATED LINE VOLTAGE  
 NO CONNECTION AT P2 (TO MINIMIZE HEATING)  
 NO INPUT SIGNAL FOR TP12-23  
 50mVrms, 100Hz SINEWAVE INPUT SIGNAL AT J1  
 ALL CONTROLS AT 12 O'CLOCK (50% ROTATION)  
 VOLTAGES MAY VARY BY +/-20%  
 ADDITIONAL CONDITIONS FOR TPs-11, TP24:  
 S1 (OVERDRIVE) SWITCH IN  
 50mVrms, 1kHz SINEWAVE INPUT SIGNAL
- LAST REFERENCE DESIGNATORS: C33, D25, J3, P2, PW302, Q6, R78, TP24, U6, W14
- THIS SCHEMATIC IS FOR PCB FABRICATION P/N 2463ICT010 AND PCB ASSEMBLY P/N 2463ICT009.
- ALL DIODES ARE 1N4148 OR 1N4448
- ALL POLARIZED CAPACITORS IN uF, 20% OR BETTER; 50V MINIMUM. (POWER SUPPLY BYPASS CAPACITORS ARE 20%).
- ALL RESISTORS IN OHMS, 5%, 1/10W.


NOTES: (UNLESS OTHERWISE NOTED)

THIS DOCUMENT CONTAINS INFORMATION OF A PROPRIETARY NATURE TO FENDER MUSICAL INSTRUMENTS AND IS SUBMITTED TO YOU IN CONFIDENCE AND SHALL NOT BE DISCLOSED OR TRANSMITTED TO OTHERS WITHOUT AUTHORIZATION FROM FENDER MUSICAL INSTRUMENTS.		<b>MUSICAL INSTRUMENTS</b> Corona, CA U.S.A.	
CHECKED BY: _____	DATE: 25-MAR-14		
APPROVED BY: _____	DATE: 21-MAR-14	SIZE: D	DRAWING NUMBER: 2463ICT011
DRAWN: L.KOTHRAD	ENGR: L.KOTHRAD	RELEASE DATE: 30-MAY-13	REV. A
DATABASE FILE: Z2463S.SCH		SHEET: 1 OF 2	

REVISIONS			
REV.	DESCRIPTION	DATE	APPROVED
A	PR 2463	30-MAY-13	dBL



FILM/DWG:	SERVICE DIAGRAM
DATABASE:	Z2463P.PCB DATE: 30-MAY-13

THIS DOCUMENT CONTAINS INFORMATION OF A PROPRIETARY NATURE TO FENDER MUSICAL INSTRUMENTS AND IS SUBMITTED TO YOU IN CONFIDENCE AND SHALL NOT BE DISCLOSED OR TRANSMITTED TO OTHERS WITHOUT AUTHORIZATION FROM FENDER MUSICAL INSTRUMENTS.		 <b>MUSICAL INSTRUMENTS</b> Corona, CA U.S.A.	
CHECKED BY: _____ DATE: 25-MAR-14		TITLE: SERVICE DIAGRAM, COMBINED (PCB assy) RUMBLE 25 V3 BASS AMPLIFIER	
APPROVED BY: _____ DATE: 21-MAR-14		SIZE <b>B</b>	DRAWING NUMBER 2463ICT011
DRAWN: I.KOTHRADÉ ENGR: I.KOTHRADÉ	DATABASE FILE: Z2463P.PCB	RELEASE DATE: 30-MAY-13	REV. <b>A</b> SHEET 2 OF 2

1. SEE SHEET 1 FOR TEST CONDITIONS AND TEST POINT VALUES.  
 NOTES: (UNLESS OTHERWISE NOTED)

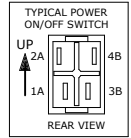
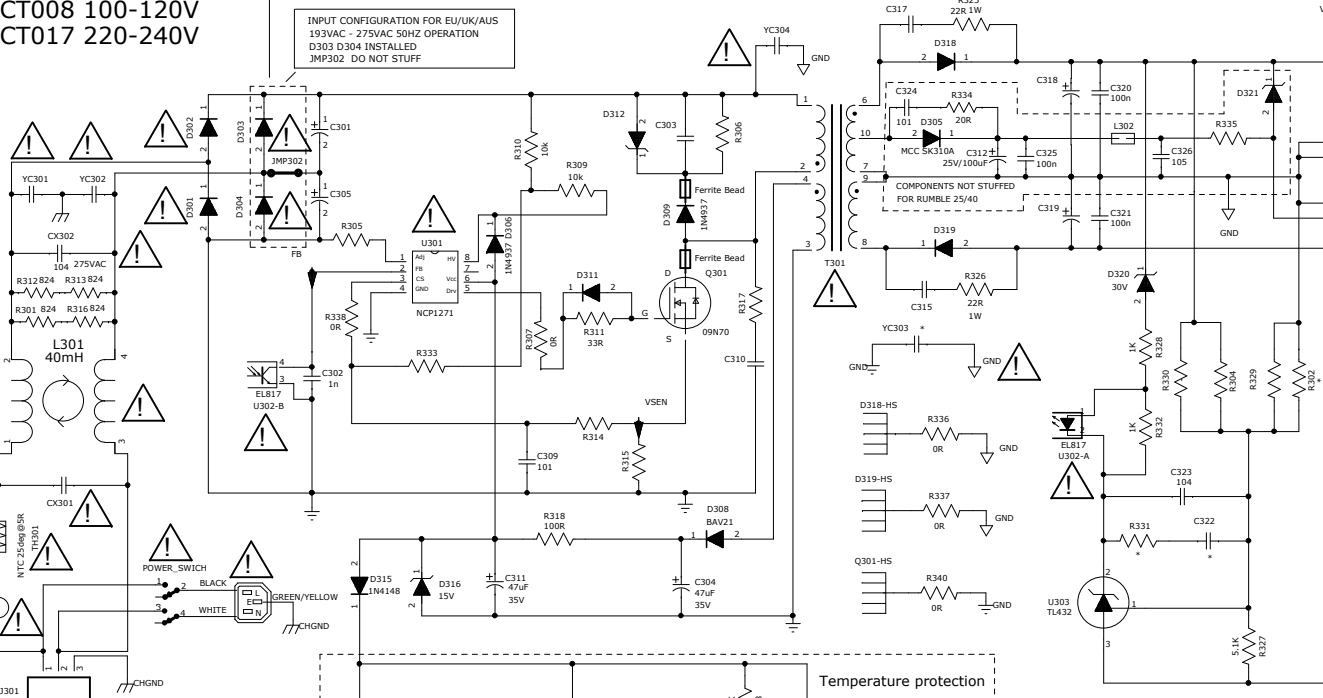
REVISIONS			
REV.	DESCRIPTION	DATE	APPROVED
A	PR2464	01-MAY-2013	dBL

**SWITCH MODE POWER SUPPLY PCB**  
 40W ASSY P/N 2464ICT010 100-120V  
 40W ASSY P/N 2464ICT011 220-240V  
 25W ASSY P/N 2463ICT008 100-120V  
 25W ASSY P/N 2463ICT017 220-240V

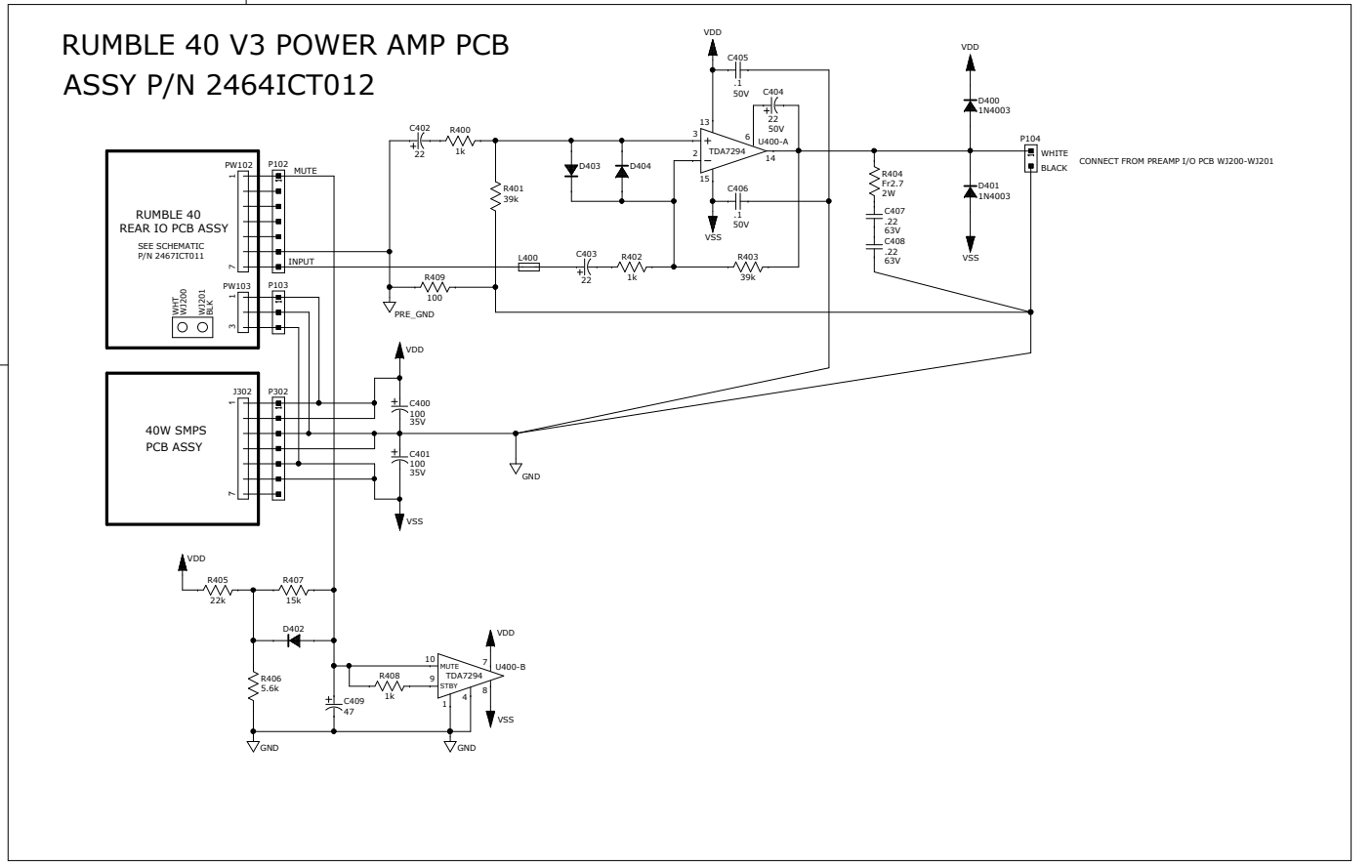
INPUT CONFIGURATION FOR USA/JAPAN  
 88VAC - 138VAC 50/60HZ OPERATION  
 DO NOT STUFF D303 D304  
 JMF302 INSTALLED

INPUT CONFIGURATION FOR EU/UK/AUS  
 193VAC - 275VAC 50HZ OPERATION  
 D303 D304 INSTALLED  
 JMF302 DO NOT STUFF

NAME	VALUE 25W	VALUE 40W
YC301	4.7K	4.7K
YC302	2.2K	2.2K
R330	30K	30K
R331	10K	10K
R332	10K	10K
R333	10K	10K
R334	10K	10K
R335	10K	10K
R336	10K	10K
R337	10K	10K
R338	10K	10K
R339	10K	10K
R340	10K	10K
R341	10K	10K
R342	10K	10K
R343	10K	10K
R344	10K	10K
R345	10K	10K
R346	10K	10K
R347	10K	10K
R348	10K	10K
R349	10K	10K
R350	10K	10K
R351	10K	10K
R352	10K	10K
R353	10K	10K
R354	10K	10K
R355	10K	10K
R356	10K	10K
R357	10K	10K
R358	10K	10K
R359	10K	10K
R360	10K	10K
R361	10K	10K
R362	10K	10K
R363	10K	10K
R364	10K	10K
R365	10K	10K
R366	10K	10K
R367	10K	10K
R368	10K	10K
R369	10K	10K
R370	10K	10K
R371	10K	10K
R372	10K	10K
R373	10K	10K
R374	10K	10K
R375	10K	10K
R376	10K	10K
R377	10K	10K
R378	10K	10K
R379	10K	10K
R380	10K	10K
R381	10K	10K
R382	10K	10K
R383	10K	10K
R384	10K	10K
R385	10K	10K
R386	10K	10K
R387	10K	10K
R388	10K	10K
R389	10K	10K
R390	10K	10K
R391	10K	10K
R392	10K	10K
R393	10K	10K
R394	10K	10K
R395	10K	10K
R396	10K	10K
R397	10K	10K
R398	10K	10K
R399	10K	10K
R400	10K	10K
R401	10K	10K
R402	10K	10K
R403	10K	10K
R404	10K	10K
R405	10K	10K
R406	10K	10K
R407	10K	10K
R408	10K	10K
R409	10K	10K
R410	10K	10K
R411	10K	10K
R412	10K	10K
R413	10K	10K
R414	10K	10K
R415	10K	10K
R416	10K	10K
R417	10K	10K
R418	10K	10K
R419	10K	10K
R420	10K	10K
R421	10K	10K
R422	10K	10K
R423	10K	10K
R424	10K	10K
R425	10K	10K
R426	10K	10K
R427	10K	10K
R428	10K	10K
R429	10K	10K
R430	10K	10K
R431	10K	10K
R432	10K	10K
R433	10K	10K
R434	10K	10K
R435	10K	10K
R436	10K	10K
R437	10K	10K
R438	10K	10K
R439	10K	10K
R440	10K	10K
R441	10K	10K
R442	10K	10K
R443	10K	10K
R444	10K	10K
R445	10K	10K
R446	10K	10K
R447	10K	10K
R448	10K	10K
R449	10K	10K
R450	10K	10K
R451	10K	10K
R452	10K	10K
R453	10K	10K
R454	10K	10K
R455	10K	10K
R456	10K	10K
R457	10K	10K
R458	10K	10K
R459	10K	10K
R460	10K	10K
R461	10K	10K
R462	10K	10K
R463	10K	10K
R464	10K	10K
R465	10K	10K
R466	10K	10K
R467	10K	10K
R468	10K	10K
R469	10K	10K
R470	10K	10K
R471	10K	10K
R472	10K	10K
R473	10K	10K
R474	10K	10K
R475	10K	10K
R476	10K	10K
R477	10K	10K
R478	10K	10K
R479	10K	10K
R480	10K	10K
R481	10K	10K
R482	10K	10K
R483	10K	10K
R484	10K	10K
R485	10K	10K
R486	10K	10K
R487	10K	10K
R488	10K	10K
R489	10K	10K
R490	10K	10K
R491	10K	10K
R492	10K	10K
R493	10K	10K
R494	10K	10K
R495	10K	10K
R496	10K	10K
R497	10K	10K
R498	10K	10K
R499	10K	10K
R500	10K	10K



3.\* = NOT STUFFED FOR RUMBLE 25/40  
 2.\* = OPEN  
 Note: 1. SEE MATRIX FOR STUFFING DIFFERENCES  
 (Unless otherwise noted)

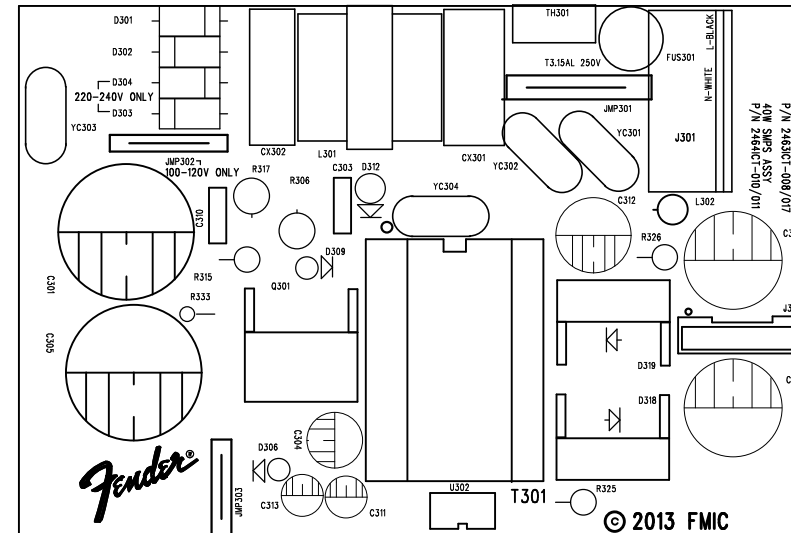


THIS DOCUMENT CONTAINS INFORMATION OF A PROPRIETARY NATURE TO FENDER MUSICAL INSTRUMENTS AND IS SUBMITTED TO YOU IN CONFIDENCE AND SHALL NOT BE DISCLOSED OR TRANSMITTED TO OTHERS WITHOUT AUTHORIZATION FROM FENDER MUSICAL INSTRUMENTS.		 <b>MUSICAL INSTRUMENTS</b> Corona, CA U.S.A.	
CHECKED BY:	DATE: 25-MAR-14	TITLE: SERVICE DIAGRAM, COMBINED RUMBLE V3 25/40W SMPS + POWER AMPLIFIER	REV. A
APPROVED BY:	DATE: 25-MAR-14	SIZE: D	DRAWING NUMBER: 2464ICT014
DRAWN: D. LEWIS	ENGR: D. LEWIS	RELEASE DATE: 22-MAY-12	SHEET: 1 OF 3
DATABASE FILE: RUMBLE_SMPS_PA.SCH			

5. THIS SCHEMATIC IS FOR PCB FABRICATIONS P/N 2464ICT017 (SMPS), 2464ICT013 (PWR) AND PCB ASSEMBLIES P/N 2463ICT008 (SMPS 25W 100-120V), 2464ICT010 (SMPS 40W 100-120V), 2464ICT011 (SMPS 40W 220-240V), 2464ICT012 (SMPS 25W 220-240V), 2464ICT017 (SMPS 40W 220-240V), 2464ICT012 (PWR).  
 6. ALL DIODES ARE 1N4148 OR 1N4148B.  
 3. ALL POLARIZED CAPACITORS IN uF, 20%, 16V MINIMUM.  
 2. ALL UNPOLARIZED CAPACITORS IN uF, 10% OR BETTER; 50V MINIMUM. (POWER SUPPLY BYPASS CAPACITORS ARE 20%).  
 1. ALL RESISTORS IN OHMS, 5%; 1/10W.  
 NOTES: (UNLESS OTHERWISE NOTED)

REVISIONS


REV.	DESCRIPTION	DATE	APPROVED
A	PR2464	13-JUN-13	dBL



FILM/DWG: SERVICE DIAGRAM  
 DATABASE: Z2464P1.PCB DATE: 13-JUN-13

1. SEE SHEET 1 FOR STUFFING OPTIONS, TEST CONDITIONS, AND TEST POINT VALUES.

NOTES: (UNLESS OTHERWISE NOTED)

THIS DOCUMENT CONTAINS INFORMATION OF A PROPRIETARY NATURE TO FENDER MUSICAL INSTRUMENTS AND IS SUBMITTED TO YOU IN CONFIDENCE AND SHALL NOT BE DISCLOSED OR TRANSMITTED TO OTHERS WITHOUT AUTHORIZATION FROM FENDER MUSICAL INSTRUMENTS.		 MUSICAL INSTRUMENTS Corona, CA U.S.A.	
CHECKED BY: _____ DATE: 25-MAR-14		TITLE: SERVICE DIAGRAM, COMBINED (PCB assy) RUMBLE V3 25/40W SMPS PCB	
APPROVED BY: _____ DATE: 21-MAR-14		SIZE <b>B</b>	DRAWING NUMBER 2464ICT014
DRAWN: D. LEWIS ENGR: D. LEWIS	DATABASE FILE: Z2464P1.PCB	RELEASE DATE: 13-JUN-13	SHEET 2 OF 3 REV. A