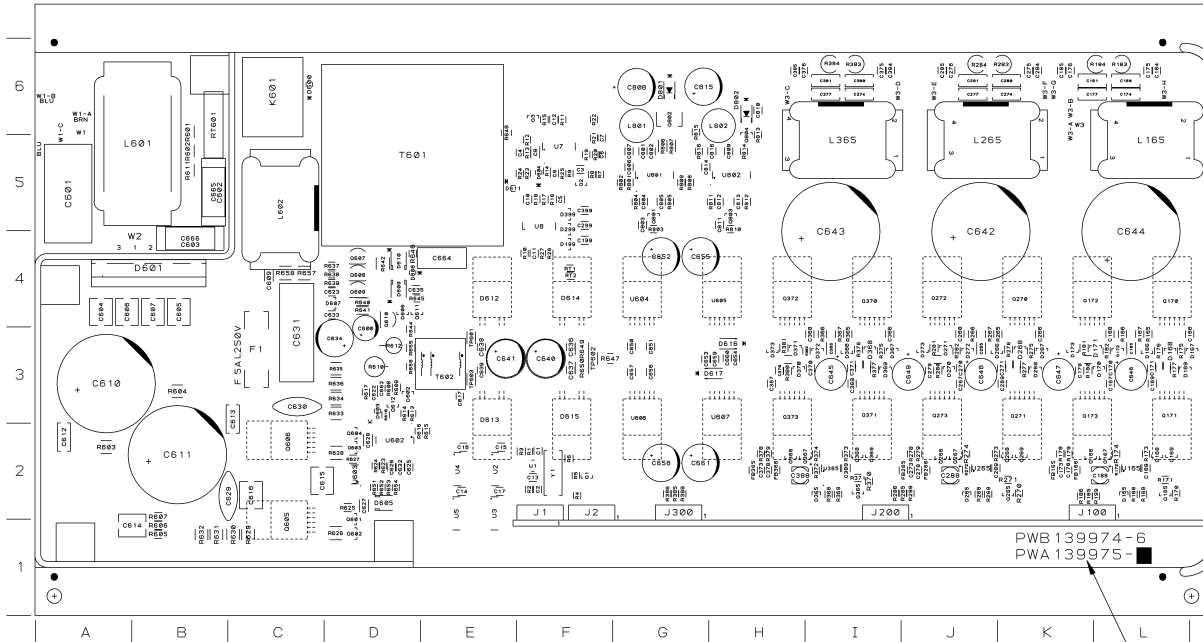


REVISION HISTORY					
E. C. N.	ZONE	REV	DESCRIPTION	DATE	APPROVED
					DWN CM PE
		1	SEE 138657-4_1.XLS FOR COMPONENT DATA AND REVISION HISTORY.	04-13-10	TRW EB

COMPONENT MAP



ALL T0220
PACKAGES
ARE MOUNTED
TO THE BOTTOM
OF THE BOARD

PWB 139974 - 6
PWA 139975 - 6

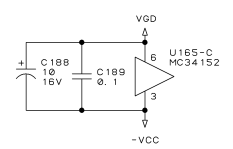
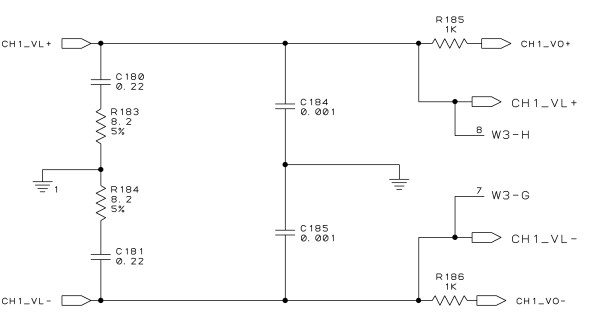
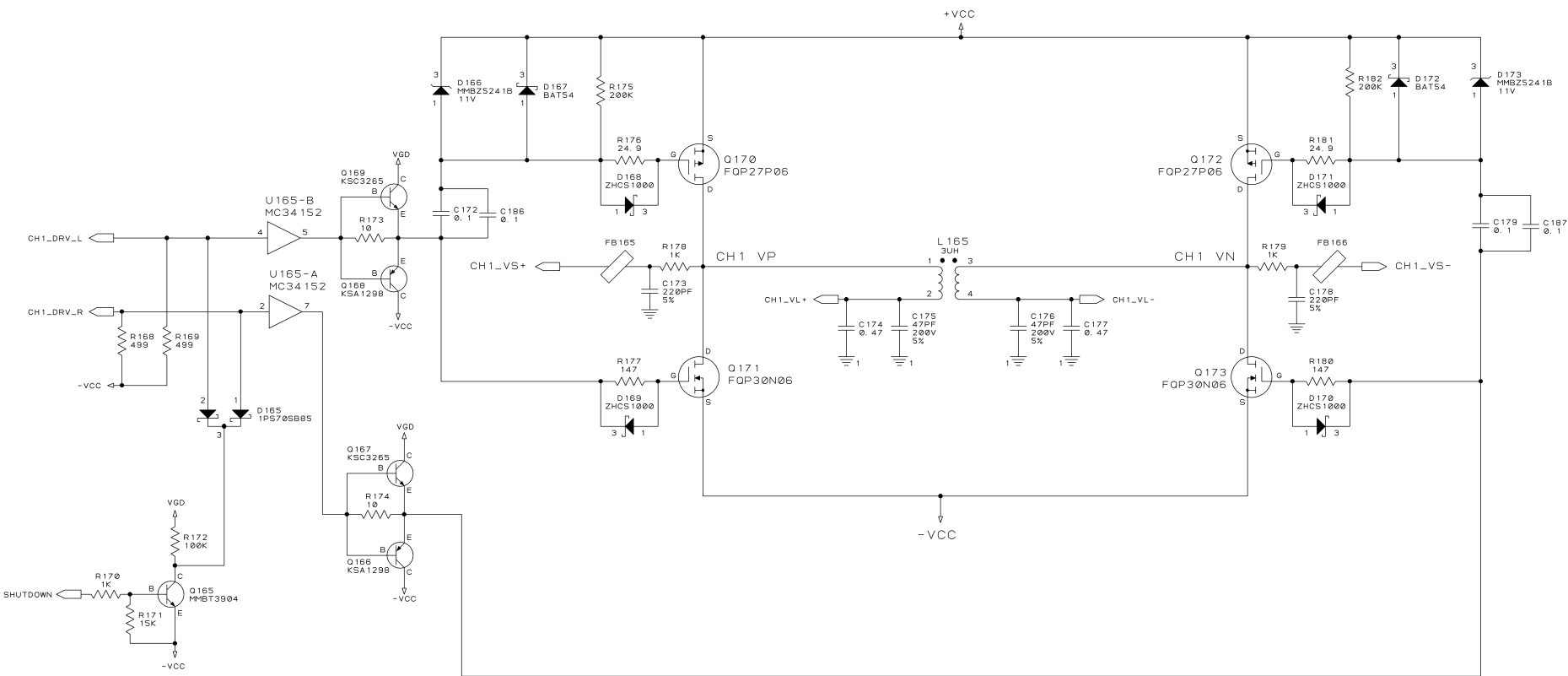
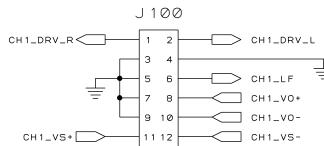
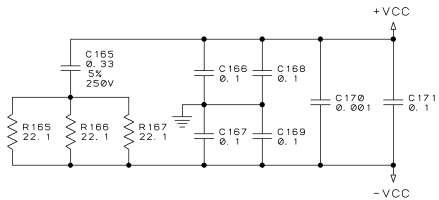
CROSS OUT AND MARK
PWA 138657-2

UNCONTROLLED
UNLESS OTHERWISE MARKED IN RED INK BY CM AS A
CONTROLLED COPY. COPIES OF THESE DOCUMENTS
INCLUDING ASSOCIATED ELECTRONIC REPRODUCTIONS
ARE FOR REFERENCE ONLY. VERIFY LATEST
REVISION PRIOR TO USE.

THESE DRAWINGS AND SPECIFICATIONS ARE THE
PROPERTY OF CROWN INTERNATIONAL, INC. AND
SHALL NOT BE REPRODUCED, COPIED, OR USED
AS THE BASIS FOR THE MANUFACTURE OR SALE
OF APPARATUS OR DEVICES WITHOUT PERMISSION.

DISTRIBUTION	DWN	TRW	04-13-10	 1718 W. MISHAWAKA RD. ELKHART IN, 46517 PHONE 317-434-5000 WWW.CROWNAUDIO.COM
FILENAME	CM	EB	04-13-10	
138657-4_1_01.PCB	PE			TITLE
TOLERANCE UNLESS OTHERWISE SPECIFIED				PWA, PRX600 3CH MAIN
.00 = ±.02"				SIZE DWG NO.
.010 = ±.010"				C 138657-4
DRILLS = ±.003"				REV
DO NOT SCALE DRAWING				1
	SCALE NONE	PROJ NO. PRXVP	SHEET 1 OF 6	

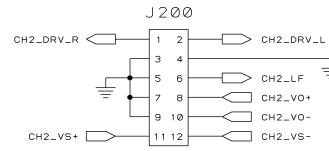
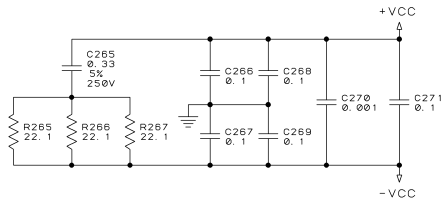
POWER SUPPLY FILTERING



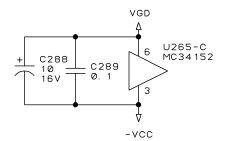
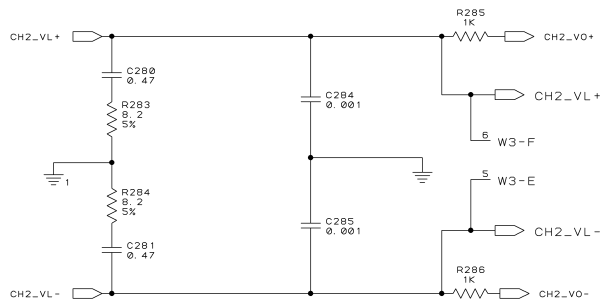
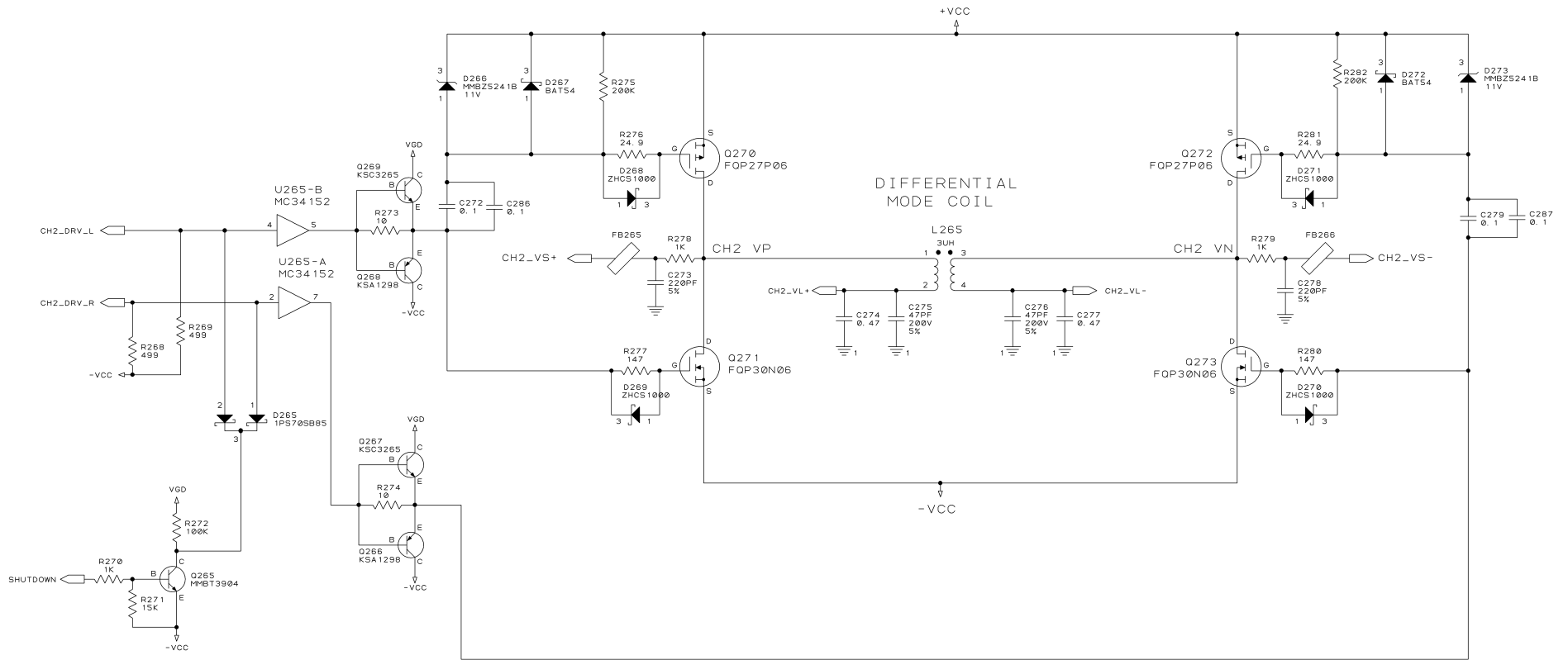
CH1 OUTPUT

UNCONTROLLED UNLESS OTHERWISE MARKED IN RED INK BY CH AS A CONTROLLED COPY. COPIES OF THESE DOCUMENTS INCLUDING ASSOCIATED ELECTRONIC REPRODUCTIONS ARE FOR REFERENCE ONLY.		THESE DRAWINGS AND SPECIFICATIONS ARE THE PROPERTY OF CROWN INTERNATIONAL, INC. AND SHALL NOT BE REPRODUCED, COPIED, OR USED AS THE BASIS FOR THE MANUFACTURE OR SALE OF APPARATUS OR DEVICES WITHOUT PERMISSION.		SIZE C	DWG NO. 138657-4	REV 1
SCALE NONE		PROJ NO. MAMPJ00		SHEET 2 OF 6		

POWER SUPPLY FILTERING



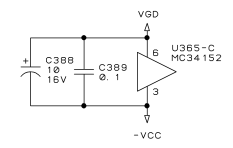
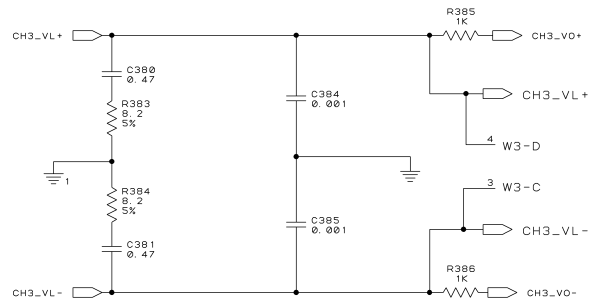
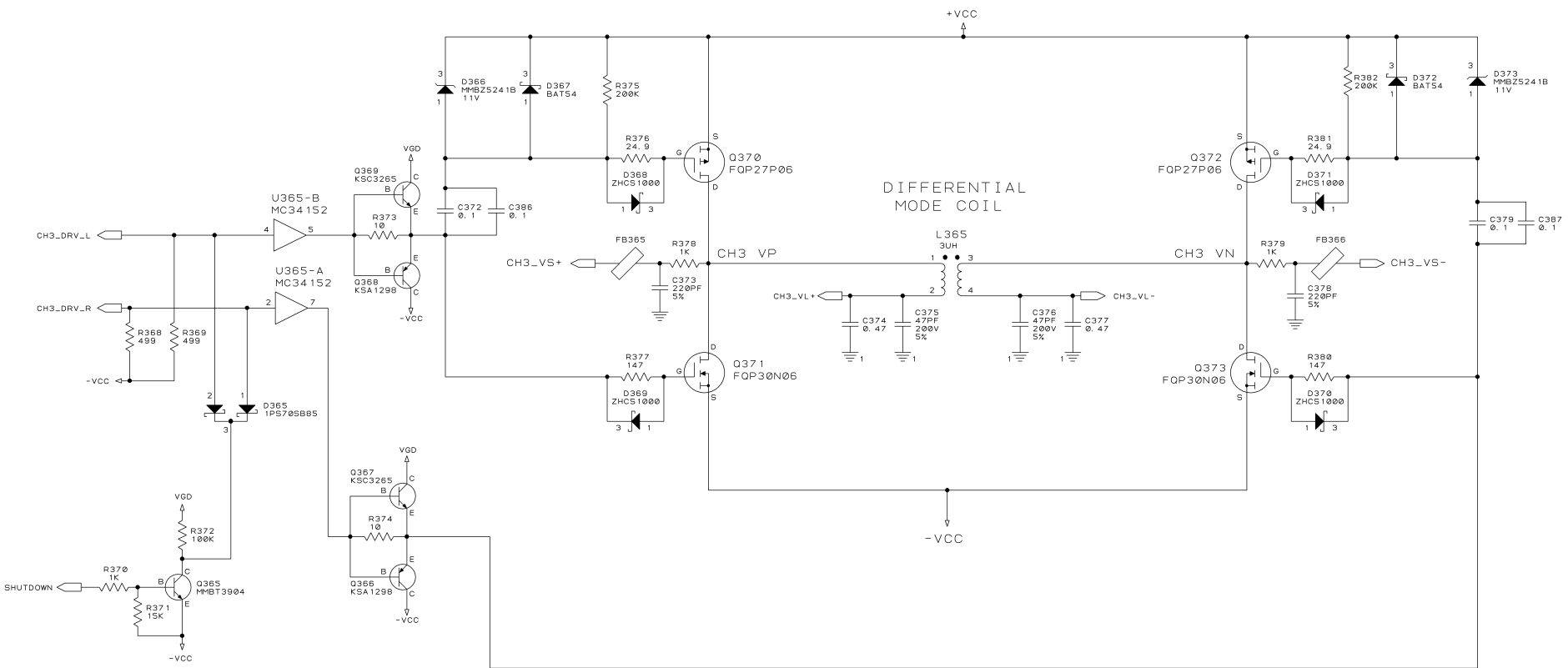
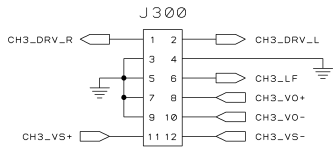
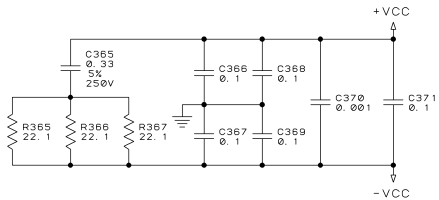
DIFFERENTIAL MODE COIL



CH2 OUTPUT

UNCONTROLLED UNLESS OTHERWISE MARKED IN RED INK BY CH AS A CONTROLLED COPY. COPIES OF THESE DOCUMENTS INCLUDING ASSOCIATED ELECTRONIC REPRODUCTIONS ARE FOR REFERENCE ONLY.		THESE DRAWINGS AND SPECIFICATIONS ARE THE PROPERTY OF CROWN INTERNATIONAL, INC. AND SHALL NOT BE REPRODUCED, COPIED, OR USED AS THE BASIS FOR THE MANUFACTURE OR SALE OF APPARATUS OR DEVICES WITHOUT PERMISSION.		SIZE C	DWG NO. 138657-4	REV 1
SCALE NONE		PROJ NO. MAMPJ80		SHEET 3 OF 6		

POWER SUPPLY FILTERING



CH3 OUTPUT

UNCONTROLLED UNLESS OTHERWISE MARKED IN RED INK BY CH AS A CONTROLLED COPY. COPIES OF THESE DOCUMENTS INCLUDING ASSOCIATED ELECTRONIC REPRODUCTIONS ARE FOR REFERENCE ONLY.		THESE DRAWINGS AND SPECIFICATIONS ARE THE PROPERTY OF CROWN INTERNATIONAL, INC. AND SHALL NOT BE REPRODUCED, COPIED, OR USED AS THE BASIS FOR THE MANUFACTURE OR SALE OF APPARATUS OR DEVICES WITHOUT PERMISSION.		SIZE C	DWG NO. 138657-4	REV 1
SCALE NONE		PROJ NO. MAMPJ80		SHEET 4 OF 6		

D

C

B

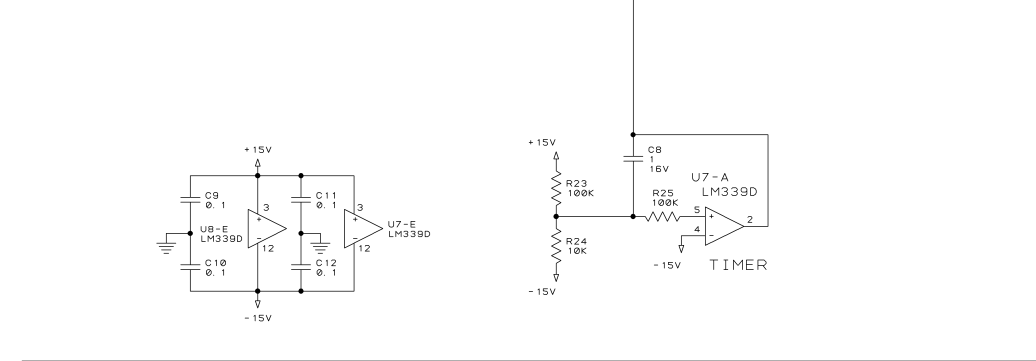
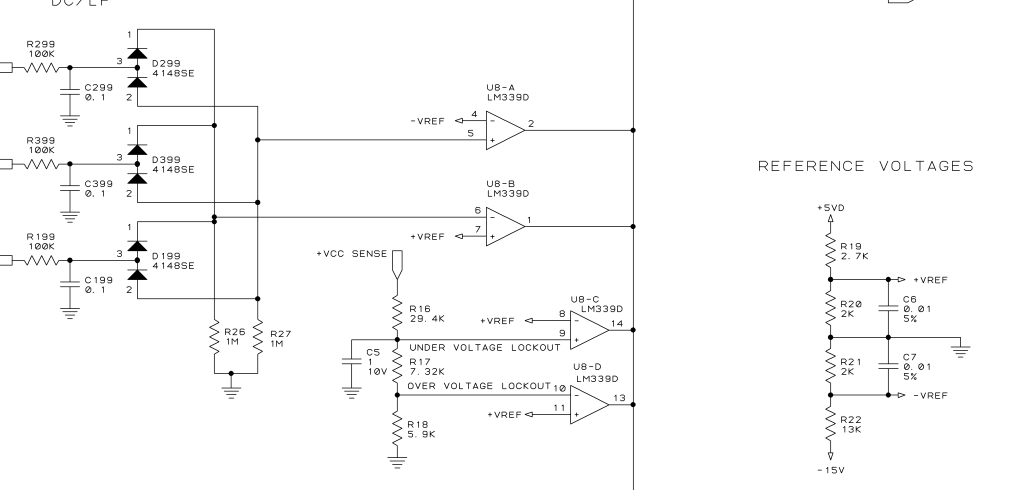
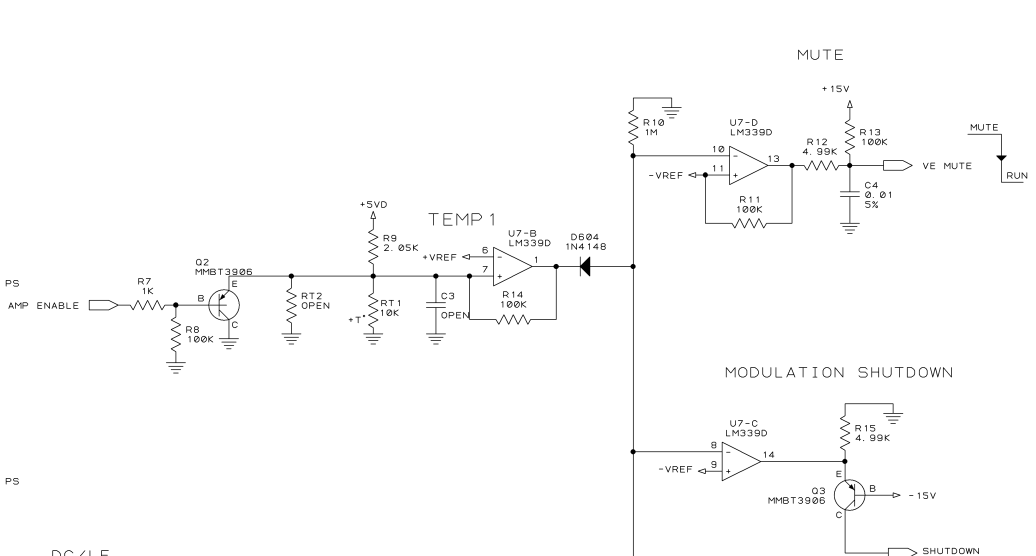
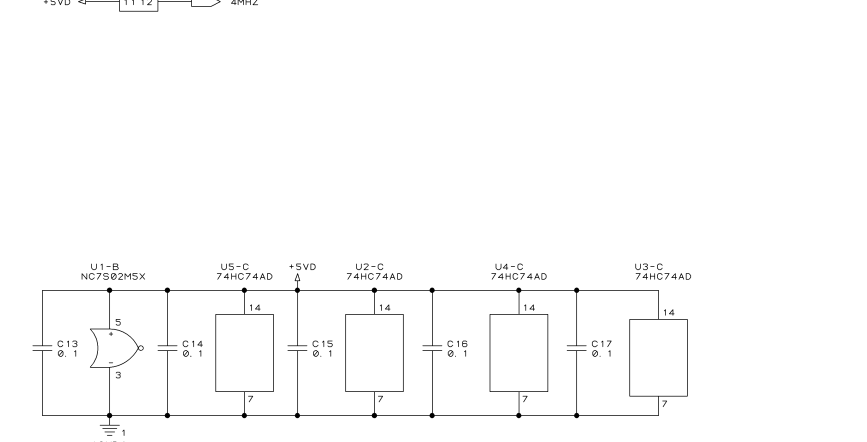
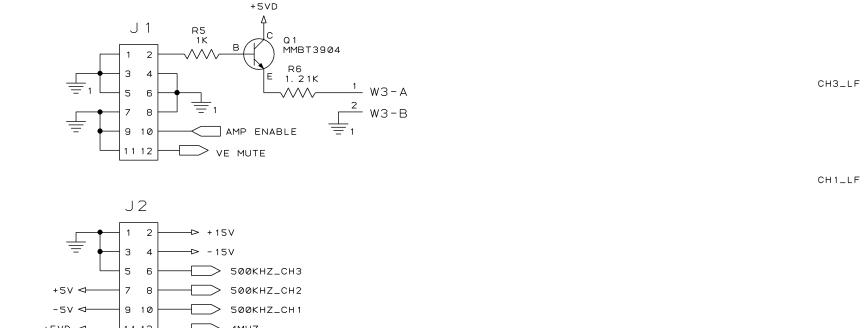
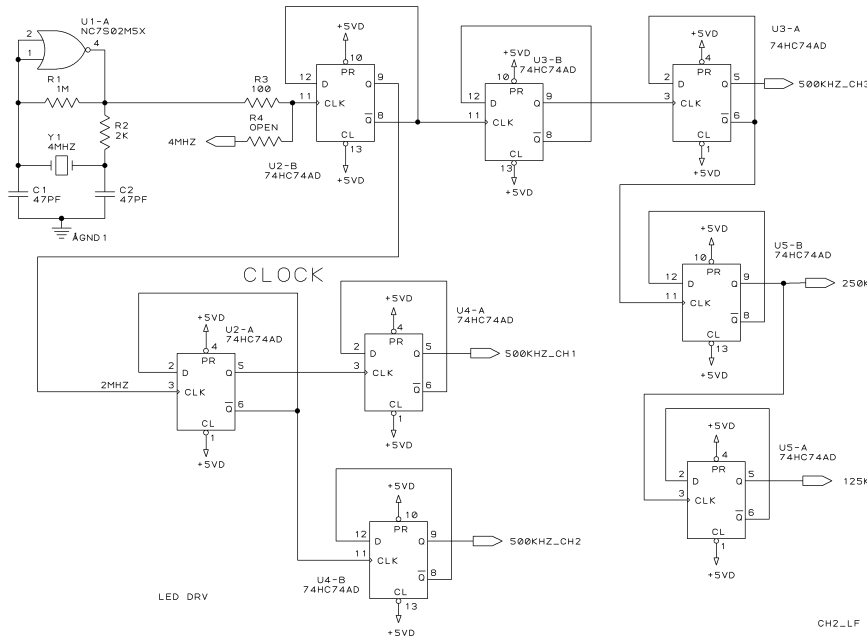
A

D

C

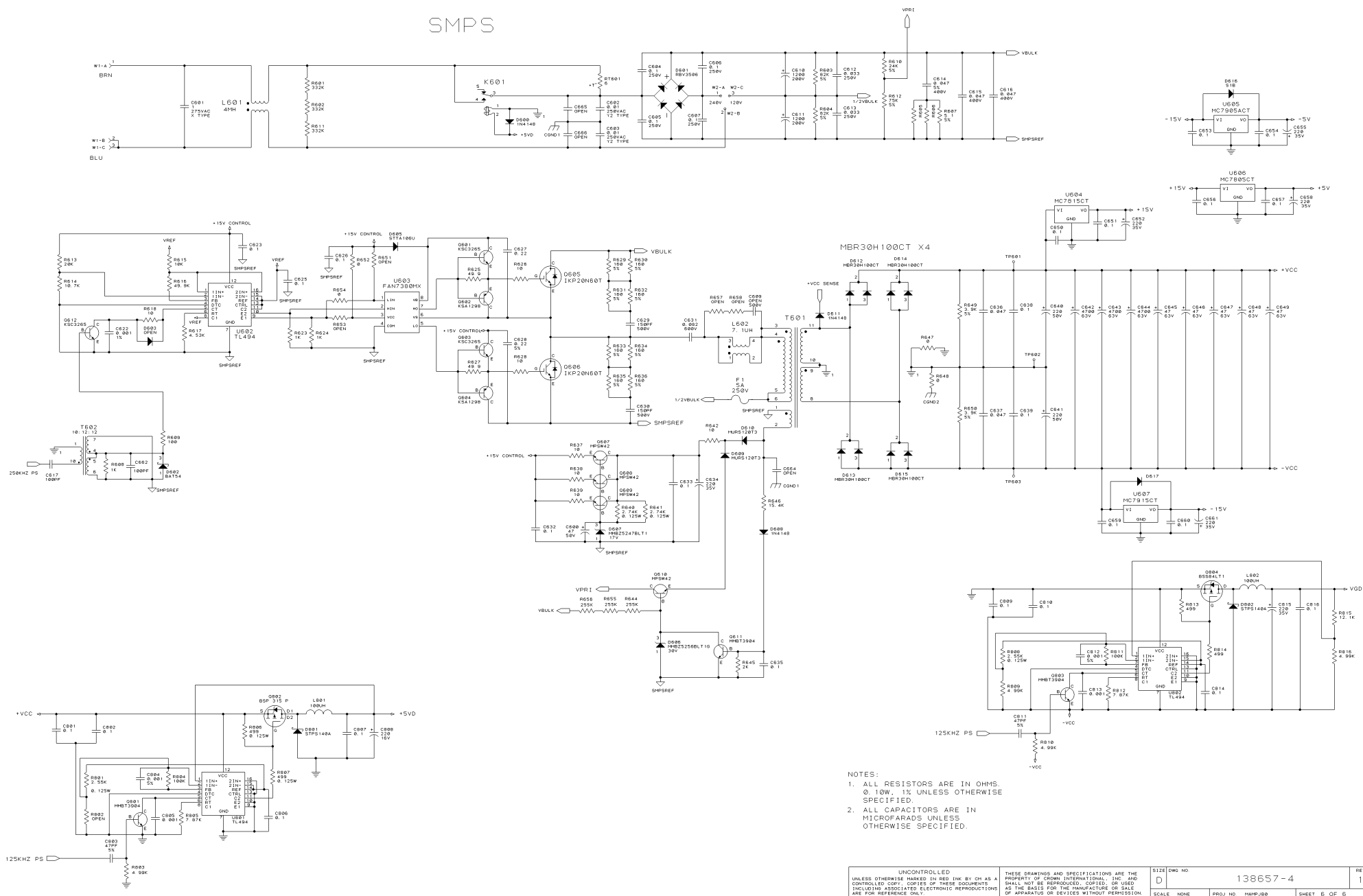
B

A



UNCONTROLLED UNLESS OTHERWISE MARKED IN RED INK BY CH AS A CONTROLLED COPY, COPIES OF THESE DOCUMENTS INCLUDING ASSOCIATED ELECTRONIC REPRODUCTIONS ARE FOR REFERENCE ONLY.		THESE DRAWINGS AND SPECIFICATIONS ARE THE PROPERTY OF CROWN INTERNATIONAL, INC. AND SHALL NOT BE REPRODUCED, COPIED, OR USED AS THE BASIS FOR THE MANUFACTURE OR SALE OF APPARATUS OR DEVICES WITHOUT PERMISSION.		SIZE C	DWG NO. 138657-4	REV 1
SCALE NONE		PROJ NO. MAMPJ00		SHEET 5 OF 6		

SMPS

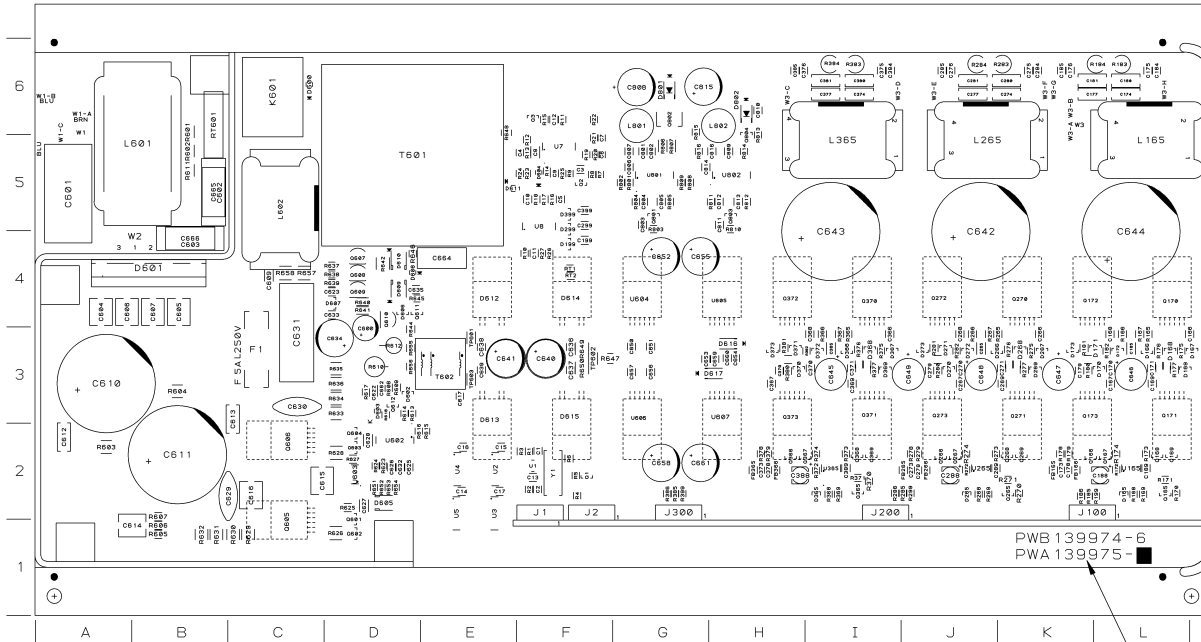


- NOTES:
1. ALL RESISTORS ARE IN OHMS.
@ 10W, 1% UNLESS OTHERWISE SPECIFIED
 2. ALL CAPACITORS ARE IN MICROFARADS UNLESS OTHERWISE SPECIFIED.

UNCONTROLLED UNLESS OTHERWISE MARKED IN RED INK BY OR AS A CONTROLLED COPY. COPIES OF THESE DOCUMENTS INCLUDING ASSOCIATED ELECTRONIC REPRODUCTIONS ARE FOR REFERENCE ONLY.		THESE DRAWINGS AND SPECIFICATIONS ARE THE PROPERTY OF CROWN INTERNATIONAL, INC. AND SHALL NOT BE REPRODUCED, COPIED, OR USED AS THE BASIS FOR THE MANUFACTURE OR SALE OF APPARATUS OR DEVICES WITHOUT PERMISSION.		SIZE D	DWG NO 138657-4	REV 1
SCALE	NONE	PROJ. NO.	MAMP-000	SHEET 6 OF 6		

REVISION HISTORY					
E. C. N.	ZONE	REV	DESCRIPTION	DATE	APPROVED
					DWN CM PE
		1	SEE 138657-4_1.XLS FOR COMPONENT DATA AND REVISION HISTORY.	04-13-10	TRW EB

COMPONENT MAP



ALL TO220
PACKAGES
ARE MOUNTED
TO THE BOTTOM
OF THE BOARD

PWB 139974 - 6
PWA 139975 - 6

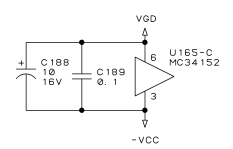
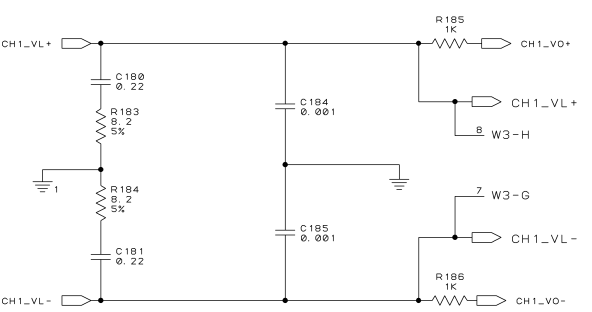
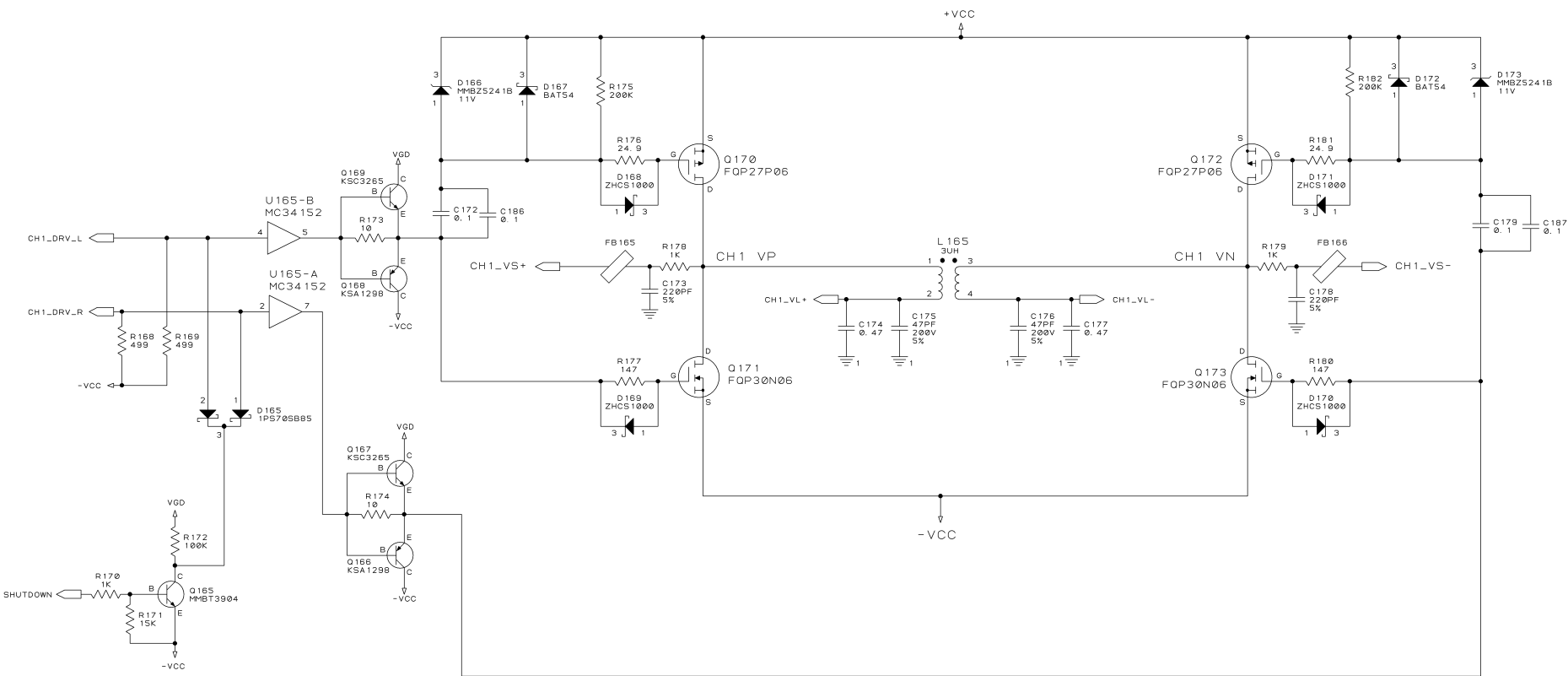
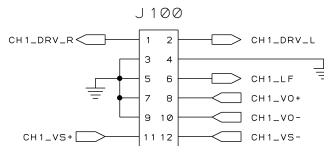
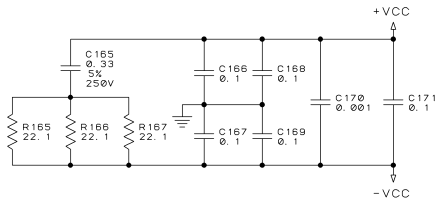
CROSS OUT AND MARK
PWA 138657-2

UNCONTROLLED
UNLESS OTHERWISE MARKED IN RED INK BY CM AS A
CONTROLLED COPY. COPIES OF THESE DOCUMENTS
INCLUDING ASSOCIATED ELECTRONIC REPRODUCTIONS
ARE FOR REFERENCE ONLY. VERIFY LATEST
REVISION PRIOR TO USE.

THESE DRAWINGS AND SPECIFICATIONS ARE THE
PROPERTY OF CROWN INTERNATIONAL, INC. AND
SHALL NOT BE REPRODUCED, COPIED, OR USED
AS THE BASIS FOR THE MANUFACTURE OR SALE
OF APPARATUS OR DEVICES WITHOUT PERMISSION.

DISTRIBUTION	DWN	TRW	04-13-10	 1718 W. MISHAWAKA RD. ELKHART IN, 46517 PHONE 317-434-5000 WWW.CROWNAUDIO.COM
FILENAME	CM	PE	04-13-10	
TOLERANCE UNLESS OTHERWISE SPECIFIED				TITLE
DO NOT SCALE DRAWING				PWA, PRX600 3CH MAIN
				SIZE DWG NO. 138657-4
				SCALE NONE PROJ NO. PRXVP SHEET 1 OF 6
				REV 1

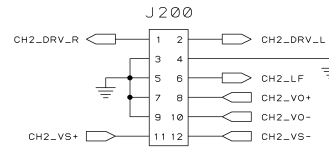
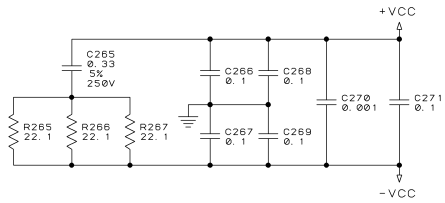
POWER SUPPLY FILTERING



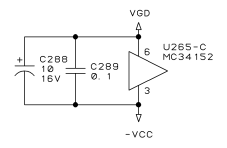
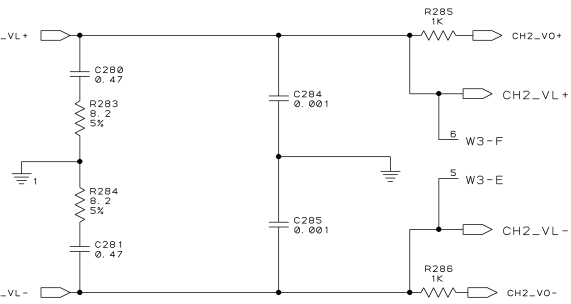
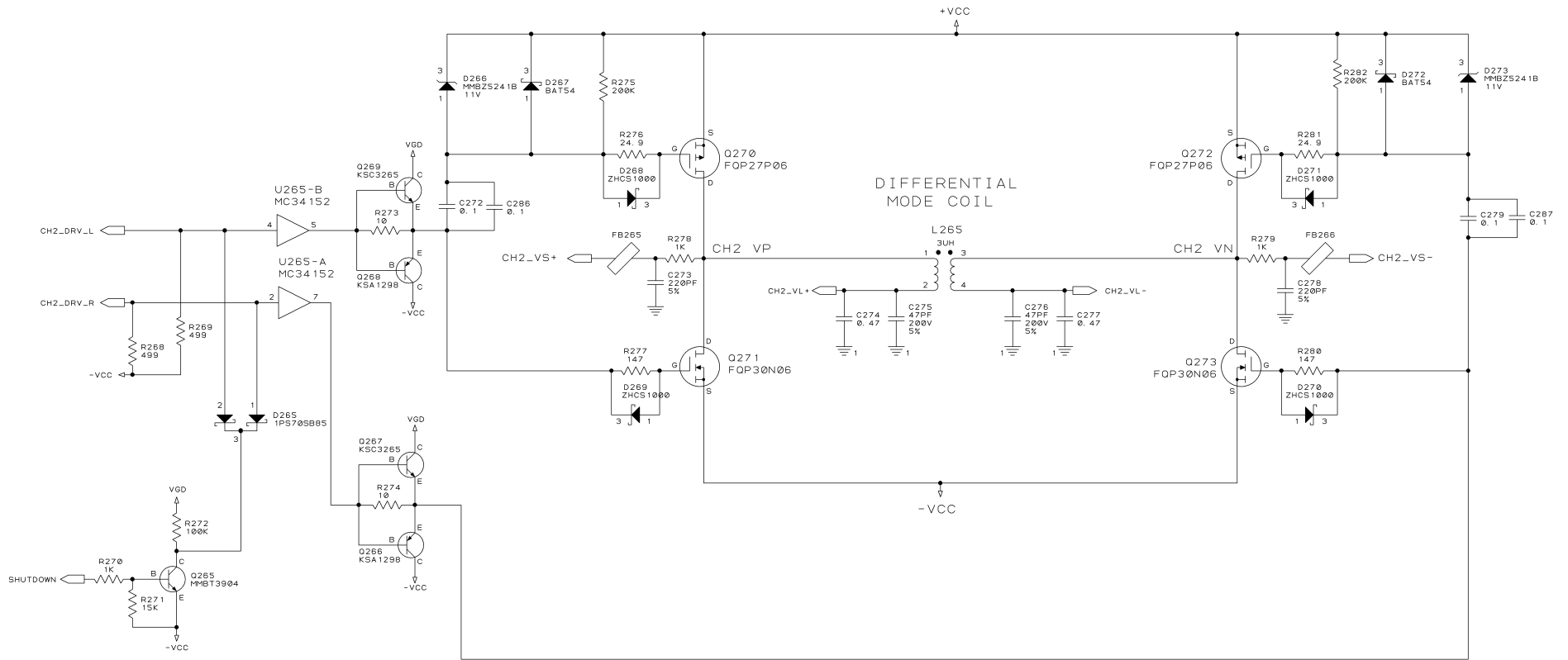
CH1 OUTPUT

UNCONTROLLED UNLESS OTHERWISE MARKED IN RED INK BY CH AS A CONTROLLED COPY. COPIES OF THESE DOCUMENTS INCLUDING ASSOCIATED ELECTRONIC REPRODUCTIONS ARE FOR REFERENCE ONLY.		THESE DRAWINGS AND SPECIFICATIONS ARE THE PROPERTY OF CROWN INTERNATIONAL, INC. AND SHALL NOT BE REPRODUCED, COPIED, OR USED AS THE BASIS FOR THE MANUFACTURE OR SALE OF APPARATUS OR DEVICES WITHOUT PERMISSION.		SIZE C	DWG NO. 138657-4	REV 1
SCALE NONE		PROJ NO. MAMPJ00		SHEET 2 OF 6		

POWER SUPPLY FILTERING



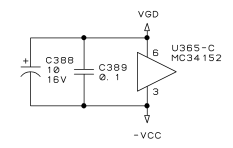
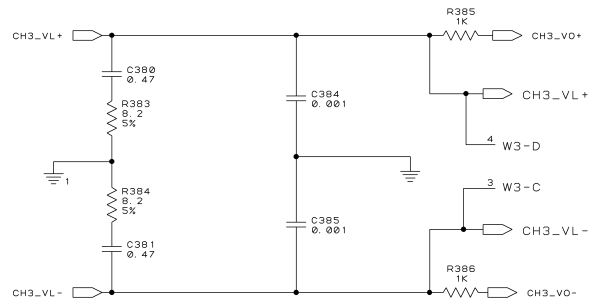
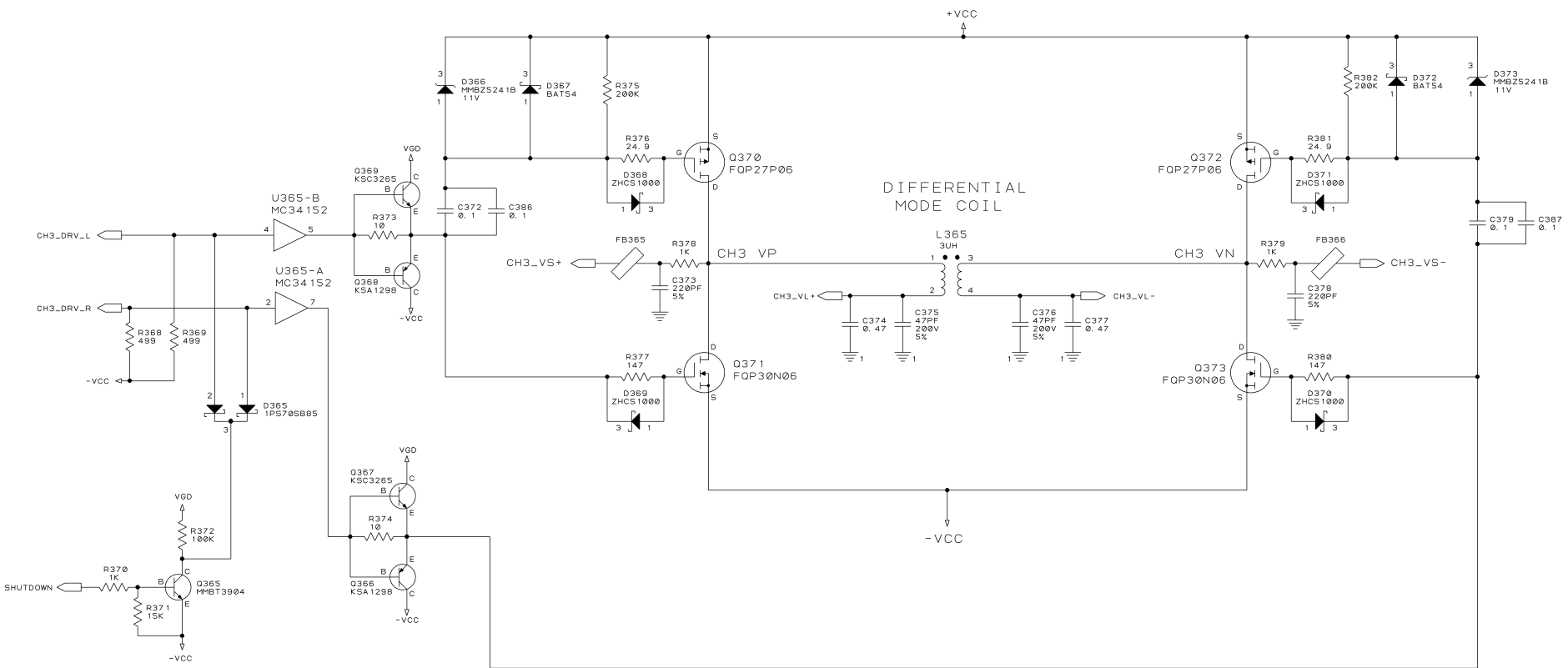
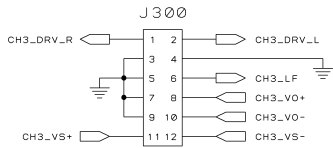
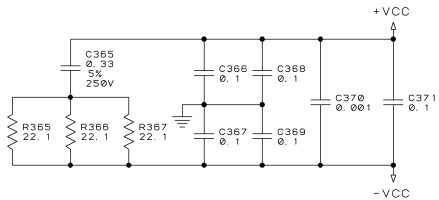
DIFFERENTIAL MODE COIL



CH2 OUTPUT

UNCONTROLLED UNLESS OTHERWISE MARKED IN RED INK BY CH AS A CONTROLLED COPY. COPIES OF THESE DOCUMENTS INCLUDING ASSOCIATED ELECTRONIC REPRODUCTIONS ARE FOR REFERENCE ONLY.		THESE DRAWINGS AND SPECIFICATIONS ARE THE PROPERTY OF CROWN INTERNATIONAL, INC. AND SHALL NOT BE REPRODUCED, COPIED, OR USED AS THE BASIS FOR THE MANUFACTURE OR SALE OF APPARATUS OR DEVICES WITHOUT PERMISSION.		SIZE C	DWG NO. 138657-4	REV 1
SCALE NONE		PROJ NO. MAMPJ80		SHEET 3 OF 6		

POWER SUPPLY FILTERING



CH3 OUTPUT

UNCONTROLLED UNLESS OTHERWISE MARKED IN RED INK BY CH AS A CONTROLLED COPY. COPIES OF THESE DOCUMENTS INCLUDING ASSOCIATED ELECTRONIC REPRODUCTIONS ARE FOR REFERENCE ONLY.		THESE DRAWINGS AND SPECIFICATIONS ARE THE PROPERTY OF CROWN INTERNATIONAL, INC. AND SHALL NOT BE REPRODUCED, COPIED, OR USED AS THE BASIS FOR THE MANUFACTURE OR SALE OF APPARATUS OR DEVICES WITHOUT PERMISSION.		SIZE C	DWG NO. 138657-4	REV 1
SCALE NONE		PROJ NO. MAMPJ80		SHEET 4 OF 6		

D

C

B

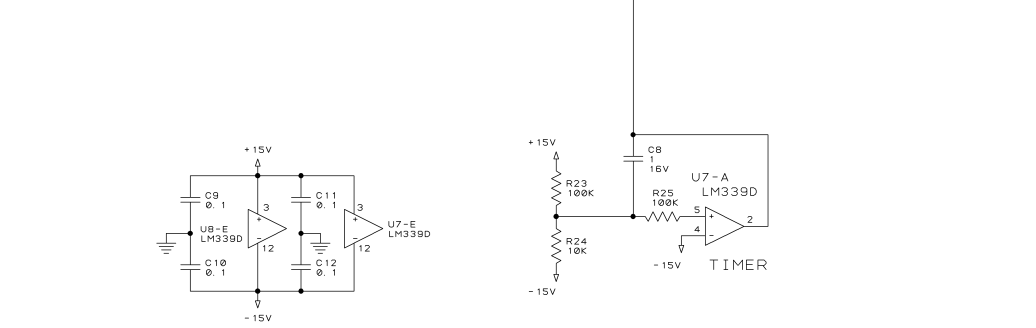
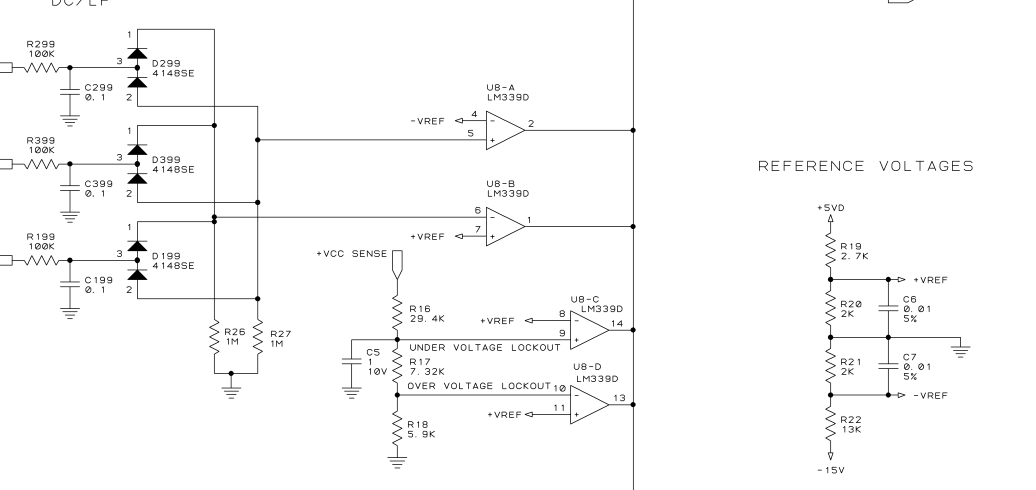
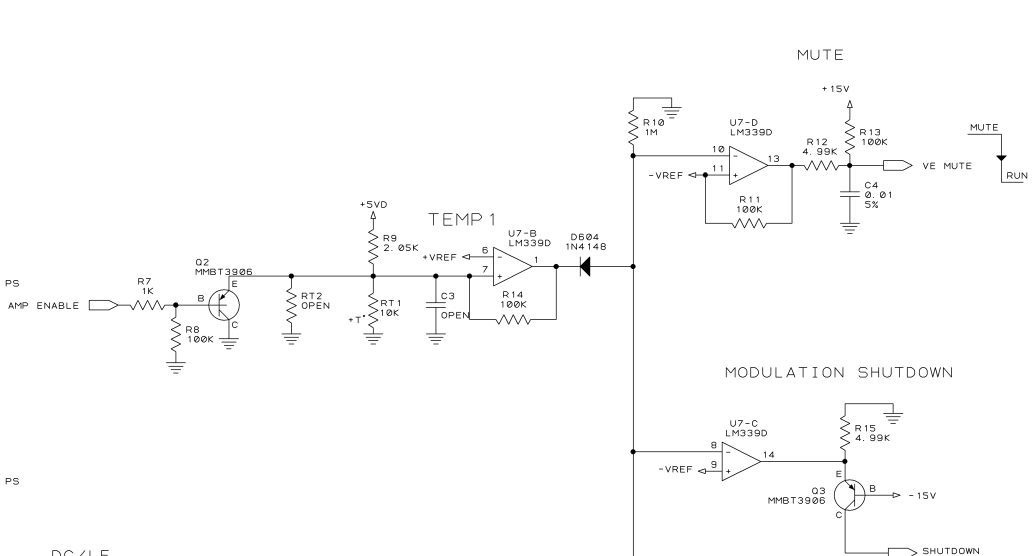
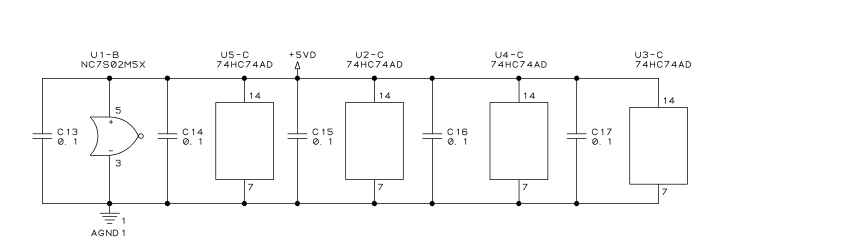
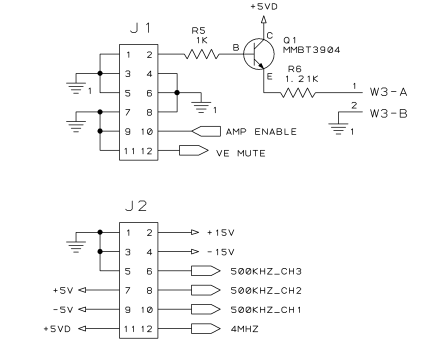
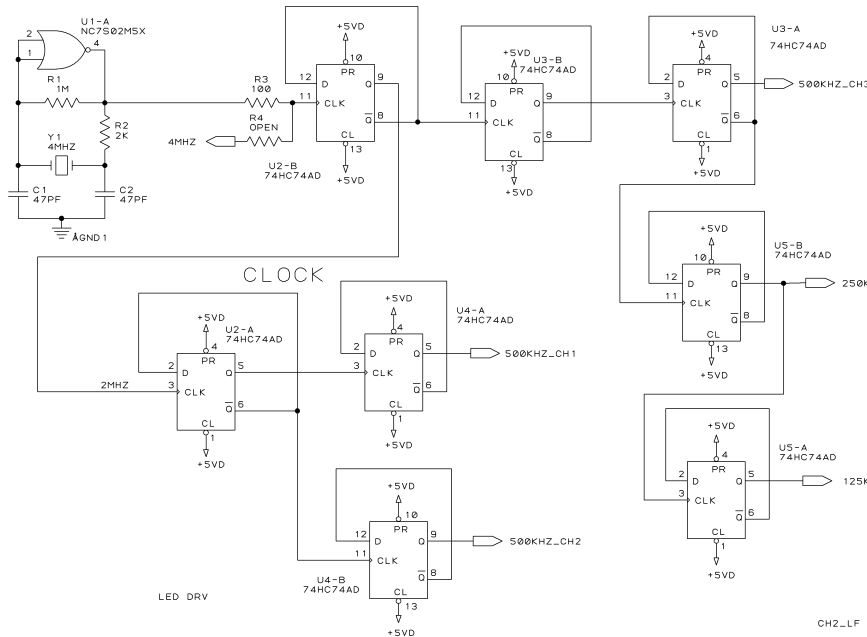
A

D

C

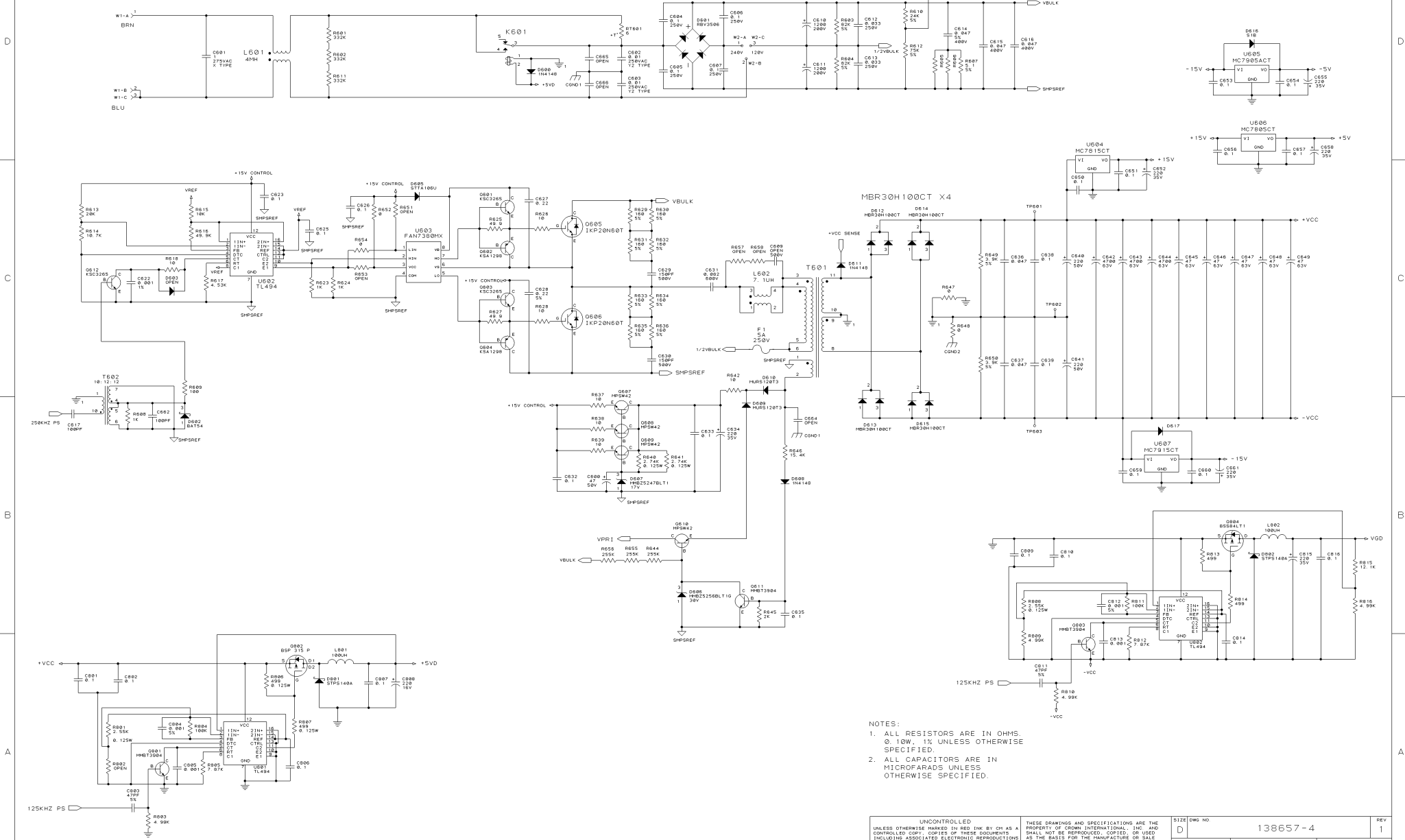
B

A



UNCONTROLLED UNLESS OTHERWISE MARKED IN RED INK BY CH AS A CONTROLLED COPY, COPIES OF THESE DOCUMENTS INCLUDING ASSOCIATED ELECTRONIC REPRODUCTIONS ARE FOR REFERENCE ONLY.		THESE DRAWINGS AND SPECIFICATIONS ARE THE PROPERTY OF CROWN INTERNATIONAL, INC. AND SHALL NOT BE REPRODUCED, COPIED, OR USED AS THE BASIS FOR THE MANUFACTURE OR SALE OF APPARATUS OR DEVICES WITHOUT PERMISSION.		SIZE C	DWG NO. 138657-4	REV 1
SCALE NONE		PROJ NO. MAMPJ00		SHEET 5 OF 6		

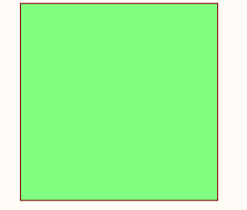
SMPS



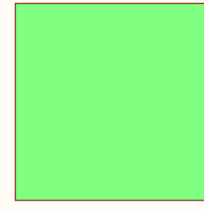
- NOTES:
1. ALL RESISTORS ARE IN OHMS.
@ 10W, 1% UNLESS OTHERWISE SPECIFIED.
 2. ALL CAPACITORS ARE IN MICROFARADS UNLESS OTHERWISE SPECIFIED.

UNCONTROLLED UNLESS OTHERWISE MARKED IN RED INK BY OR AS A CONTROLLED COPY. COPIES OF THESE DOCUMENTS INCLUDING ASSOCIATED ELECTRONIC REPRODUCTIONS ARE FOR REFERENCE ONLY.		THESE DRAWINGS AND SPECIFICATIONS ARE THE PROPERTY OF CROWN INTERNATIONAL, INC. AND SHALL NOT BE REPRODUCED, COPIED, OR USED AS THE BASIS FOR THE MANUFACTURE OR SALE OF APPARATUS OR DEVICES WITHOUT PERMISSION.		SIZE D	DWG NO 138657-4	REV 1
SCALE	NONE	PROJ. NO.	MAMP.00	SHEET 6 OF 6		

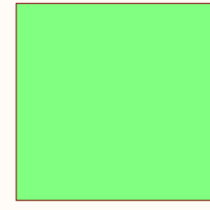
1



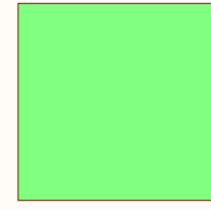
2



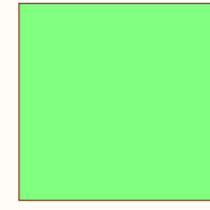
3



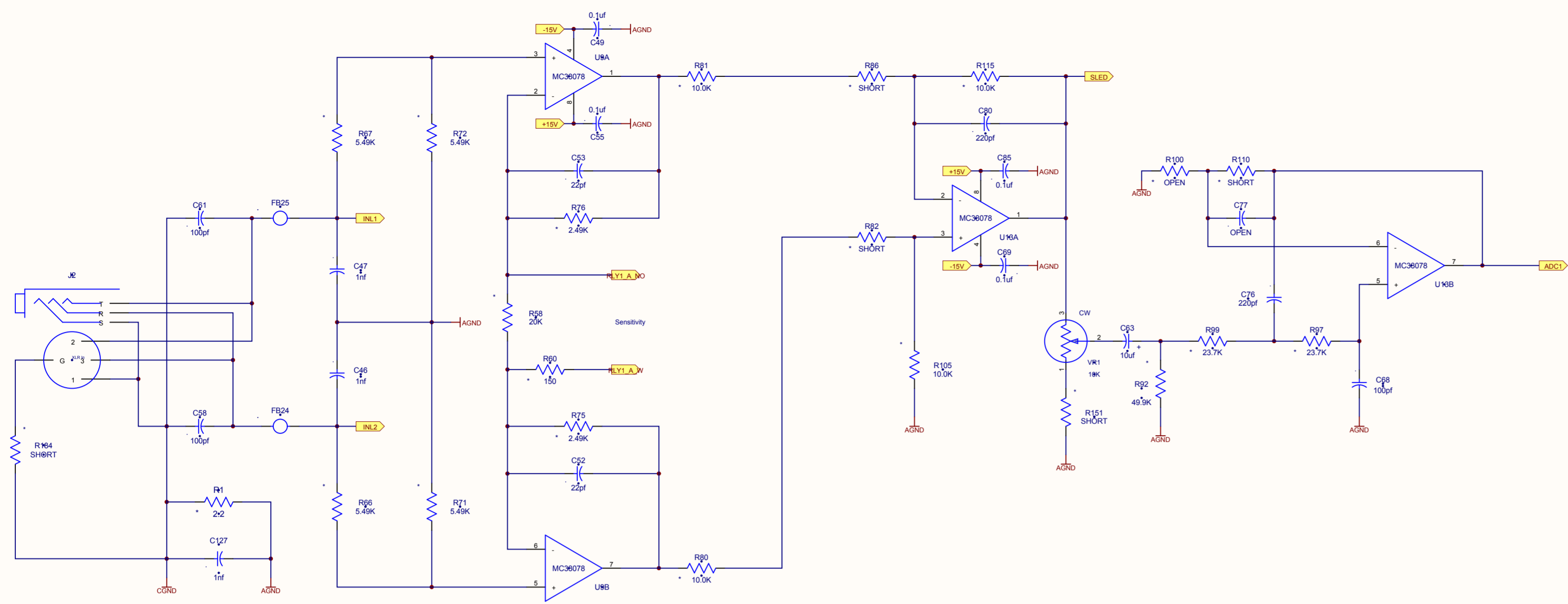
4



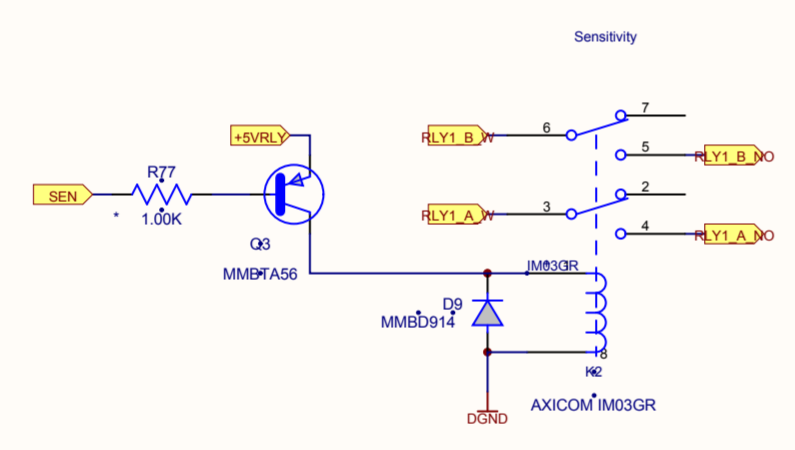
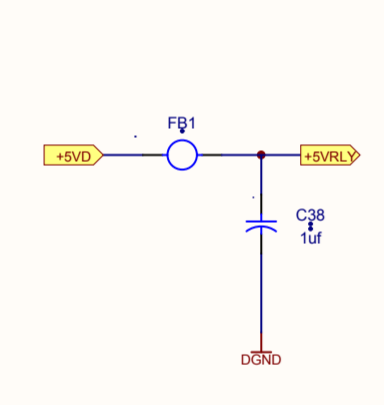
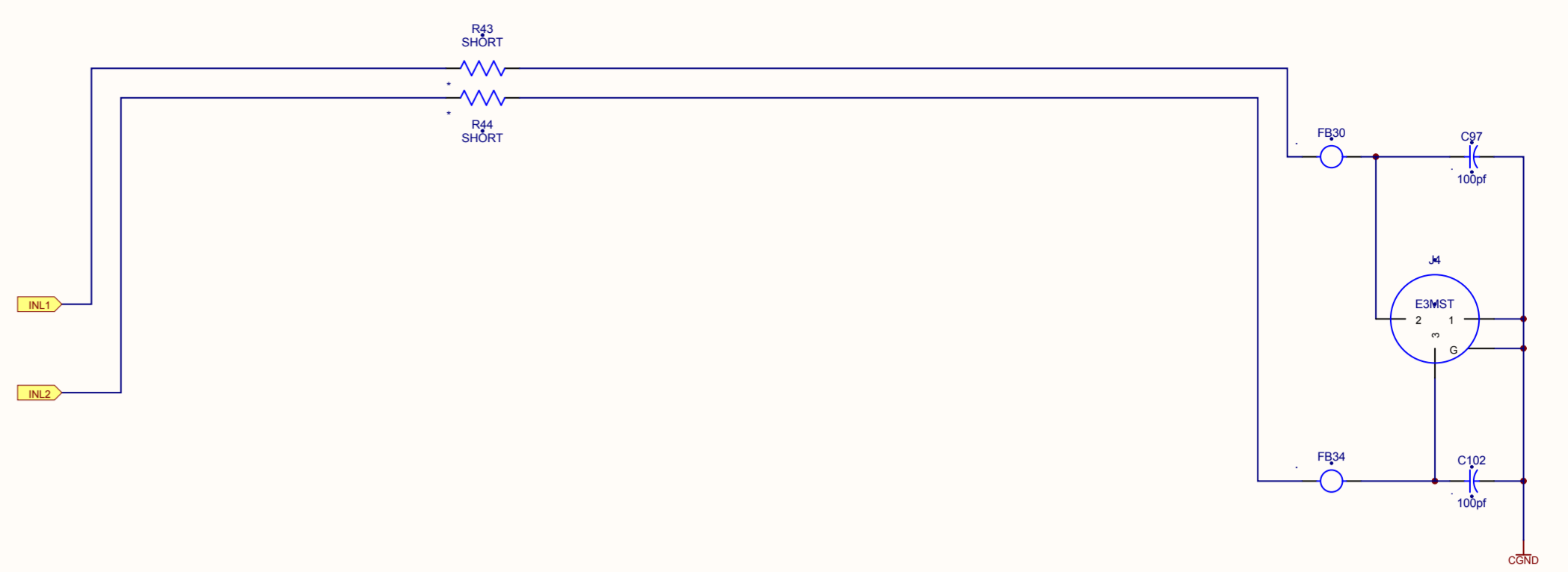
5



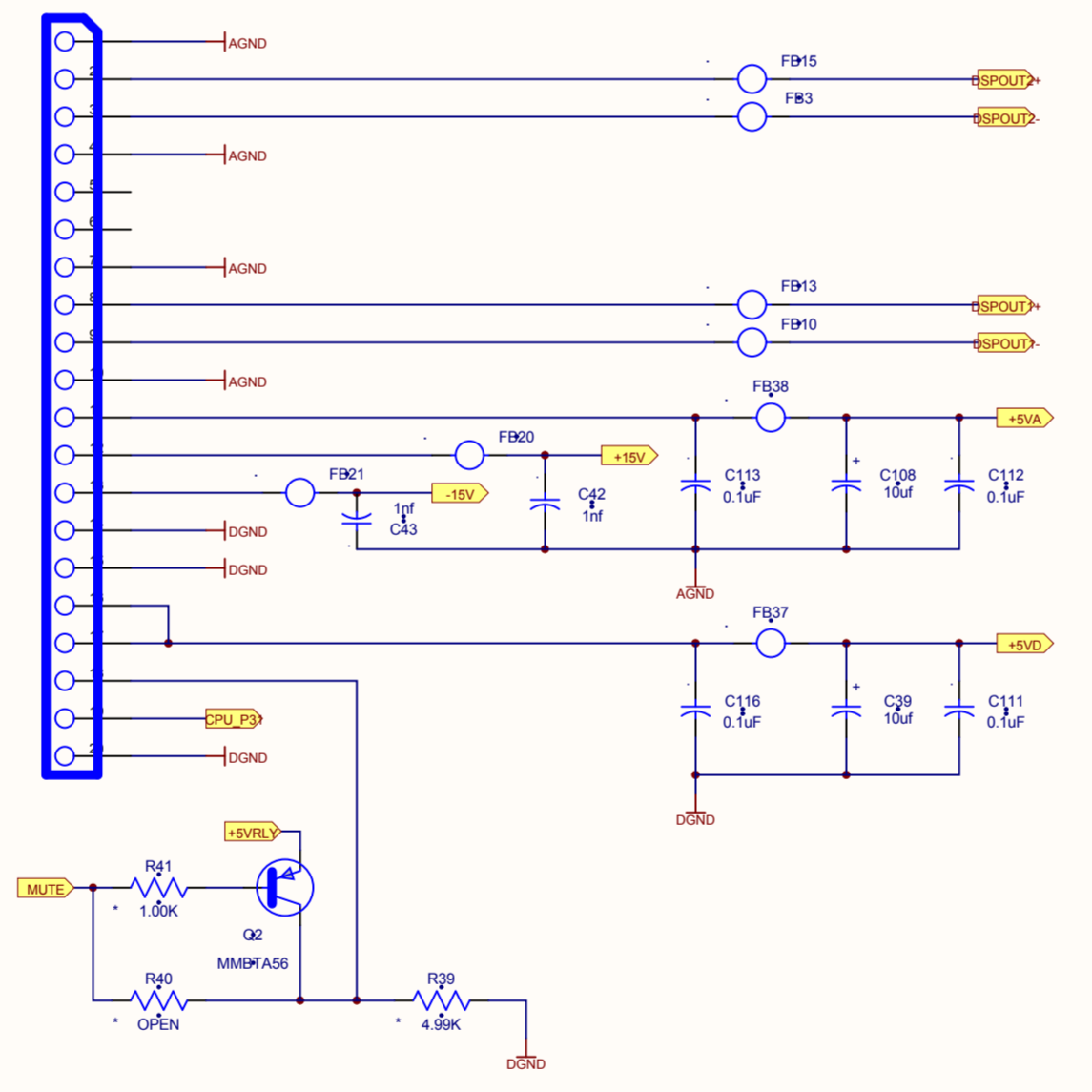
Title		
Size	Number	Revision
A		
Date	4/26/2010	Sheet of
File	C:\2010\1\unit_sheets\SCHDOC	Drawn By



Inputs

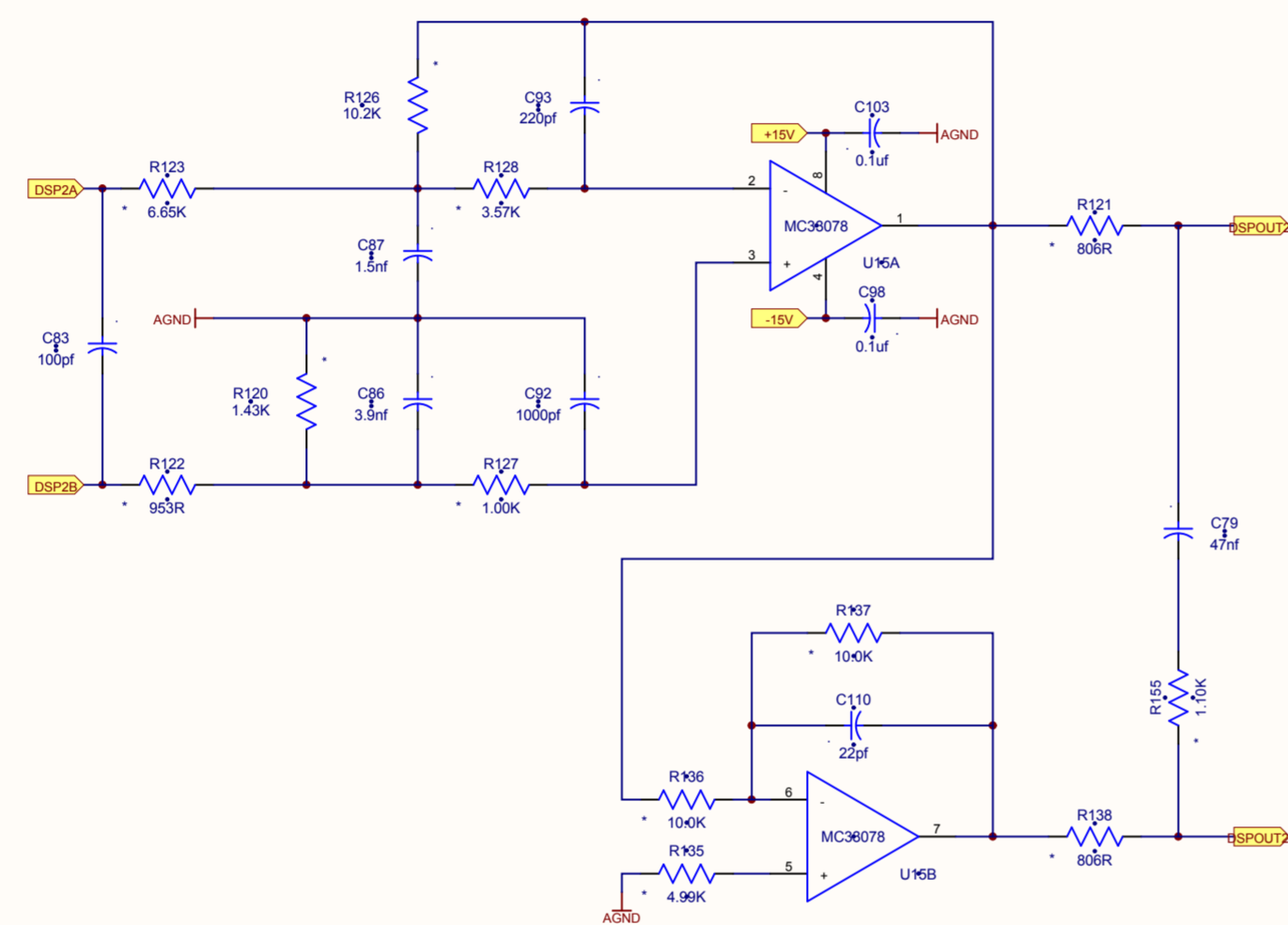
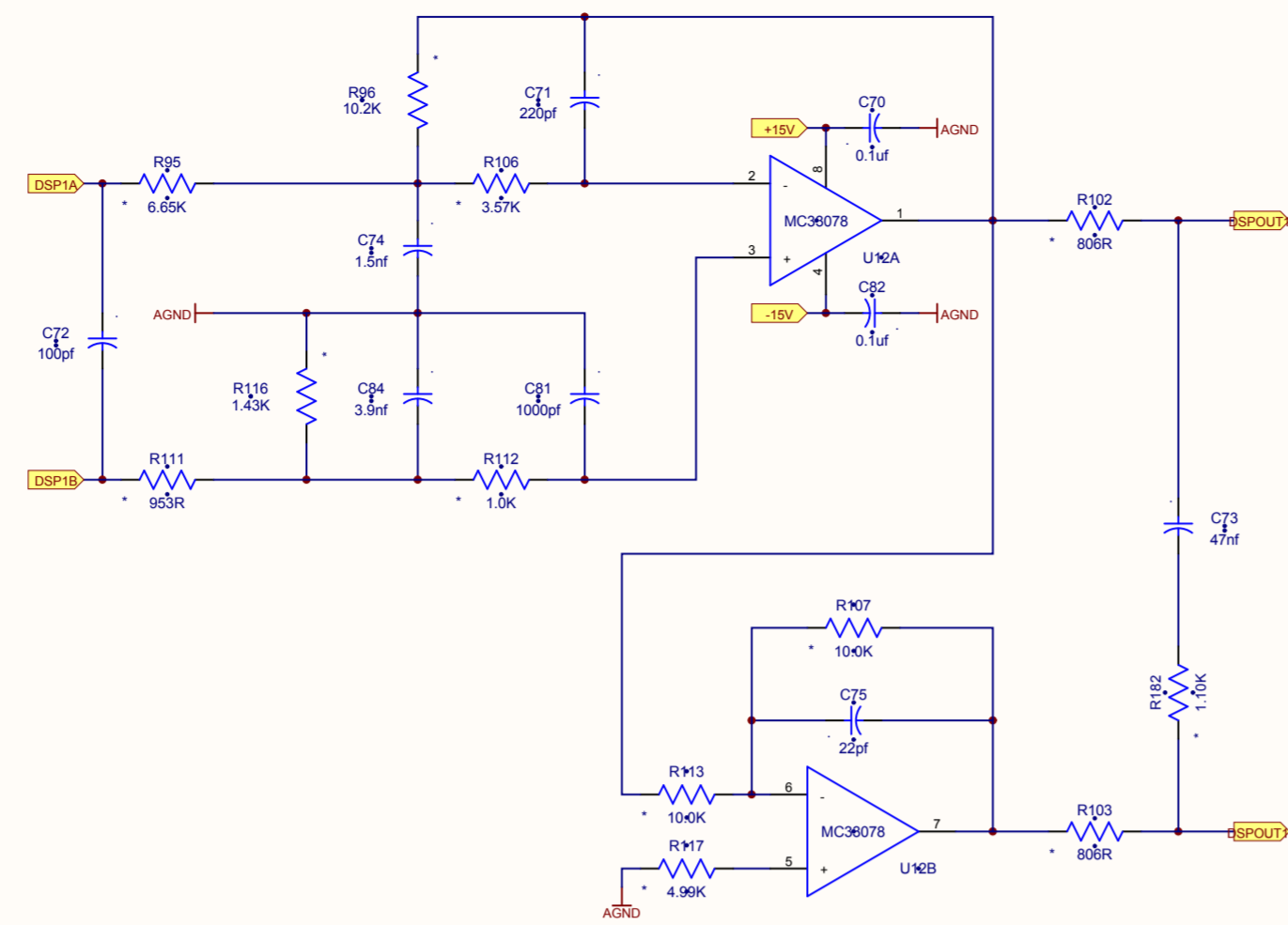


J10
AMP-CON



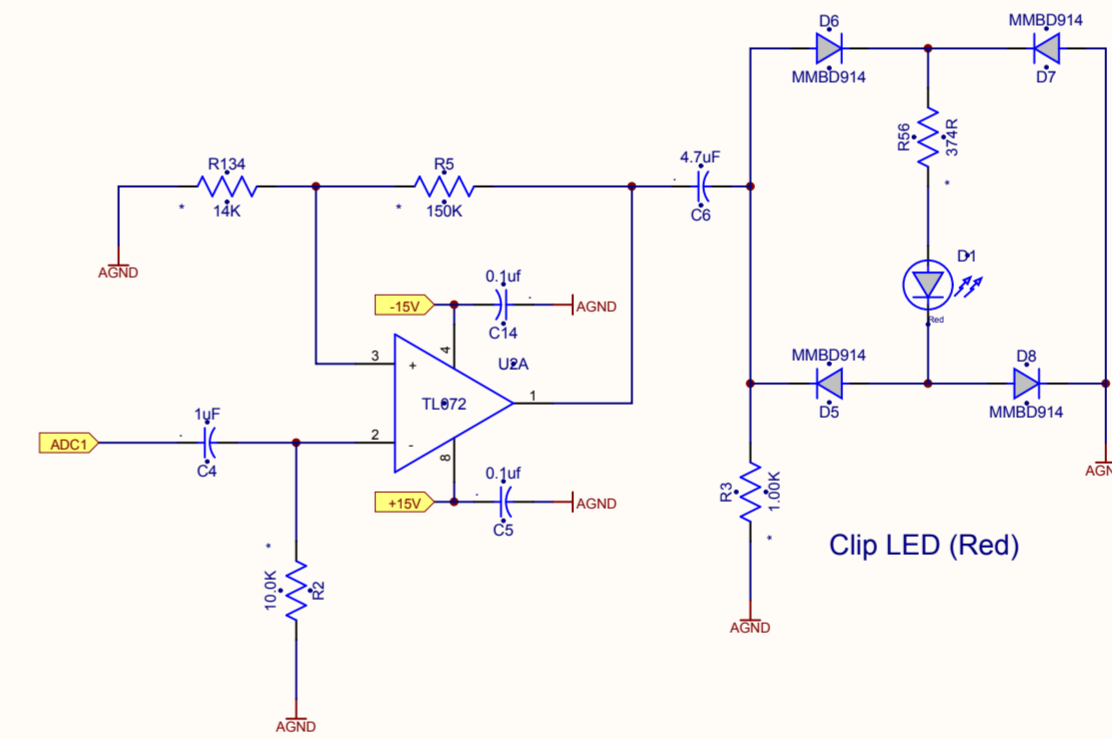
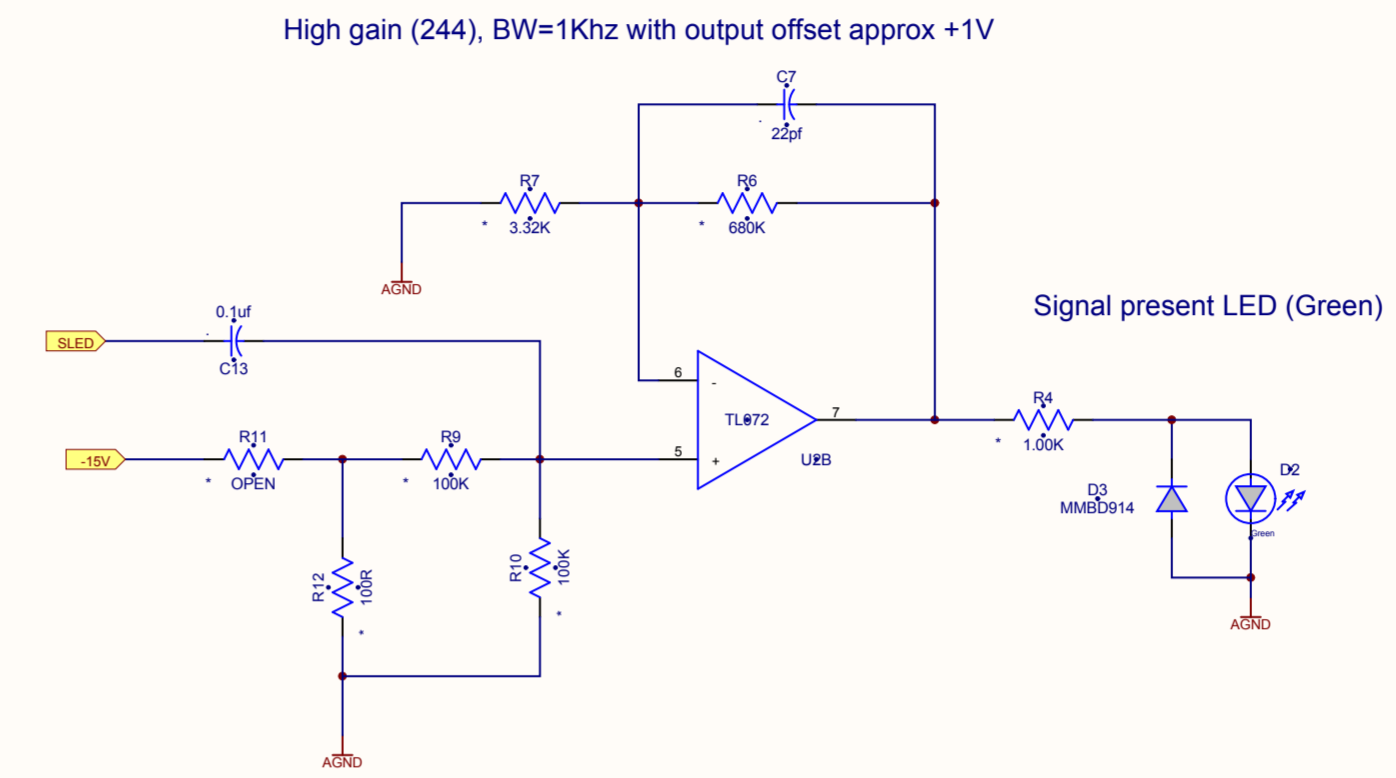
LF Channel
HF Channel

JBL Professional			
Title PRX 615			
Size D	Page Analog Input_Output.SCHDOC	Engineer Anthony & Wu	Rev A
Date December 14, 2009	Filename Analog Input_Output.SCHDOC	Sheet 1 of 5	

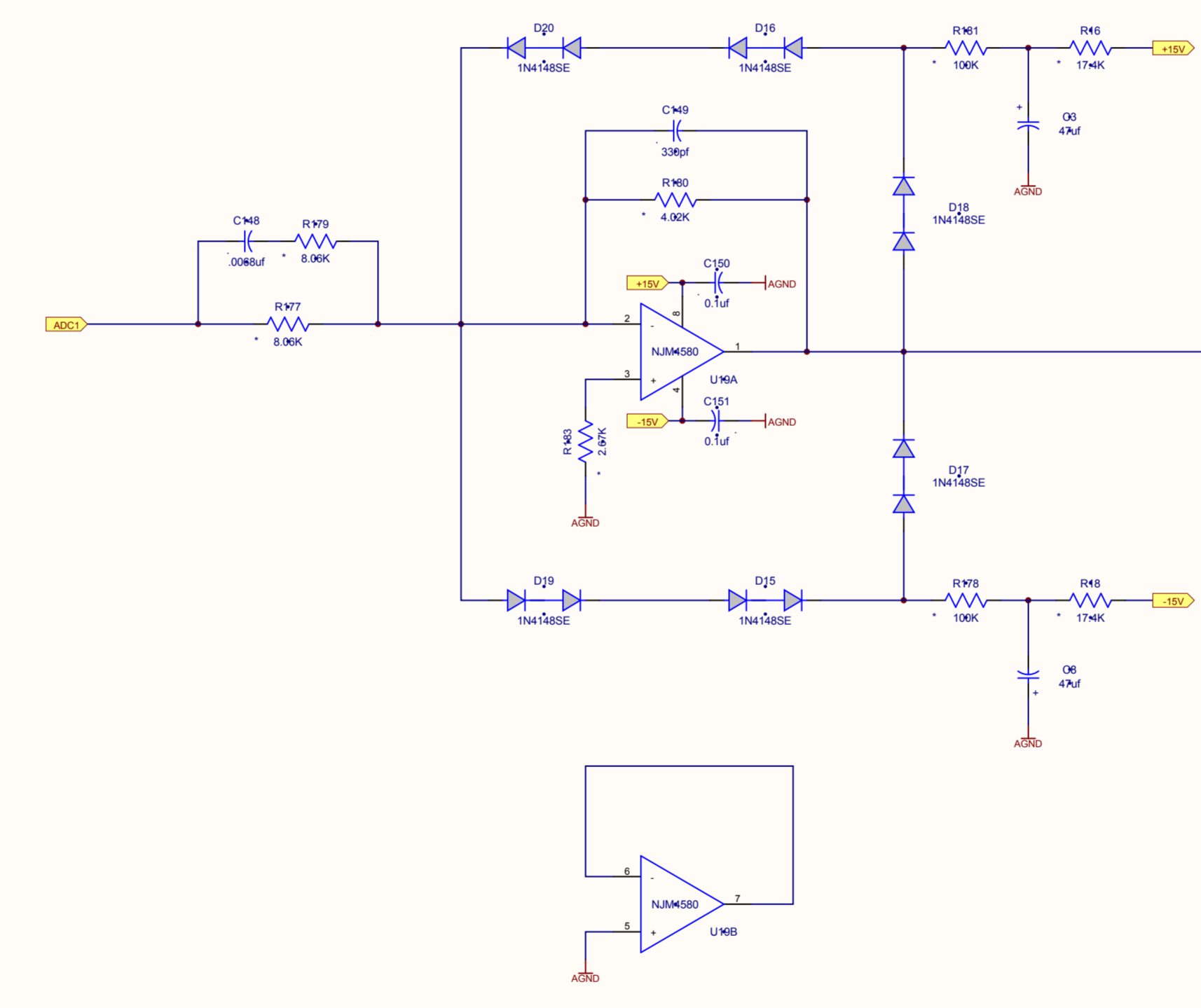
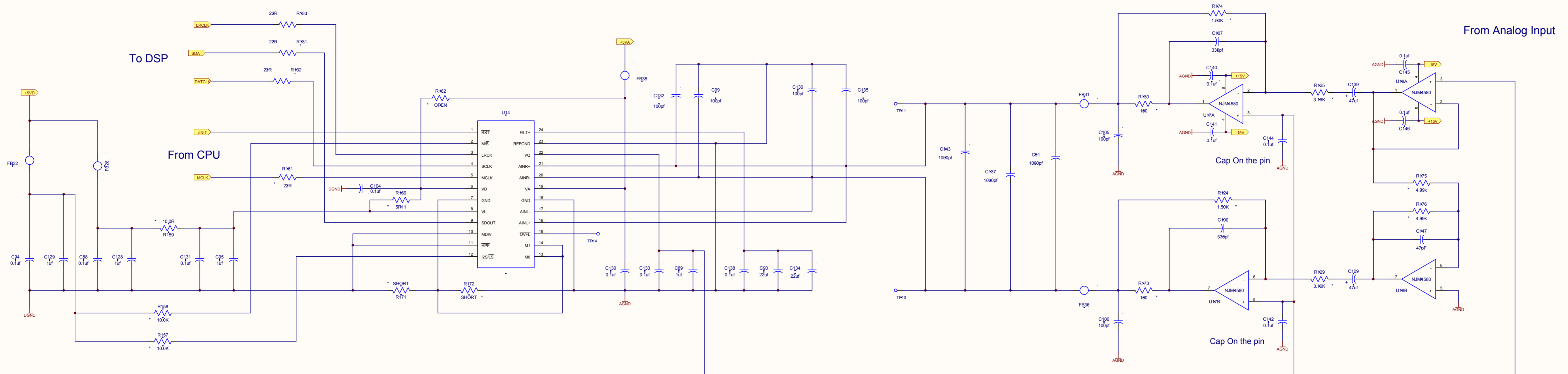


From DSP

To Connector

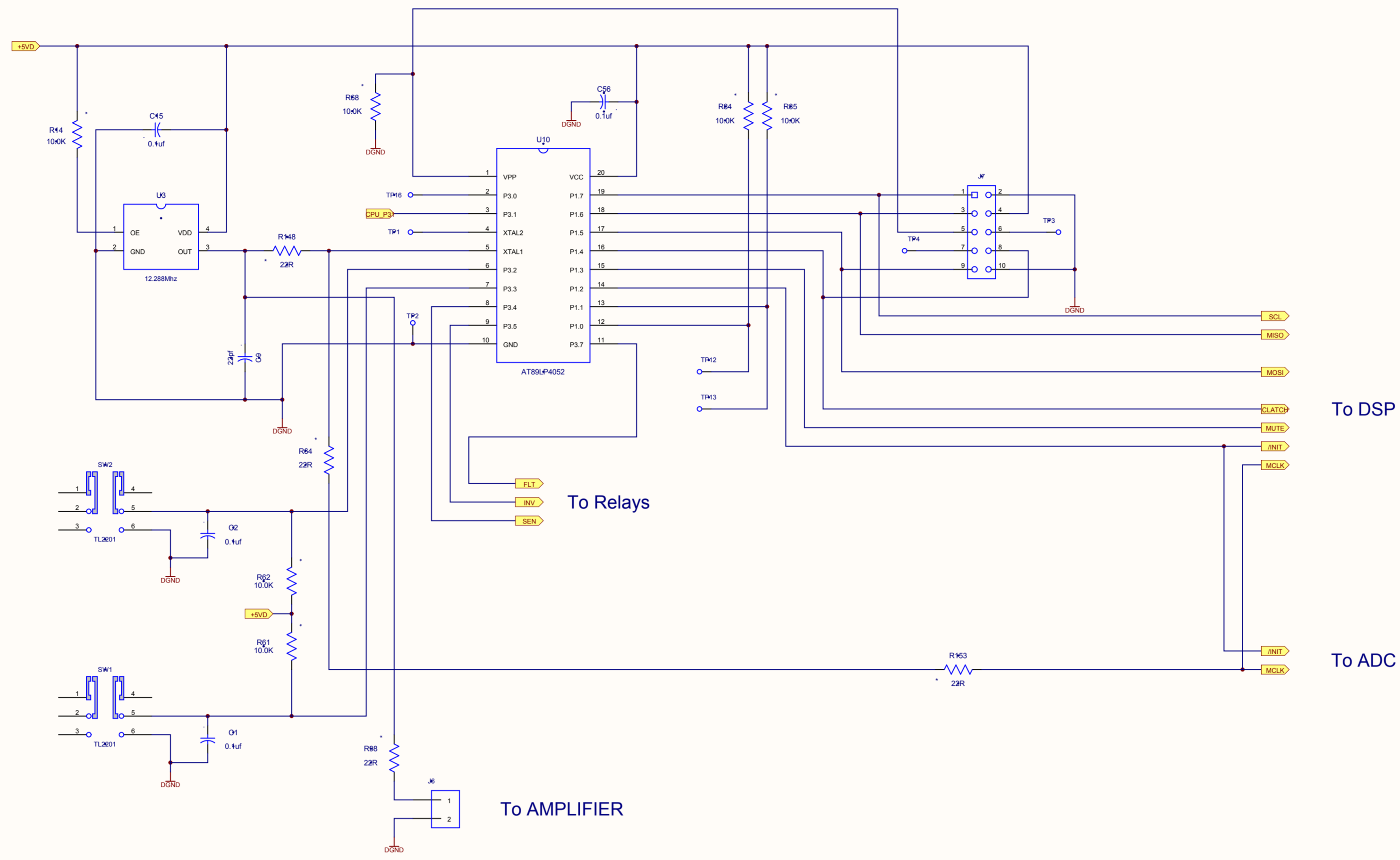


JBL Professional			
Title PRX 615			
Size D	Page Analog Filters.SCHDOC	Rev A	
Date December 14, 2009	Engineer Anthony & Wu		
Filename Analog Filters.SCHDOC	Sheet 2	of 5	

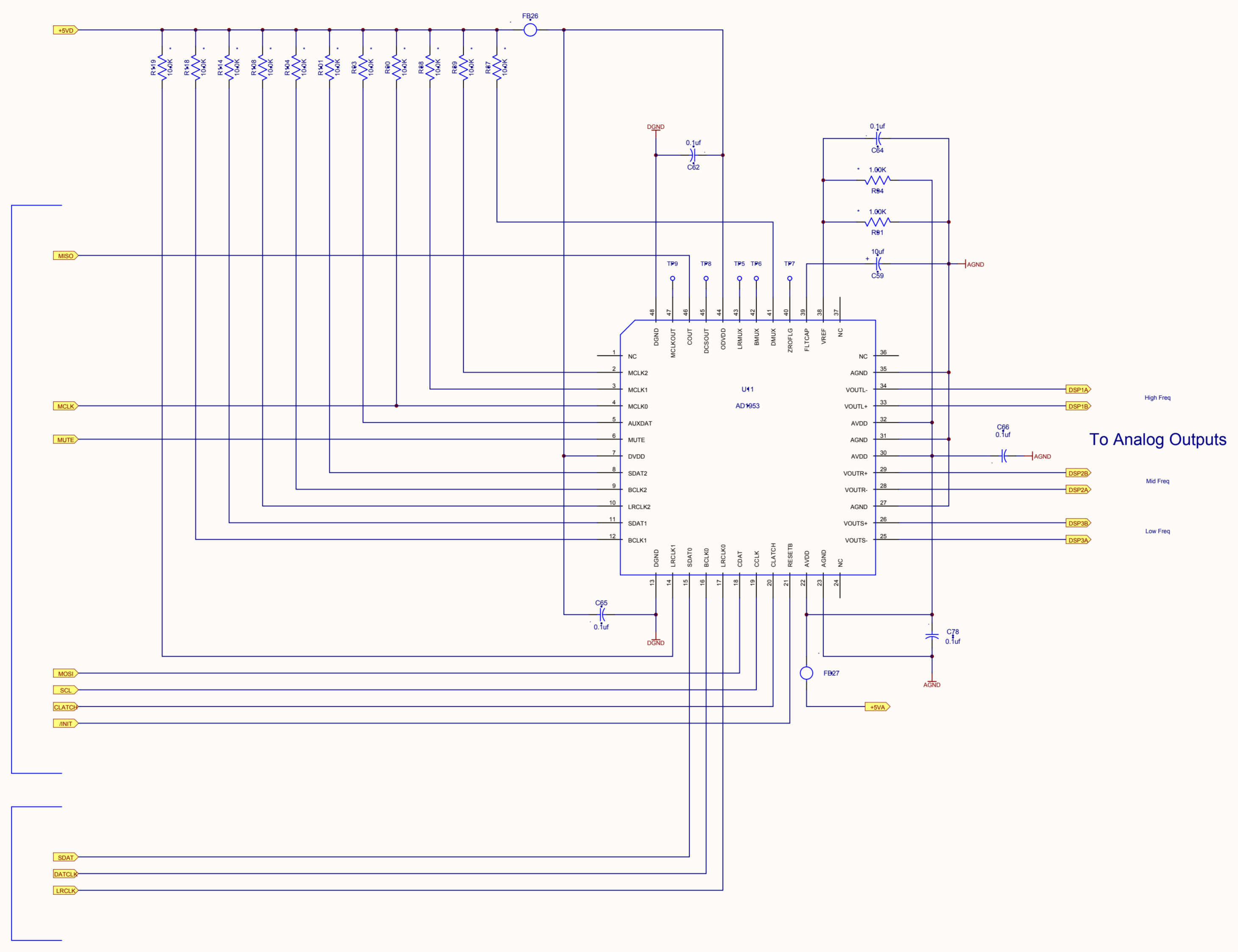


From Analog Input

JBL Professional			
Title PRX 615			
Size D	Page ADC.SCHDOC	Rev A	Engineer Anthony & Wu
Date December 14, 2009	Filename ADC.SCHDOC	Sheet 3 of 5	



JBL Professional			
Title PRX 615			
Size D	Page	CPU.SCHDOC	Rev A
Date	December 14, 2009	Engineer	Anthony & Wu
Filename	CPU.SCHDOC	Sheet	4 of 5



From CPU

From ADC

To Analog Outputs

JBL Professional			
Title PRX 615			
Size D	Page DSP.SCHDOC	Engineer Anthony & Wu	Rev A
Date December 14, 2009	Sheet 5 of 5		Filename DSP.SCHDOC

Technical Manual



JBL PRX615M/230

SPECIFICATIONS

ACOUSTIC & ELECTRICAL SPECIFICATIONS:

- Frequency Response (± 3 dB):
 - Full Range: 54 Hz – 18 kHz
 - Monitor (vertical orientation): 75 Hz – 18.5 kHz
 - Monitor (monitor orientation): 60 Hz – 18 kHz
- Frequency Range (-10 dB):
 - Full Range: 45 Hz – 19 kHz
 - Monitor (vertical orientation): 55 Hz – 19 kHz
 - Monitor (monitor orientation): 48 Hz - 20 kHz
- Maximum SPL Output: 135 dB (Full Range) peak; 134 dB (Monitor) peak
- Input Impedance: 20K Ohms (balanced), 10K Ohms (unbalanced)
- Crossover Frequency: 1.8 kHz

SYSTEM COMPONENTS:

- Cabinet: Enclosure (Not For Sale)
- Grille: 444773-002
- Low Frequency Driver: 265F-1, 380 mm (15 in) Differential Drive® dual voice-coil and magnet gap, neodymium woofer
- D.C. Resistance: 1.35 ohm +/- 10%
- High Frequency Driver: 2408H-1, 37.5 mm (1.5 in)

SYSTEM COMPONENTS: (CONT'D)

- annular polymer diaphragm, neodymium compression driver
- D.C. Resistance: 4.80 ohm +/- 0.2 ohm
- AURAL SWEEP TEST SPECIFICATIONS:**
- A. System. Aural Sweep Test: 0.2V Input, 50 Hz Input, 20 kHz Knob Fully CW. Line In and Main
- B. L.F. Aural Sweep Test: 3.5V Input, 10 Hz to 300 Hz
- C. H.F. Aural Sweep Test: 0.75V Input, 200 Hz to 1.5 kHz

PHYSICAL SPECIFICATIONS:

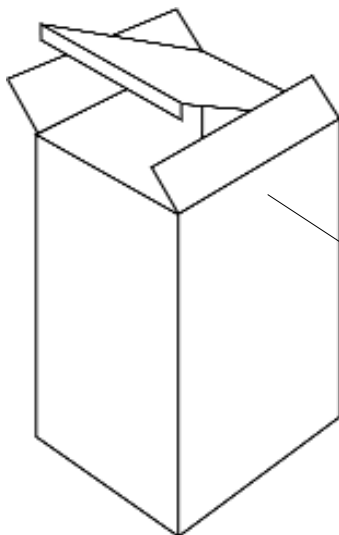
- Enclosure Dimensions: 660 x 429 x 414 mm D (26 x 16.9 x 16.3 in. D)
- Net Weight: 43.5 lb (19.7 kg)

WARRANTY INFORMATION:

- Refer to Warranty Statement packed with each product.

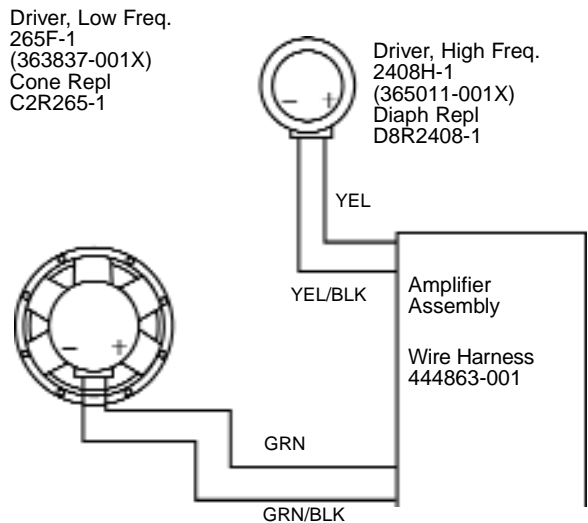
PACKAGE

Warranty Card
59660



- Manual 444833-001
- Carton 444861-001
- Filler 444862-001
- Filler, Bottom 444862-002
- PKG, Microfoam (4) 49790P
- Cord, AC, Line 425-00000-00 (120V)
425-00000-01 (230V)

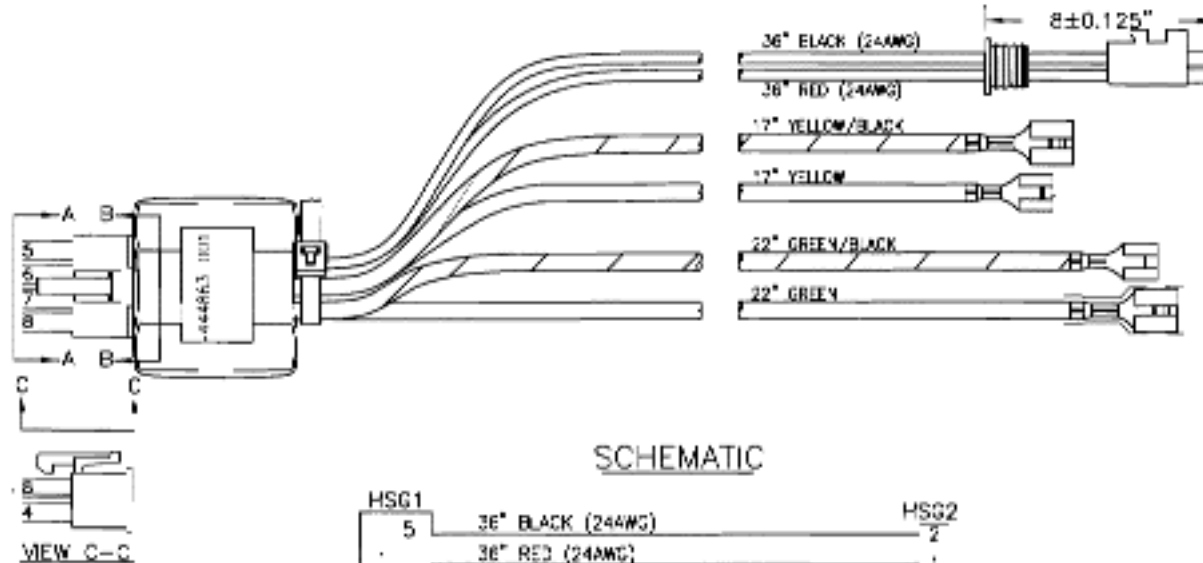
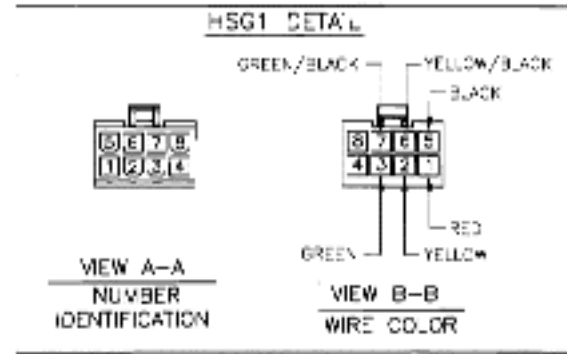
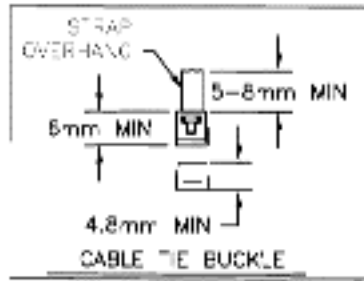
WIRING DIAGRAM



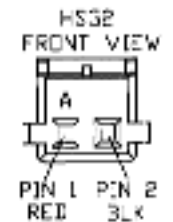
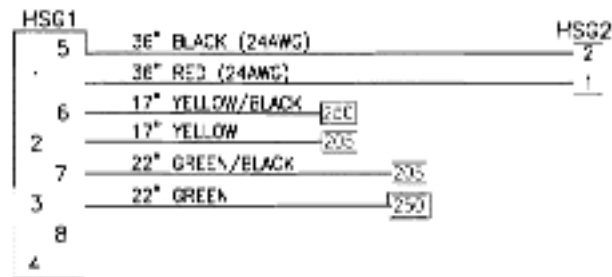
JBL PRX615M/230

SCHEMATIC DIAGRAM (444832-001)

Wire Harness Assembly

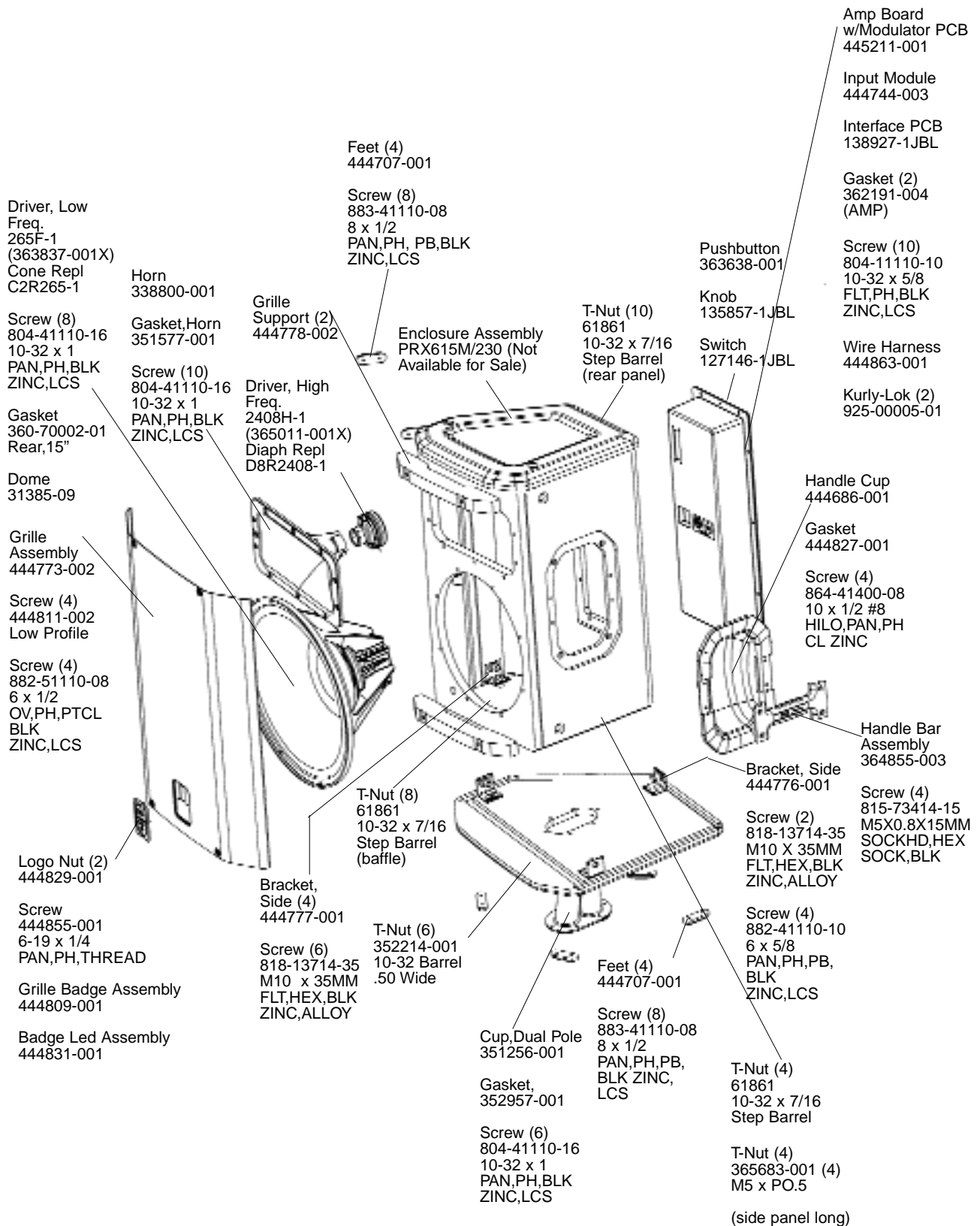


SCHEMATIC



JBL PRX615M/230

COMPONENT EXPLODED VIEW



JBL PRX615M/230