

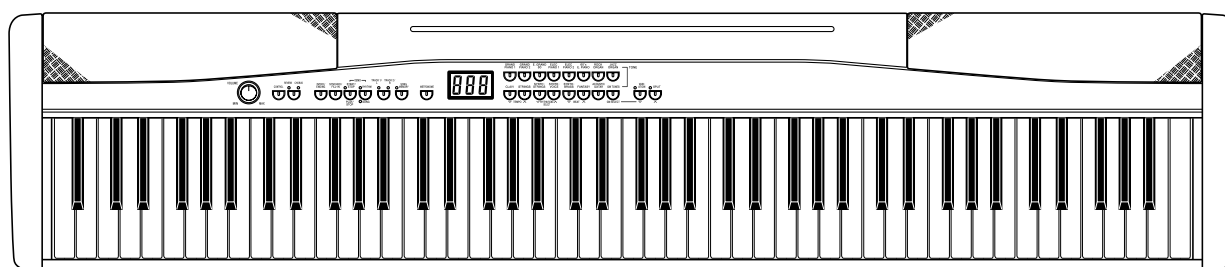
CASIO®

Service Manual

(without price)

PX-300

NOV. 2003



PX-300

HIGH-GRADE KEYBOARD

Ver.5 : Jul. 2008

CONTENTS

Specifications	1
Block Diagram	2
Circuit Description	3
Printed Circuit Board	5
Disassembly	8
Diagnostic Program	12
Schematic Diagrams	14
Exploded View	22
Parts List	23

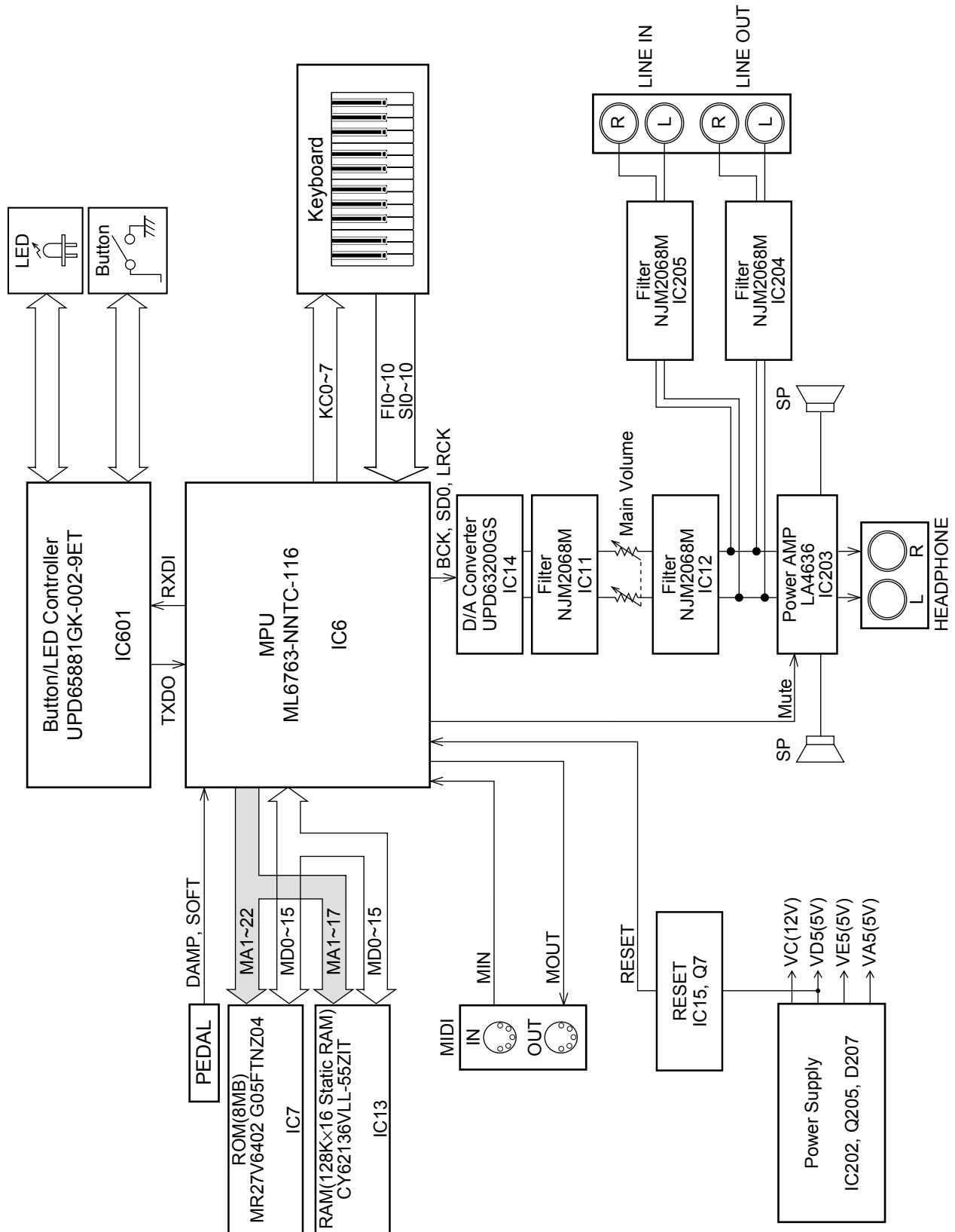
SPECIFICATIONS

GENERAL

Keyboard:	88 piano keys (with touch response)
Polyphony:	32 notes, maximum
Tones:	15 panel tones + 15 variation tones + 128 GM tones + 10 drum sets; with layer and split
Digital Effects:	Reverb (4 types), Chorus (4 types)
Metronome	
Time Signatures:	0, 2, 3, 4, 5, 6
Tempo Range:	30 to 255
Auto Accompaniment	
Number of Rhythms:	120
Tempo Range:	30 to 255
Controllers:	START/STOP, INTRO/ENDING, SYNCHRO/FILL-IN
Modes:	Normal; CASIO CHORD; FINGERED; FULL RANGE CHORD
Accompaniment Volume:	Adjustable
Built-in Tunes	
Number of Tunes:	25 preset + 10 loaded song data
Tempo:	30 to 255
Demo:	Sequential looping of all 25 preset tunes
Lesson Function	
Lesson Part:	Left hand, right hand
Song Memory	
Operations:	Real-time recording, playback
Capacity:	Approximately 5,200 notes (2 tracks)
Memory Backup:	Built-in lithium battery (Battery Life: 5 years)
Pedals:	Damper, Soft/Sostenuto (Selectable)
Other Functions	
Touch:	3 types, off
Transpose:	1 octave (F# to C to F)
Tuning:	A4 = 440.0Hz ±50 cents (adjustable)
MIDI:	16 multi-timbre receive, GM Level 1 standard
Input/Output	
Headphones:	Stereo mini jacks × 2
	Output Impedance : 170Ω
	Output Voltage : 1.1V (RMS) MAX
Pedal:	Standard jacks × 2
LINE OUT (R)(L/MONO):	Standard jacks × 2
	Output Impedance : 2.3kΩ
	Output voltage : 1.4V (RMS) MAX
LINE IN (R)(L/MONO):	Standard jacks × 2
	Input Impedance : 9.0kΩ
	Input Voltage : 200mV
Power:	12V DC
MIDI (THRU)(OUT) (IN)	
Speakers:	(12cm × 6cm) × 2 (Output: 8.0W + 8.0W)
Power Supply:	AC Adaptor: AD-12
Power Consumption:	12V 18W
Dimensions:	132.3 × 27.8 × 12.9 cm (52 1/16 × 10 15/16 × 5 1/16 inch)
Weight:	Approximately 12.5 kg (27.5 lbs)

• Design and specifications are subject to change without notice.

BLOCK DIAGRAM

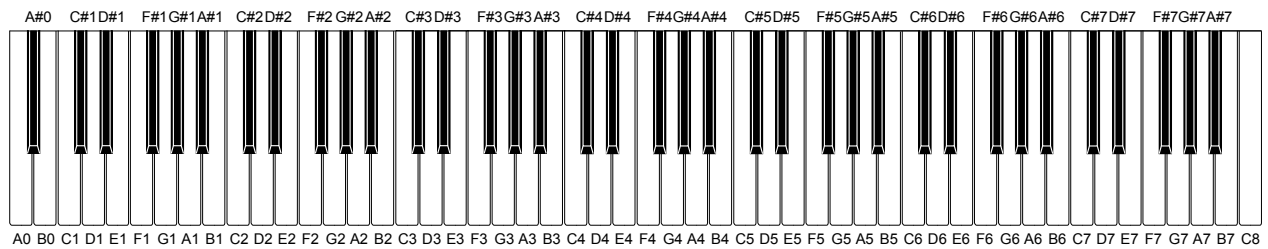


CIRCUIT DESCRIPTION

KEY MATRIX

	KC0	KC1	KC2	KC3	KC4	KC5	KC6	KC7
FI0	A0①	A0#①	B0①	C1①	C1#①	D1①	D1#①	E1①
SI0	A0②	A0#②	B0②	C1②	C1#②	D1②	D1#②	E1②
FI1	F1①	F1#①	G1①	G1#①	A1①	A1#①	B1①	C2①
SI1	F1②	F1#②	G1②	G1#②	A1②	A1#②	B1②	C2②
FI2	C2#①	D2①	D2#①	E2①	F2①	F2#①	G2①	G2#①
SI2	C2#②	D2②	D2#②	E2②	F2②	F2#②	G2②	G2#②
FI3	A2①	A2#①	B2①	C3①	C3#①	D3①	D3#①	E3①
SI3	A2②	A2#②	B2②	C3②	C3#②	D3②	D3#②	E3②
FI4	F3①	F3#①	G3①	G3#①	A3①	A3#①	B3①	C4①
SI4	F3②	F3#②	G3②	G3#②	A3②	A3#②	B3②	C4②
FI5	C4#①	D4①	D4#①	E4①	F4①	F4#①	G4①	G4#①
SI5	C4#②	D4②	D4#②	E4②	F4②	F4#②	G4②	G4#②
FI6	A4①	A4#①	B4①	C5①	C5#①	D5①	D5#①	E5①
SI6	A4②	A4#②	B4②	C5②	C5#②	D5②	D5#②	E5②
FI7	F5①	F5#①	G5①	G5#①	A5①	A5#①	B5①	C6①
SI7	F5②	F5#②	G5②	G5#②	A5②	A5#②	B5②	C6②
FI8	C6#①	D6①	D6#①	E6①	F6①	F6#①	G6①	G6#①
SI8	C6#②	D6②	D6#②	E6②	F6②	F6#②	G6②	G6#②
FI9	A6①	A6#①	B6①	C7①	C7#①	D7①	D7#①	E7①
SI9	A6②	A6#②	B6②	C7②	C7#②	D7②	D7#②	E7②
FI10	F7①	F7#①	G7①	G7#①	A7①	A7#①	B7①	C8①
SI10	F7②	F7#②	G7②	G7#②	A7②	A7#②	B7②	C8②

NOMENCLATURE OF KEYS

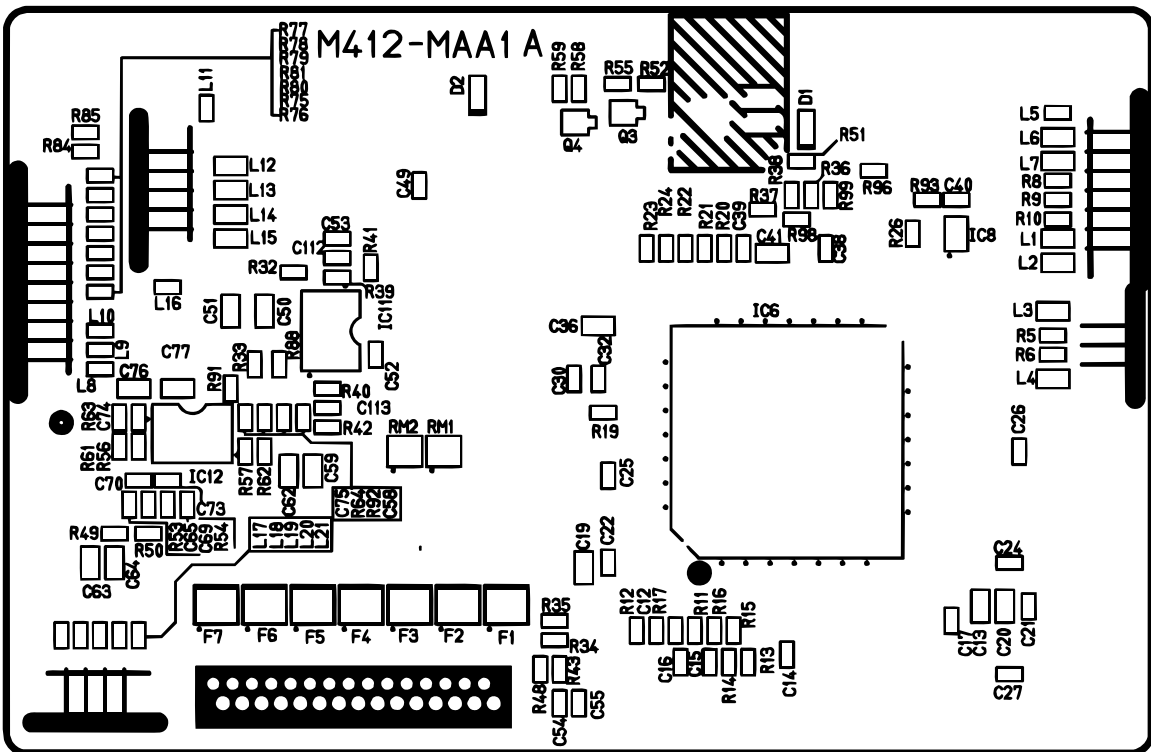
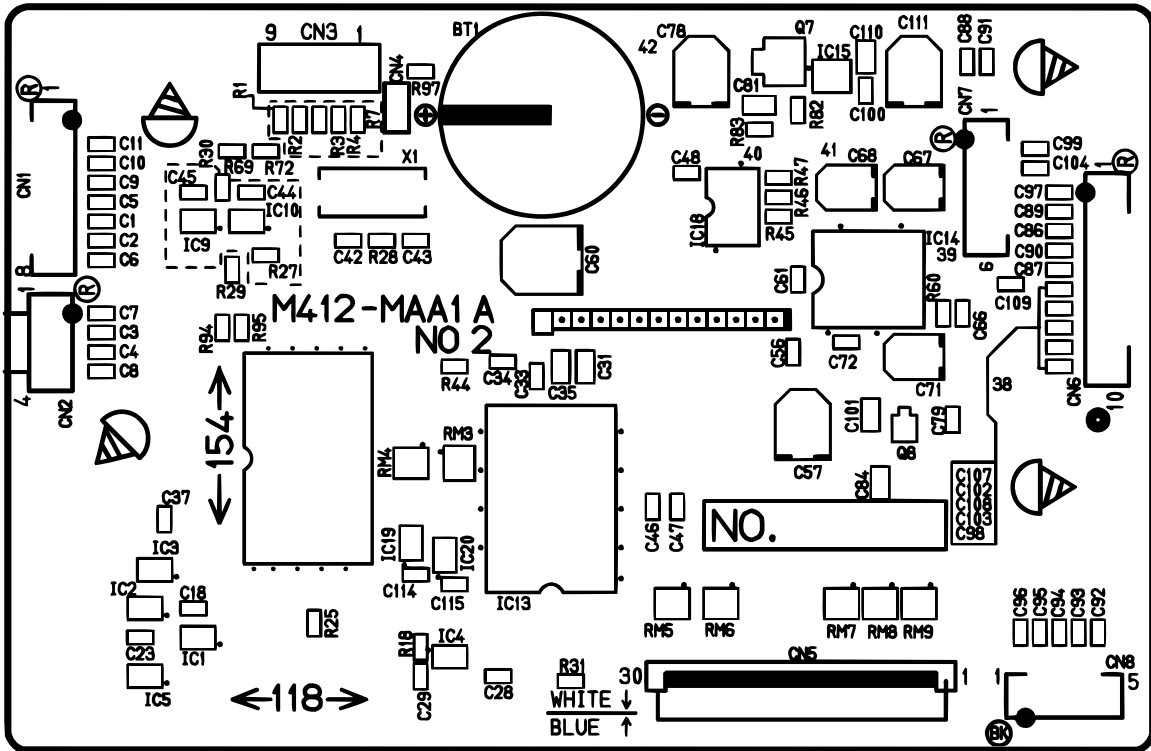


BUTTON MATRIX

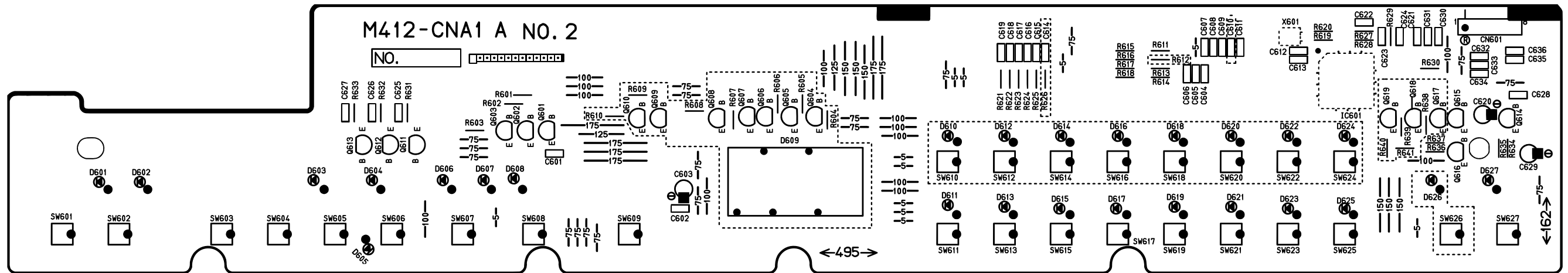
	SC0	SC1	SC2	SC3	SC4	SC5
SI0	G.PIANO 1	PERC ORGAN	CHOIR	MUSIC LIBRARY	PLAY/STOP	
SI1	G.PIANO 2	STRINGS	TENORSAX	METRANOME	NORMAL	
SI2	HONKYTONK	AC.GUITAR	FLUTE	SONG MEMORY	EASY	
SI3	E.PIANO 1	VIBRAPHONE	AC.BASS	LEFT/TRACK1 RIGHT/TRACK2	REVERB/ CHORUS	
SI4	E.PIANO 2	HARPSICHORD	GM TONES	PIPE ORGAN		
SI5						CONTROL
SI6						VARIATION
SI7						SPLIT

PRINTED CIRCUIT BOARDS

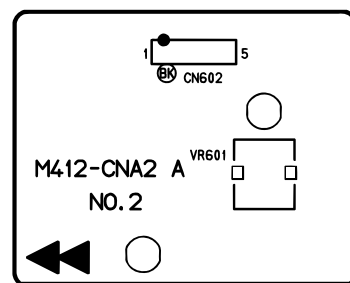
MAIN PCB M412-MAA1



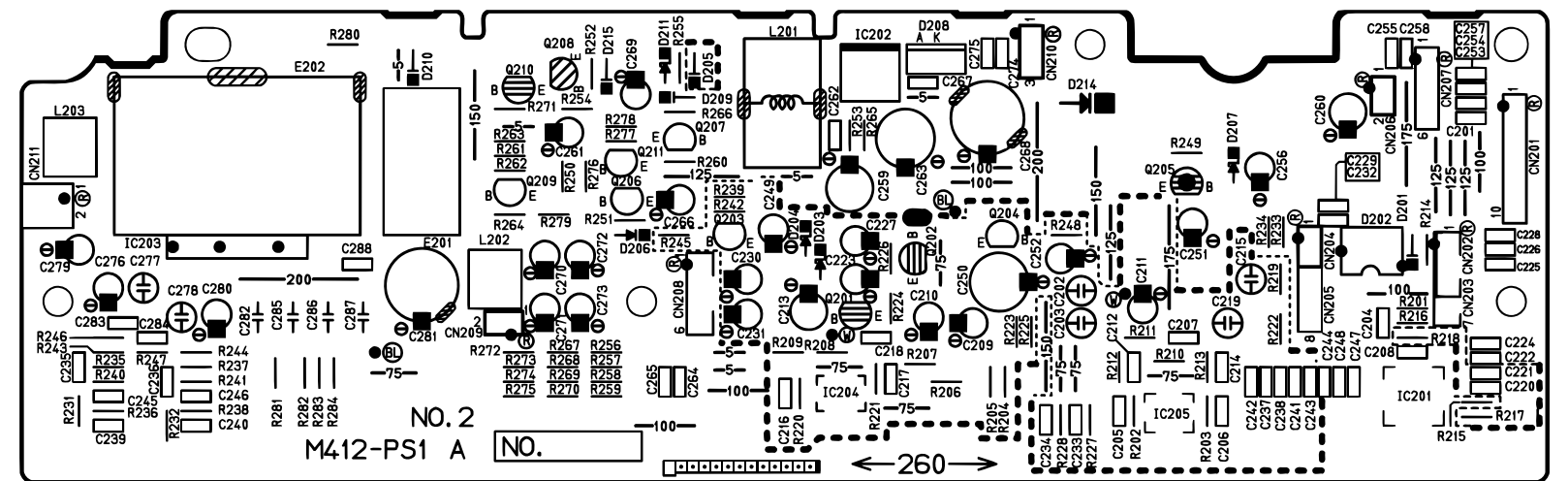
Console PCB M412-CNA1



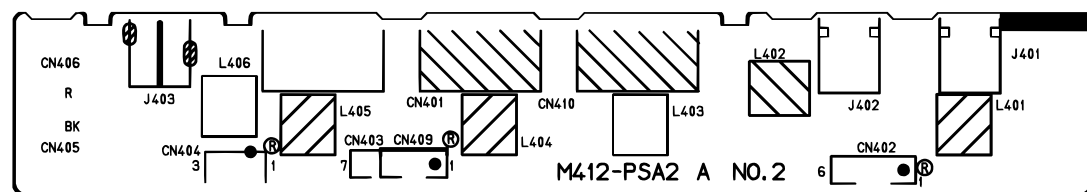
Vollume PCB M412-CNA2



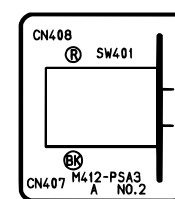
Sub PCB M412-PS1



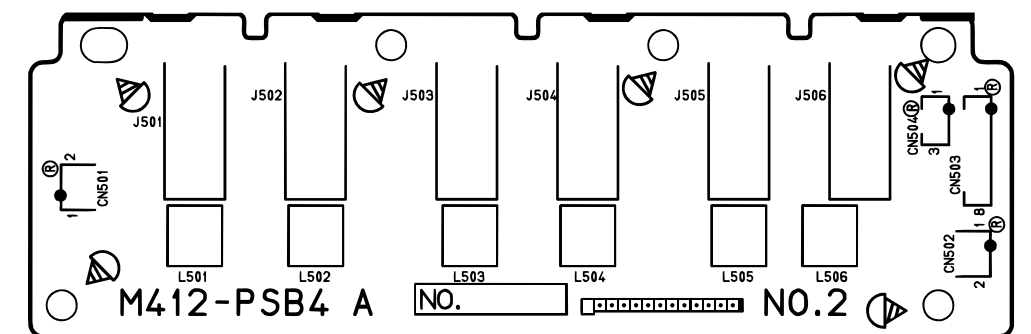
JACK PCB M412-PSA2



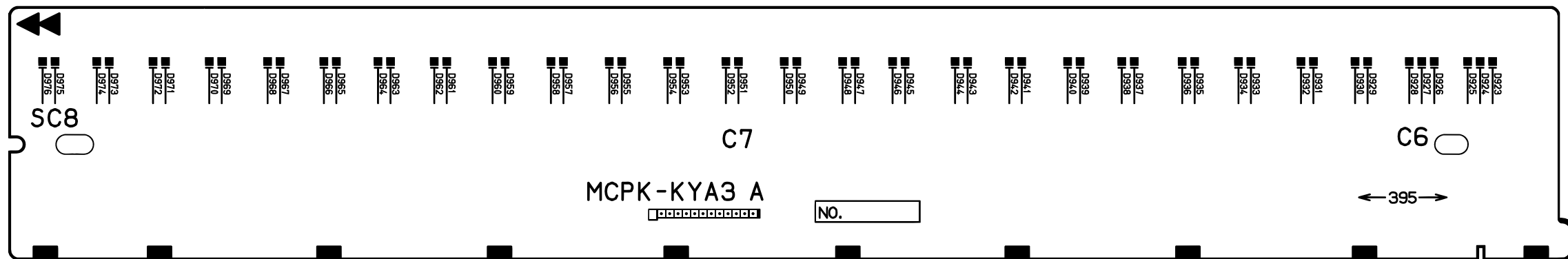
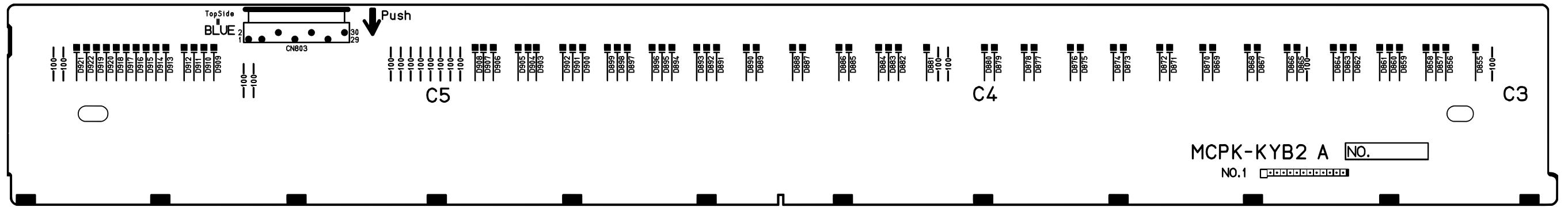
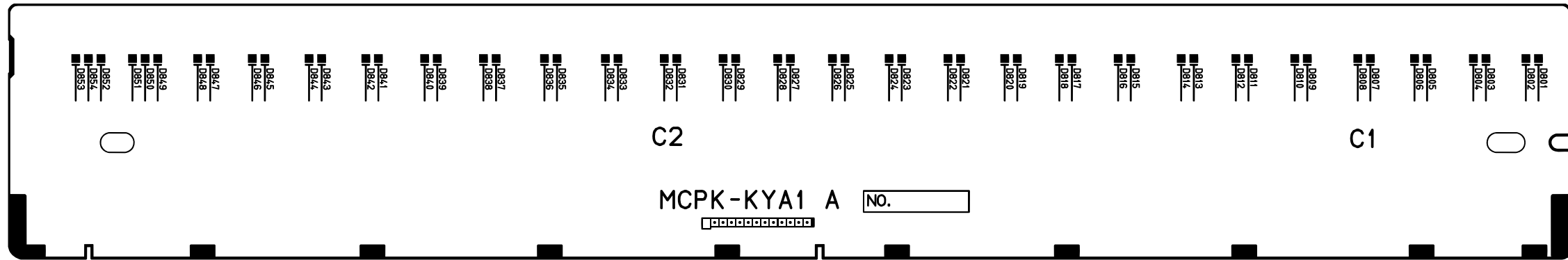
Power Switch PCB M412-PSA3



Pedal PCB M412-PSB4

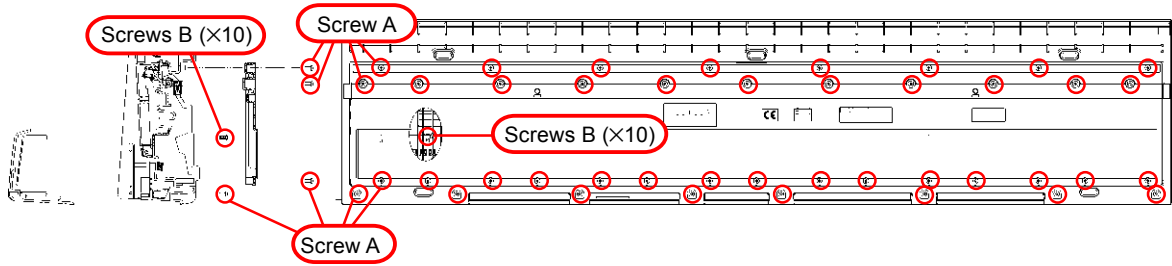


KEY PCB (MCPK-KYA1,KYB2,KYA3)

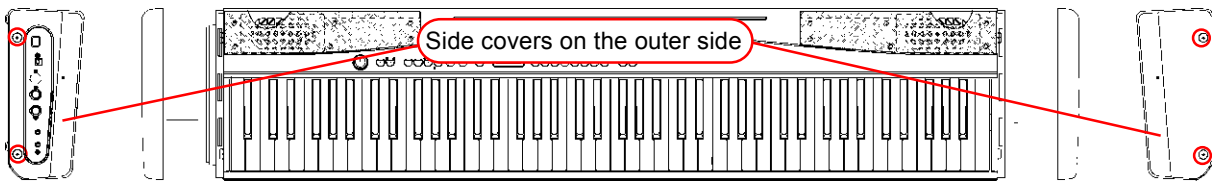


DISASSEMBLY AND ASSEMBLY(*EQUIVALENT MODEL PX-500)

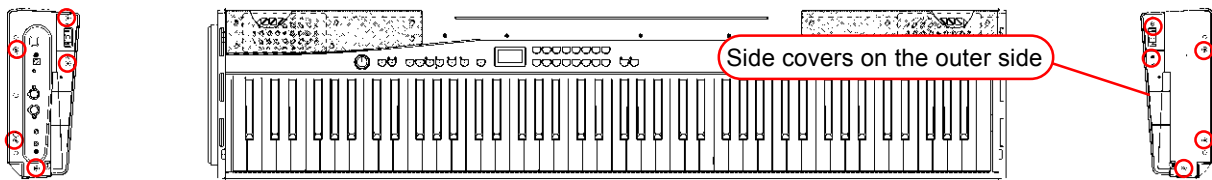
1. Remove 34 screws A at the bottom and then the base plate.
2. Remove ten screws B.



3. Turn the unit over so that the keyboard faces upward.
4. Remove four screws on the left and right sides and then remove the side covers on the outer sides.



5. Remove ten screws on the left and right sides and then the front panel.
6. Remove the side cover on the inner right side.

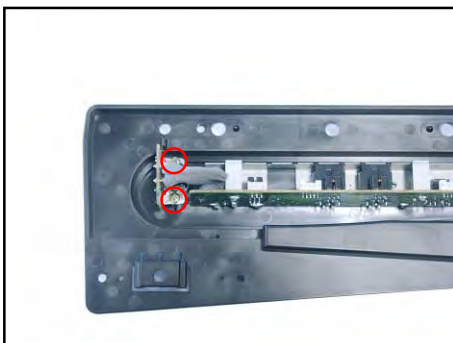


■ Removing the Power PCB (M412-PSA3) and the JACK PCB (M412-PSA2)

7. Remove three connectors.

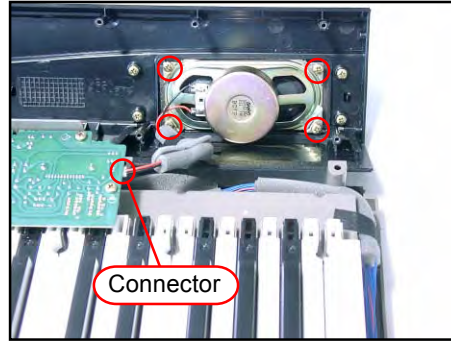
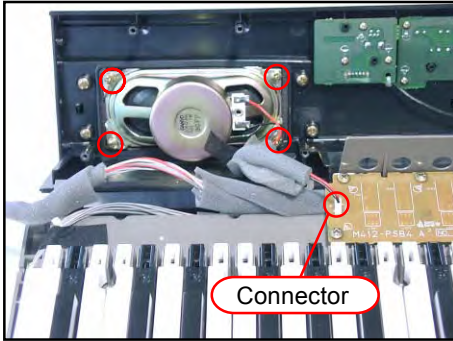


8. Remove two screws and then the Power PCB (M412-PSA3).
9. Remove four screws and then the JACK PCB (M412-PSA2).



■ Removing the speaker

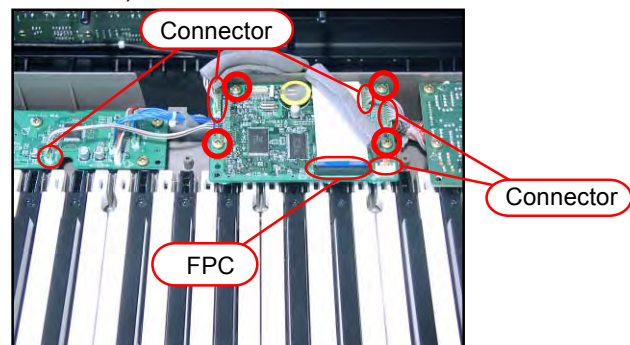
10. Remove two connectors and eight screws and then remove the speaker.



■ Removing the MAIN PCB (M412-MAA1)

11. Remove five connectors and then the FPC.

12. Remove four screws and then the MAIN PCB (M412-MAA1).



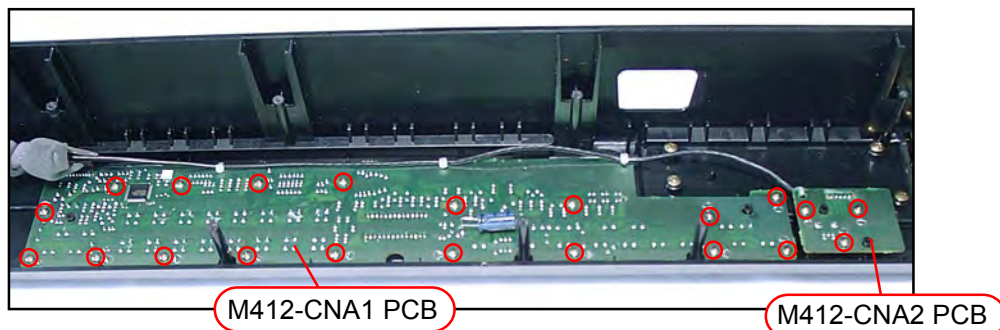
■ Removing the Volume PCB (M412-CNA2)

13. Remove three screws and then the volume PCB (M412-CNA1).

■ Removing the Console PCB (M412-CNA1)

14. Remove 18 screws and then the Console PCB (M412-CNA1).

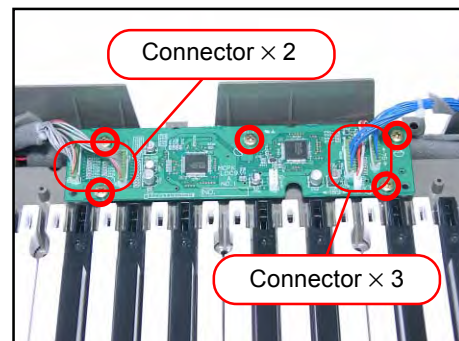
15. Remove the rubber key.



■ Removing the LED PCB (MCPK-LDC9)

16. Remove five connectors.

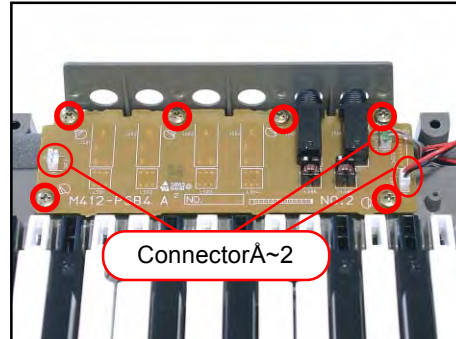
17. Remove five screws and then the LED PCB (MCPK-LDC9).



■ Removing the JACK PCB (M412-PSB4)

18. Remove three connectors.

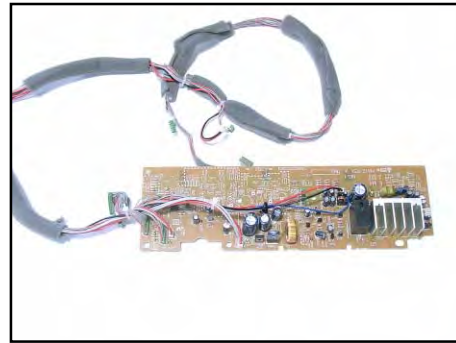
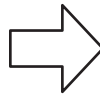
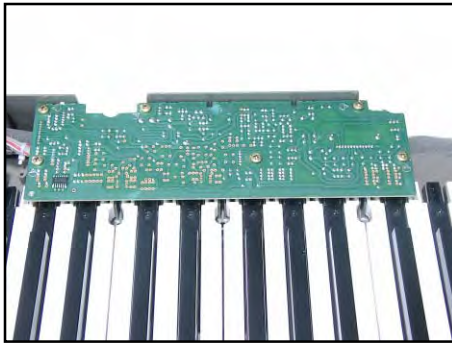
19. Remove six screws and then the LED PCB (MCPK-LDC9).



■ Removing the JACK PCB (M412-PSB4)

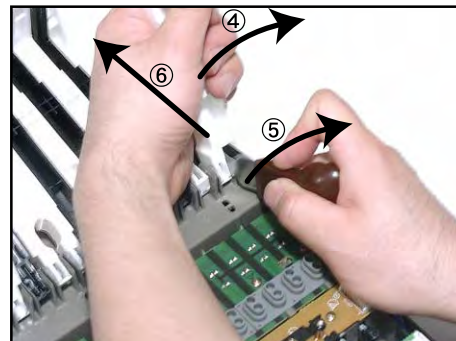
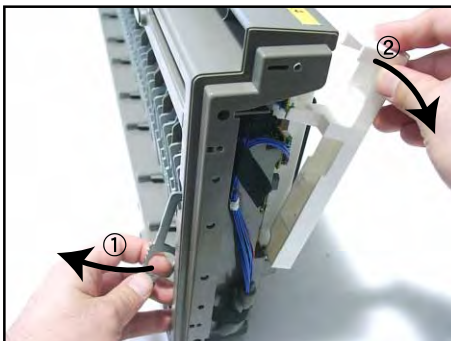
20. Remove three connectors.

21. Remove five screws and then the LED PCB (MCPK-LDC9).



■ Removing the keyboard

22. Remove the keyboard as shown below.

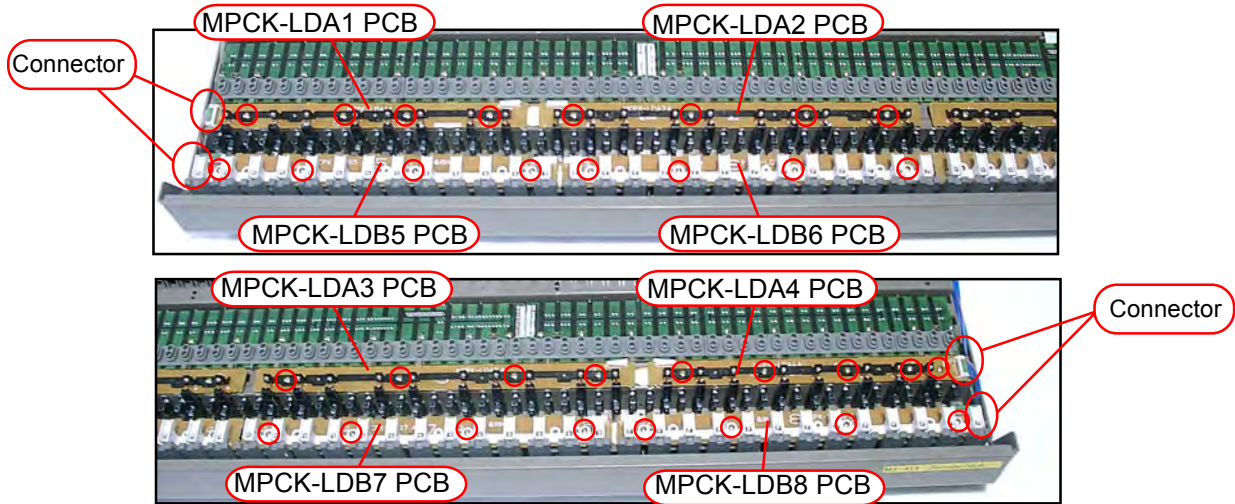


■ Removing the LED PCB (MPCK-LDA1~LDA4, LDB5~LDB8)

23. Remove four connectors.

24. Remove four screws and the PCB for each PCB.

* As for MPCK-LDA4 only, remove five screws.



■ Removing the KEY PCB (MPCK-KYA1, KYB2, KYA3)

25. Remove the rubber key.

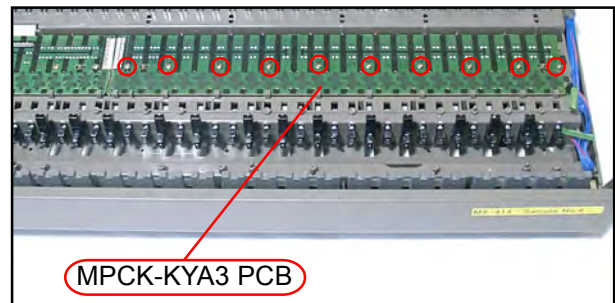
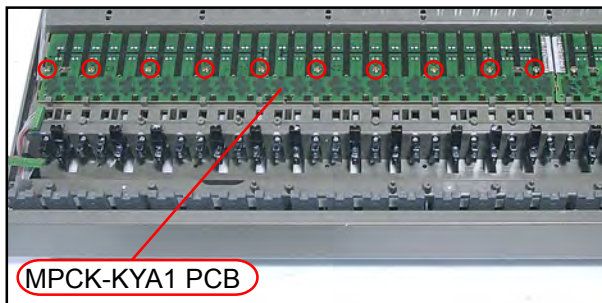
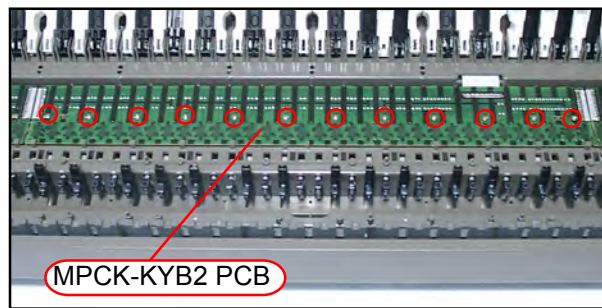
* One of them has a different length.



26. Remove ten screws and then the KEY PCB (MPCK-KYA1).

27. Remove 12 screws and then the KEY PCB (MPCK-KYB2).

28. Remove ten screws and then the KEY PCB (MPCK-KYA3).



DIAGNOSTIC PROGRAM

■ Initial Setup

1. Connect an AC adaptor.
2. Connect a Sustain pedal.
3. "Main" volume: MAX.

NOTE: If there is no pedal or MIDI cable, pedal or MIDI check can be skipped.

■ How to start diagnostic program

1. Press the "POWER" button while pressing the "REVERB/CHORUS KEY" buttons.
2. Release the "POWER" button first while still pressing the "REVERB/CHORUS KEY" buttons.
All the LEDs light and the test mode boots.

■ Diagnostic program

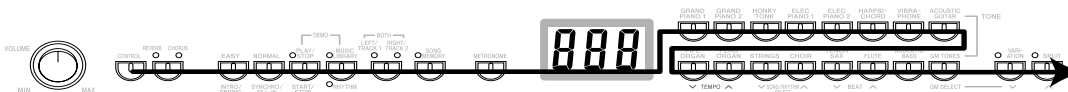
1. Automatic Test

- ① RAM CHECK
* When an error is found in RAM, "TONE1" LED lights.
- ② ROM CHECK
* When an error is found in ROM, "TONE2" LED lights.
- ③ LED CHECK
Groups of LEDs as shown below light by turns repeatedly.
- ④ Press "CONTROL" button.
*The confirmation chord of C4, E4 and G4 sounds.



2. BUTTON check

- ① Press "CONTROL" button.
*The confirmation tone of C6 sounds.
- ② Press the buttons in the following order.
*NG tone sounds when an error is found in the buttons or when the buttons are pressed in a wrong order.
* This check cannot be aborted.



3. Pedal check (If there is no Pedal, this check can be skipped)

- ① Press "CONTROL" button.
*The confirmation chord of C4, E4 and G4 sounds.
- ② Press the "DAMPER" pedal.
* The confirmation tone of C4 sounds and "RIGHT/TRACK2" LED lights.
- ③ Press the "SOFT" pedal.
* The confirmation tone of C4 sounds and "RIGHT/TRACK1" LED lights.

4. Headphone check

- ① Press "CONTROL" button.
*The confirmation chord of C4, E4 and G4 sounds.
- ② Connect the headphone to the LEFT jack.
* "CHORUS" LED lights.
- ③ Remove the headphone from the jack.
* "REVERB" LED lights.
- ④ Connect the tuning meter to the RIGHT jack.
* "CHORUS" LED lights.
- ⑤ Press A4 key.
* Make sure that the tuning meter is set at 440 ± 2 cents.
- ⑥ Remove the tuning meter from the jack.
* "REVERB" LED lights.

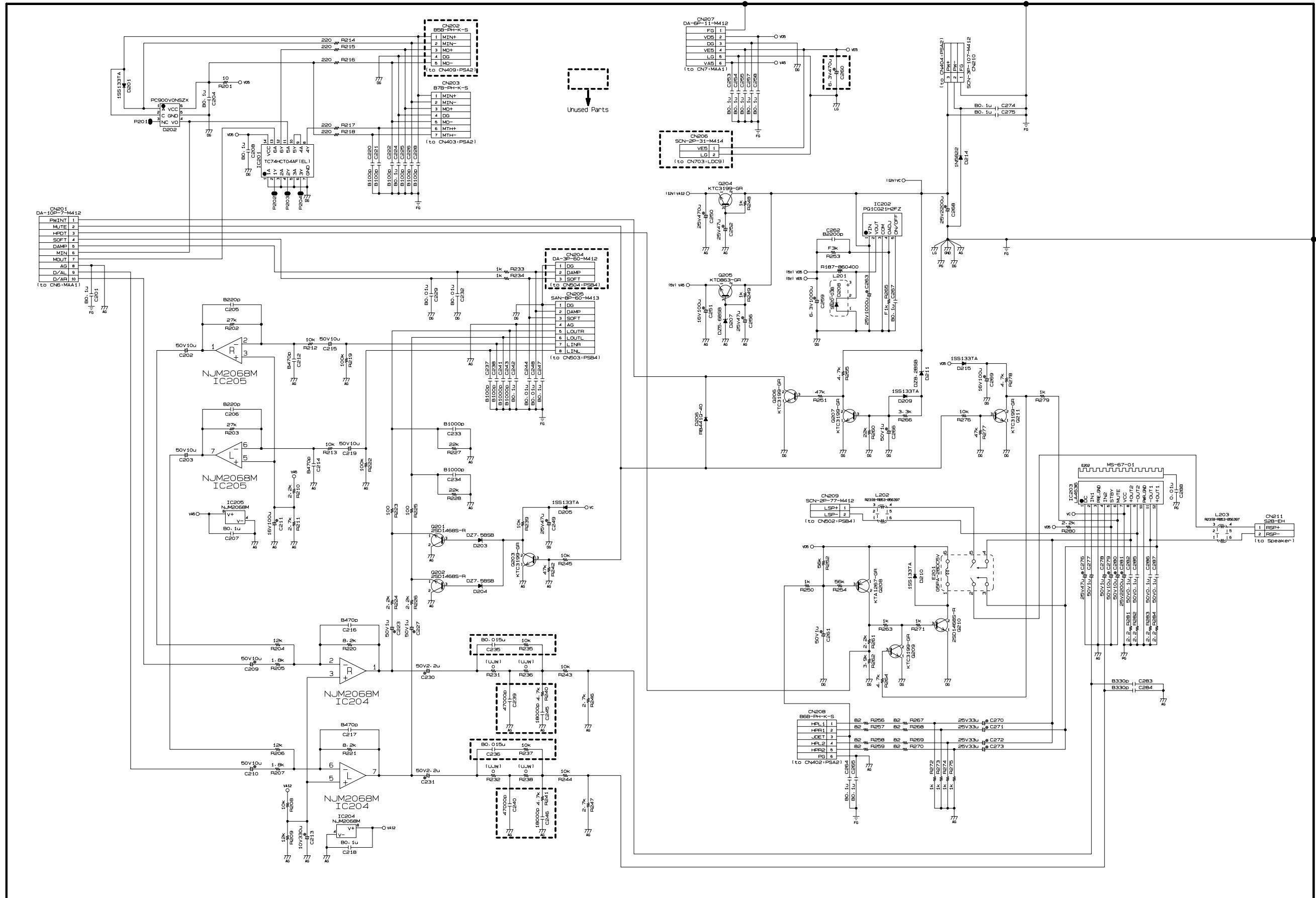
5. MIDI IN/OUT check (If there is no MIDI cable, this check can be skipped)

- ① Connect MIDI IN and MIDI OUT terminals with a MIDI cable.
- ② Press "CONTROL" button.
*The confirmation chord of C4, E4 and G4 sounds.
- ③ Press "A4 KEY" button.
*The confirmation chord of C4, E4 and G4 sounds.

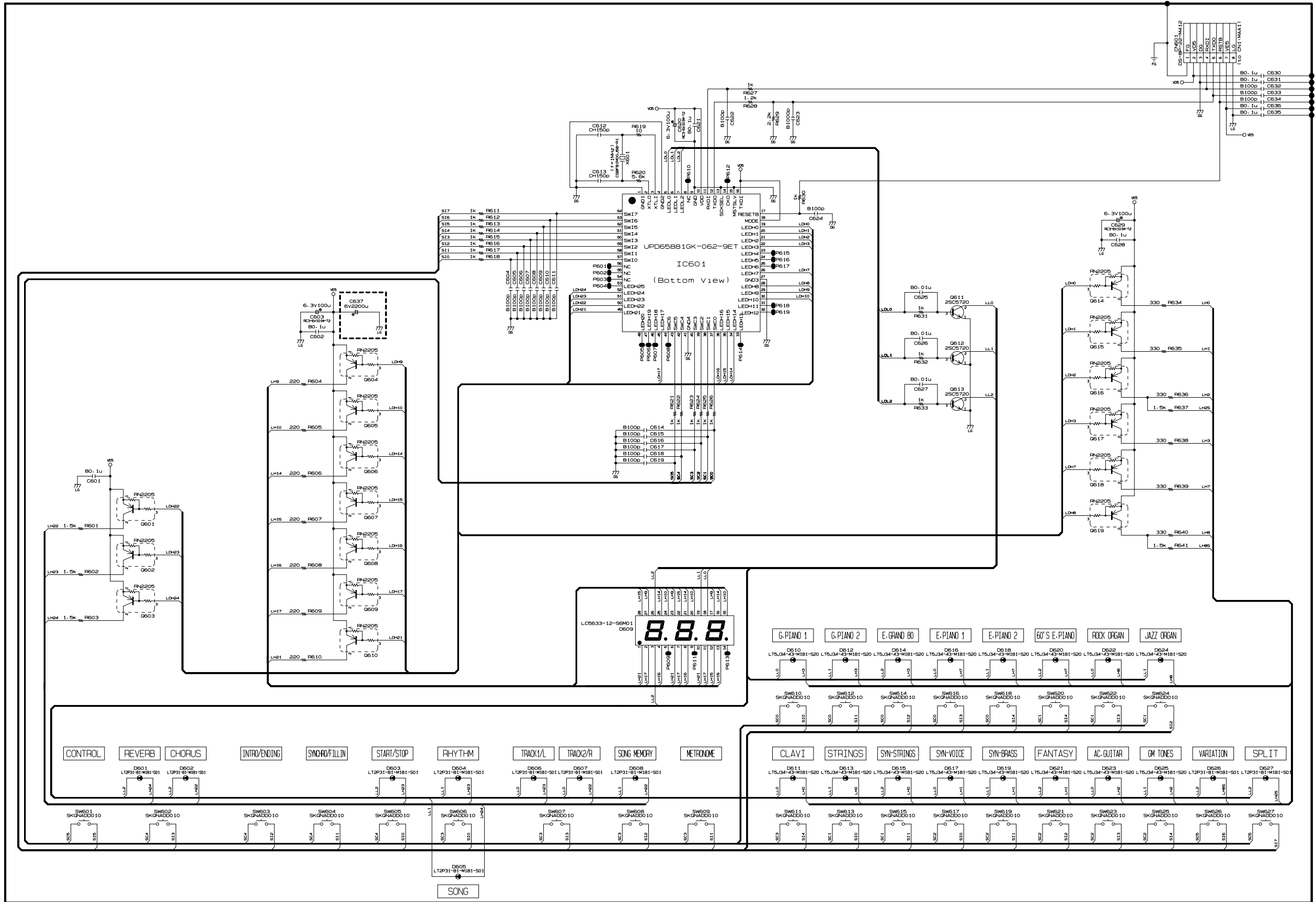
6. The diagnostic program ends.

"REVERB", "MUSIC LIBRARY", "LEFT/TRACK1", "LEFT/TRACK2", "TONE1" LEDs light.
"00" appears on the display.

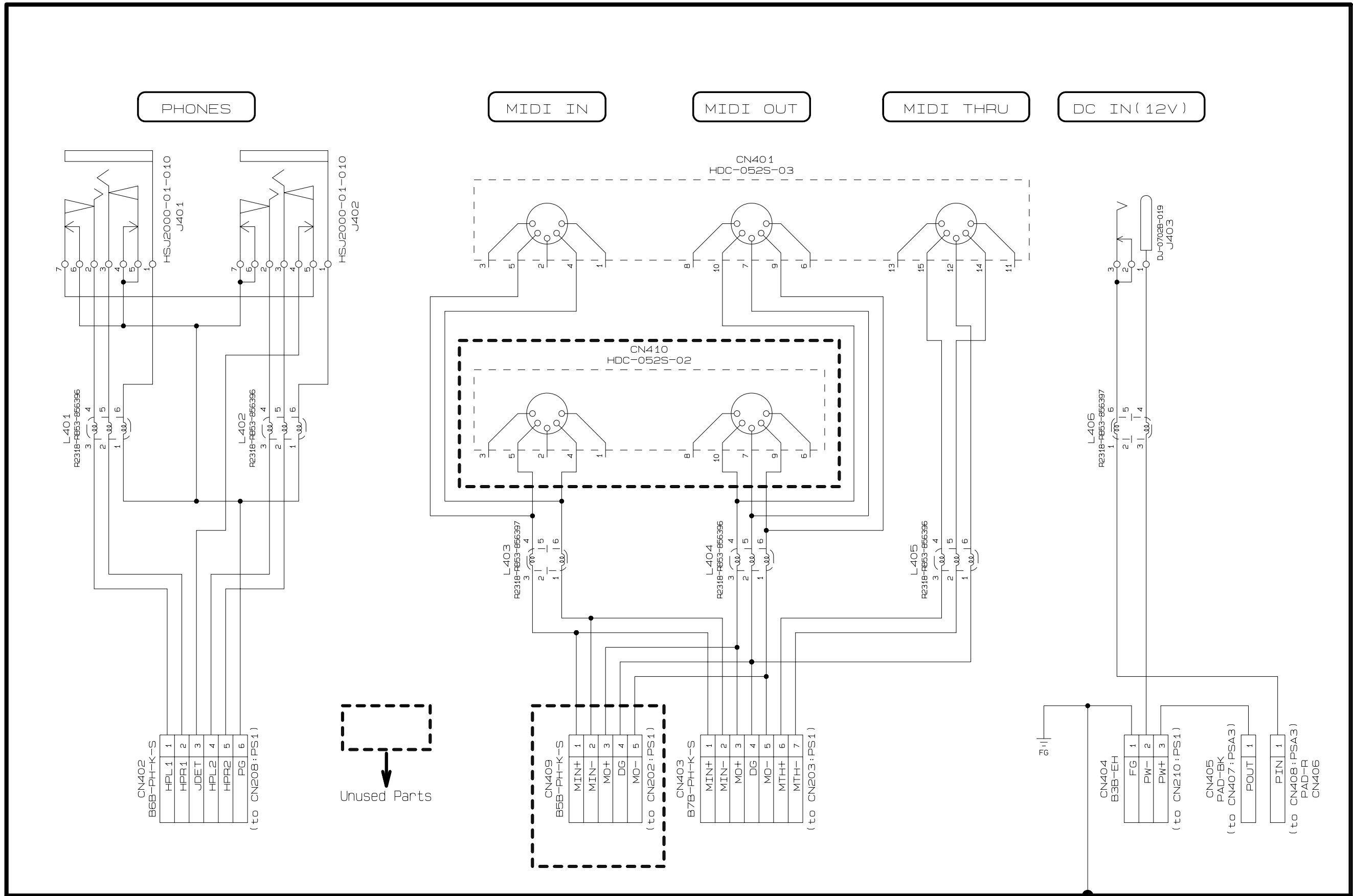
Sub PCB M412-PS1



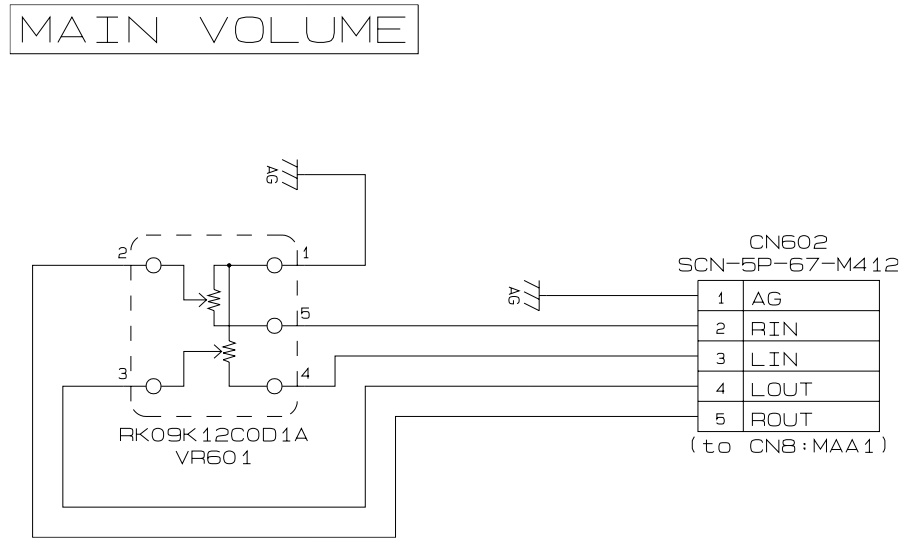
Console PCB M412-CNA1



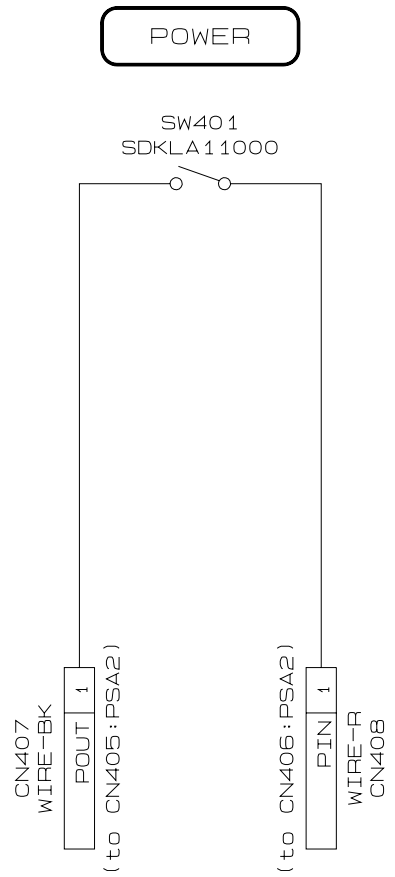
JACK PCB M412-PSA2



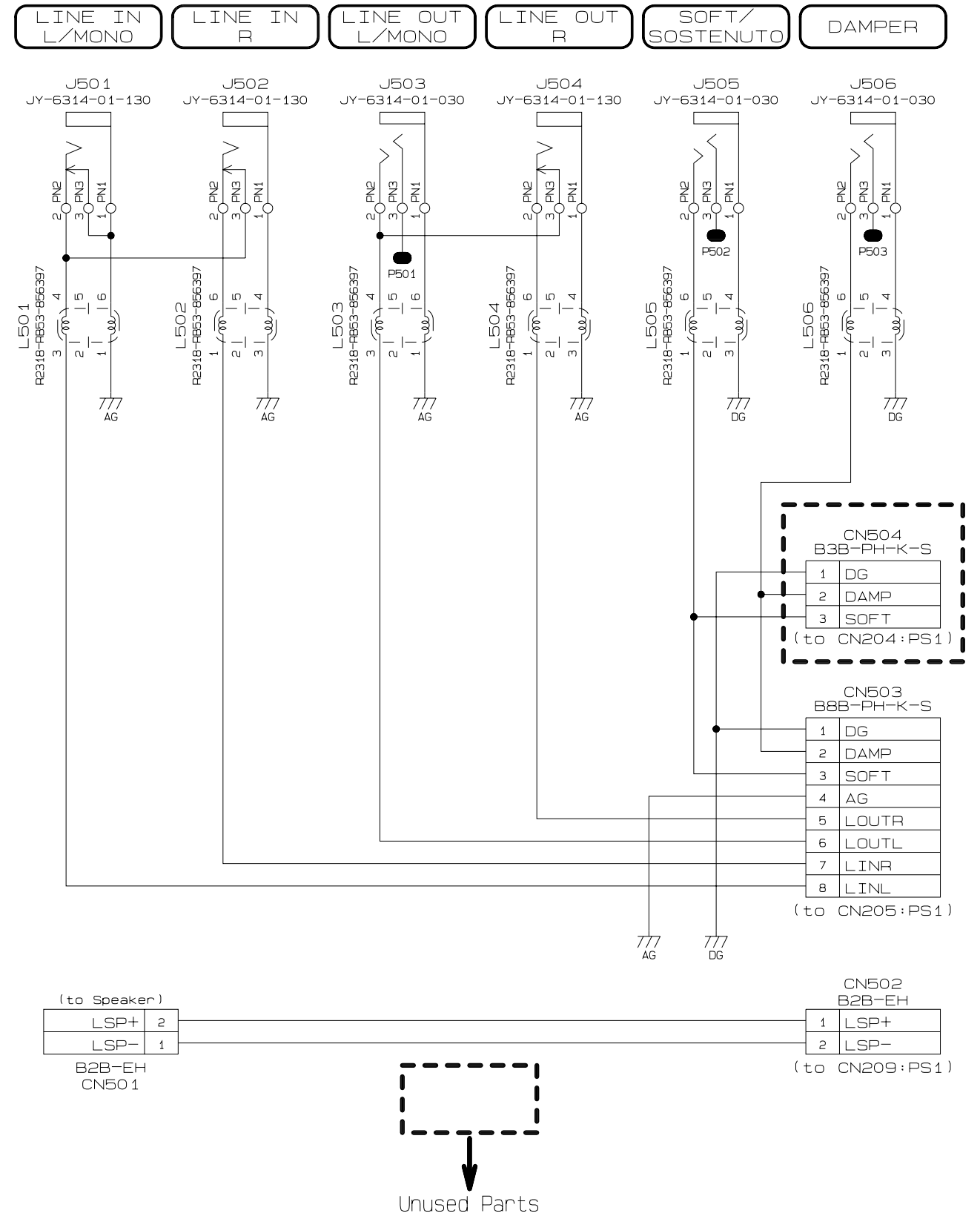
Volume PCB M412-CNA2



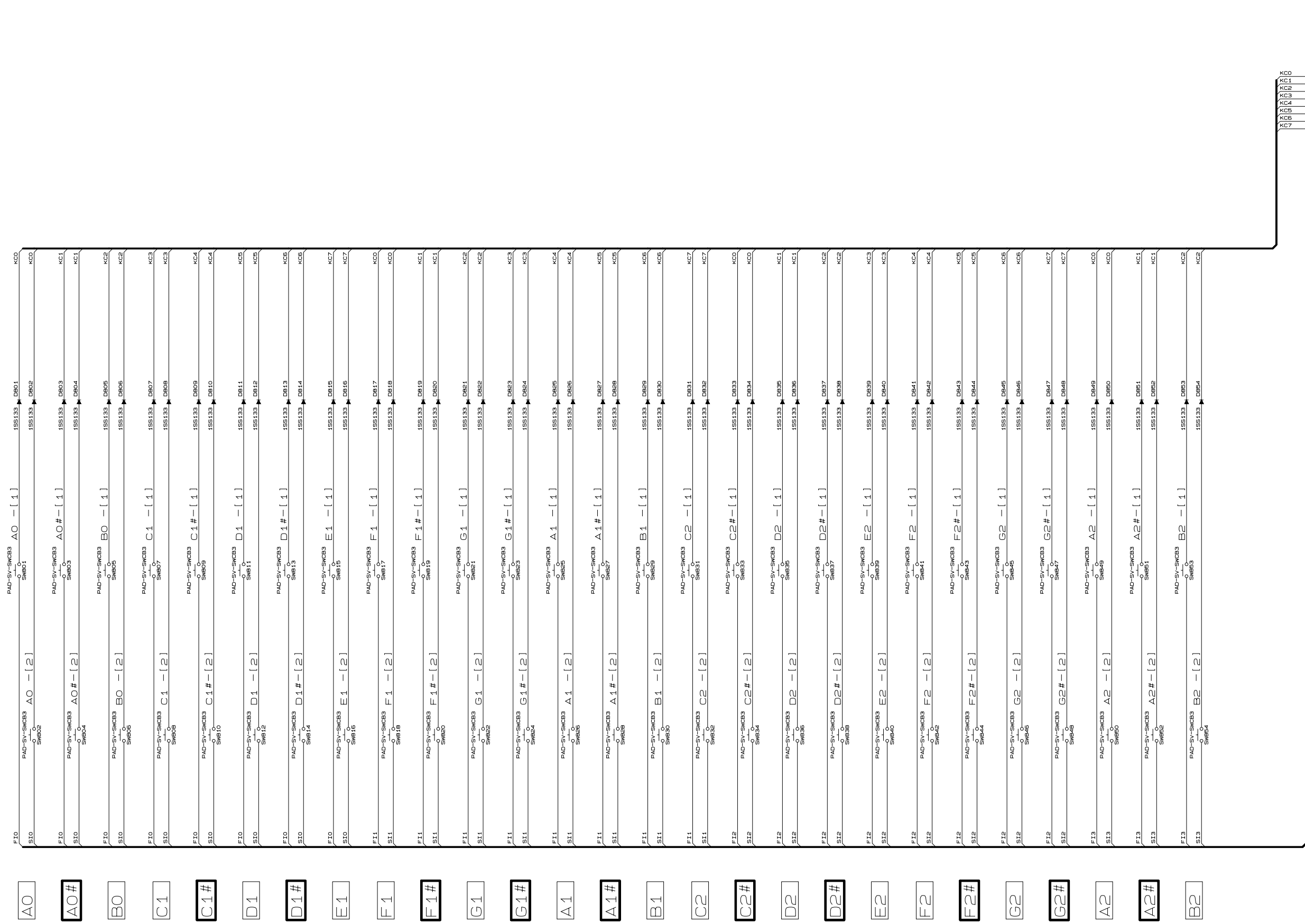
Power Switch PCB M412-PSA3



Pedal PCB M412-PSB4



Key PCB MPCK-KYA1

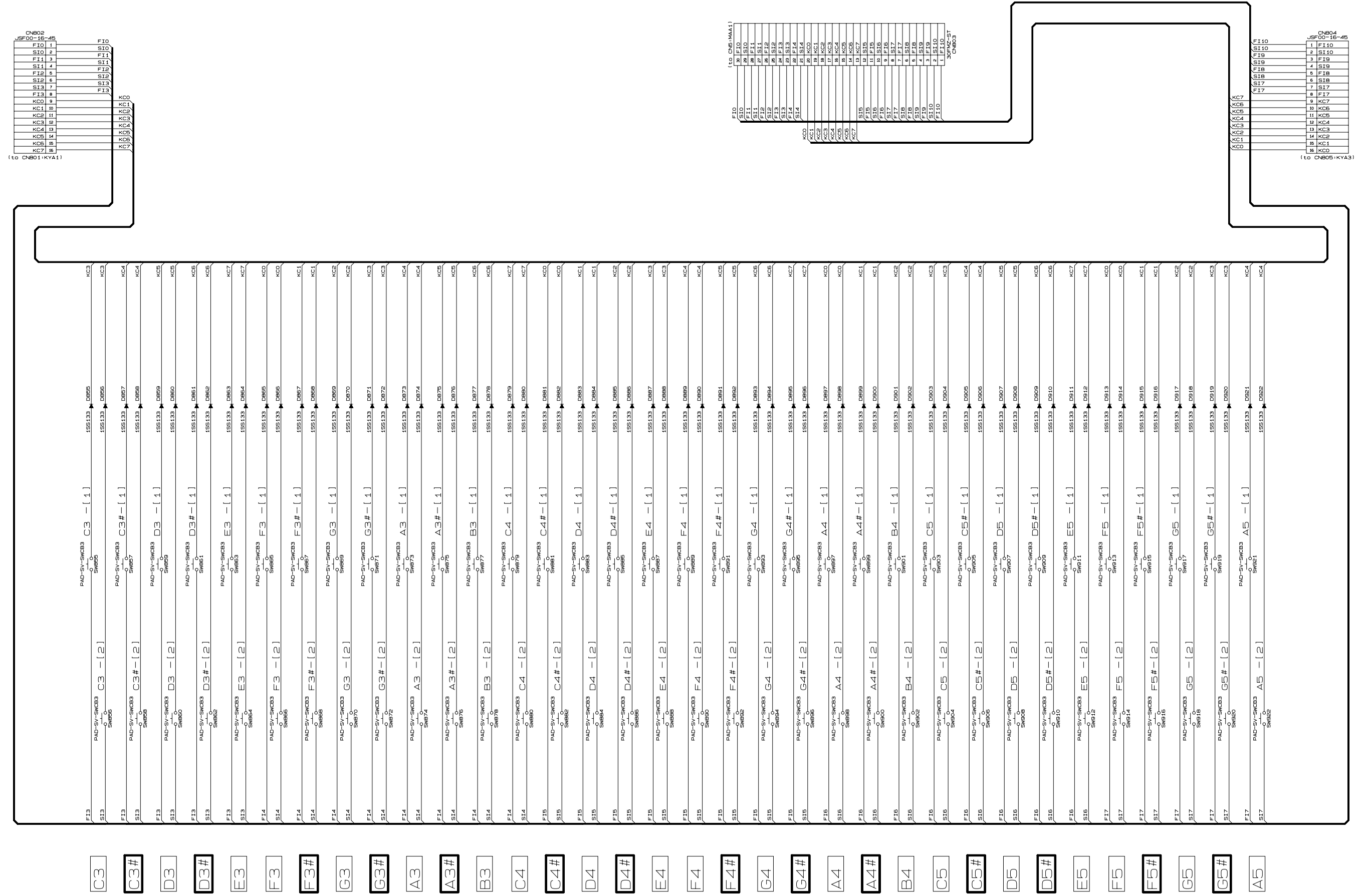


F10	1	F10
S10	2	S10
F11	3	F11
S11	4	S11
F12	5	F12
S12	6	S12
F13	7	F13
K00	8	K00
KC1	9	KC1
KC2	10	KC2
KC3	11	KC3
KC4	12	KC4
KC5	13	KC5
KC6	14	KC6
KC7	15	KC7

(to CNB02:KYB2)

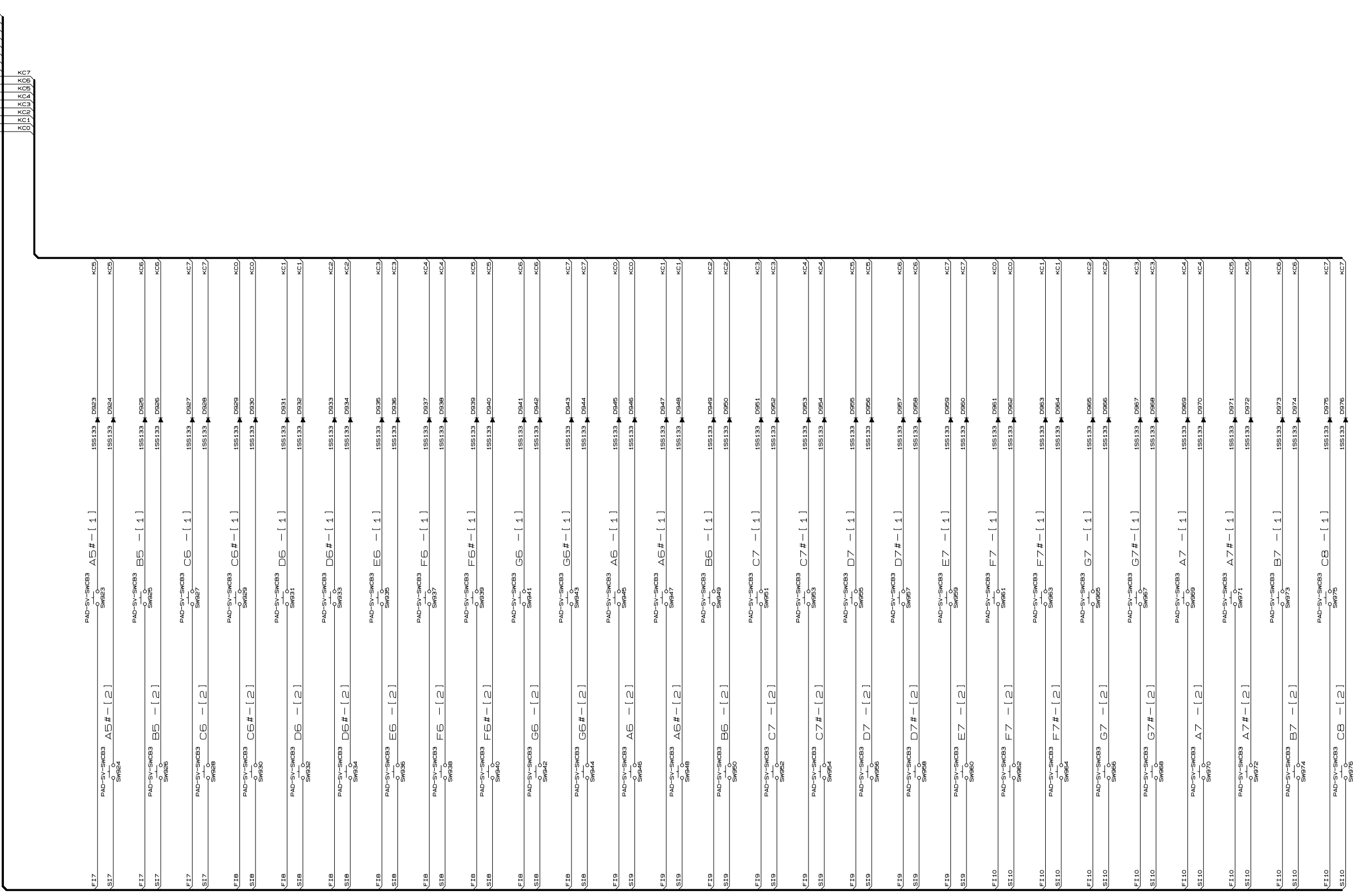
CNB01	16	CNB01
JSF00-16-45	17	JSF00-16-45

Key PCB MPCK-KYB2



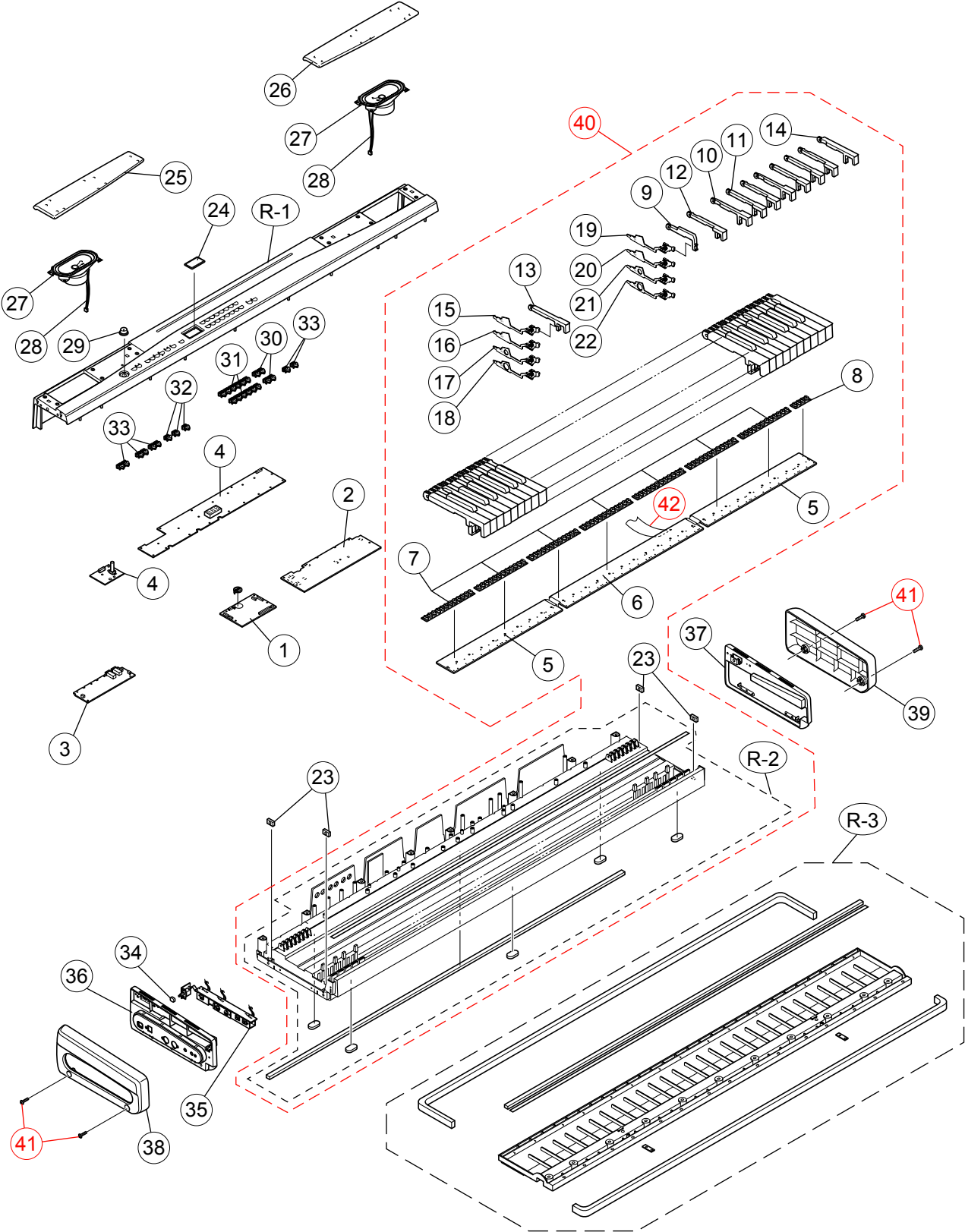
Key PCB MPCK-KYA3

CN805		FI10	
J5F00-1B-45	1	SI10	2
FI10	3	FI9	3
SI10	4	SI9	4
FI9	5	FI8	5
SI9	6	SI8	6
FI8	7	FI7	7
SI8	8	SI7	8
FI7	9	FI6	9
SI7	10	SI6	10
FI6	11	FI5	11
SI6	12	SI5	12
FI5	13	FI4	13
SI5	14	SI4	14
FI4	15	FI3	15
SI4	16	SI3	16
FI3	17	FI2	17
SI3	18	SI2	18
FI2	19	FI1	19
SI2	20	SI1	20



- A5#**
- B5
- C6
- C6#**
- D6
- D6#**
- E6
- F6
- F6#**
- G6
- G6#**
- A6
- A6#**
- B6
- C7
- C7#**
- D7
- D7#**
- E7
- F7
- F7#**
- G7
- G7#**
- A7
- A7#**
- B7
- C8

EXPLODED VIEW



PARTS LIST

PX-300

Notes: This parts list does not include the cosmetic parts, which parts are marked with item No. "R-X" in the exploded view.

Contact our spare parts department if you need these parts for refurbish.

1. Prices and specifications are subject to change without prior notice.
2. As for spare parts order and supply, refer to the "GUIDEBOOK for Spare parts Supply", published separately.
3. The numbers in item column correspond to the same numbers in drawing.

N	Item	Parts code	Parts Name	Specification	Q	Price Code	R	Remarks
MAIN PCB MAA1								
N	1	10143170	PCB ASSY/MAIN	TK-RJM503529*001	1	DI	A	
	D1	23902576	DIODE	RB501V-40TE-17	1	AB	X	
	D2	10133383	DIODE	02DZ2.7-Z(TPH3)	1	AA	X	
	IC1	10089360	IC	TC7SZ02FU(TE85L)	1	AC	X	
	IC11,12	10047445	IC	NJM2068M-D(T1)	2	AC	X	
	IC13	10129081	MEMORY	CY62136VLL-55ZIT	1	BC	X	
	IC14	21056665	IC	UPD63200GS-E1	1	AX	X	
	IC15	69320063	IC	R1151N001C-TR	1	AN	X	
	IC18	10123003	IC	TC74VHCT08AFT(EL)	1	AC	X	
	IC19,20	10040647	IC	TC7SH08FU(TE85L)	2	AA	X	
	IC2	10132151	IC	TC7SZ86FU(TE85L)	1	AC	X	
	IC3	10132150	IC	TC7SZ00FU(TE85L)	1	AB	X	
	IC4	10116307	IC	TC7SZ126FU(TE85L)	1	AB	X	
	IC5	10089361	IC	TC7SZ32FU(TE85L)	1	AC	X	
N	IC7	10136290	MEMORY	MR27V6402G05ETNZ04	1	BQ	X	
	IC8	10081273	IC	TC7SH00FU(TE85L)	1	AB	X	
	L1,2,6,7,12,14,15	10122963	FERRITE BEAD	BLM21AG102SN1D	7	AC	X	
	L5,8,9,16-20	10095204	FERRITE BEAD	BLM18AG102SN1D	8	AA	X	
	Q3	69305558	TRANSISTOR	KTA2014GR-RTK	1	AA	X	
N	Q4,8	10116461	TRANSISTOR	KTC4075GR-RTK	2	AA	X	
	Q7	22592764	TRANSISTOR	2SB1188T100Q	1	AB	X	
	X1	10133372	RESONATOR	SMD-49-12M	1	AI	X	
	BT1	10052229	BATTERY	CR2032/1HF1	1	AG	X	
	CN1	35015551	CONNECTOR	B8B-PH-K-S	1	AA	X	
	CN4	35015117	CONNECTOR	RE-H022TD-1190	1	AA	X	
N	CN5	35017259	CONNECTOR	30FMZ-BT	1	AF	X	
	CN6	35013696	CONNECTOR	B10B-PH-K-S	1	AB	X	
	CN7	35016384	CONNECTOR	B6B-PH-K-S	1	AA	X	
	CN8	35016944	CONNECTOR	B5B-PH-K-S	1	AA	X	
N	F3,F4	10122975	NETWORK/R-C	EZASSB516BJ	2	AA	C	
N	F1,F2,F5,F6,F7	10122976	NETWORK/R-C	EZASTB63ABJ	5	AA	C	
Sub PCB PS1								
N	2	10143171	PCB ASSY/SUB	TK-RJM503530*001	1	CT	B	
	D201,205,209,210,215	10079928	DIODE	1SS133TA	5	AA	X	
N	D203,204	10137846	DIODE	DZ7.5BSBTA	2	AA	X	
	D206	23902828	DIODE	RB441Q-40T-77	1	AA	X	
	D207	10085189	DIODE	DZ5.6BSBTA	1	AA	X	
	D211	10132124	DIODE	DZ8.2BSBTA	1	AA	X	
	Q201,201,210	10025042	TRANSISTOR	2SD1468STPR	3	AA	X	
	Q203,204,206,207,209,211	10079927	TRANSISTOR	KTC3199GR-AT	6	AA	X	
	Q205	10132122	TRANSISTOR	KTD863GR-AT	1	AA	X	
	Q208	10079925	TRANSISTOR	KTA1267GR-AT	1	AA	X	
	CN201	10127510	HARNESS	DA-10P-7-M412	1	AH	X	
N	CN203	35014095	CONNECTOR	B7B-PH-K-S	1	AA	X	
	CN205	10135962	HARNESS	SAN-8P-60-M413	1	AN	X	
N	CN207	10127514	HARNESS	DA-6P-11-M412	1	AF	X	
	CN208	35016384	CONNECTOR	B6B-PH-K-S	1	AA	X	
	CN209	10127515	HARNESS	SCN-2P-77-M412	1	AD	X	
	CN210	10127516	HARNESS	SCN-3P-107-M412	1	AG	X	
	CN211	10045573	CONNECTOR	S2B-EH	1	AA	X	
	D208	23901463	DIODE	SB20-03B	1	AD	X	
	D214	10094579	DIODE	1N5822	1	AC	X	

Notes: N- New parts

Q- Quantity used per unit

R- Rank

R -A: Essential

B: Stock recommended

C: Others

X: No stock recommended

N	Item	Parts code	Parts Name	Specification	Q	Price Code	R	Remarks
	E201	69324021	RELAY	G5PA-28DC5V	1	AT	X	
	IC201	10040646	IC	TC74HCT04AF(EL)	1	AB	X	
	IC202	69320061	IC	PQ1CG21H2FZ	1	AO	X	
	IC203	10062671	IC	LA4636	1	AV	X	
	L201	10071755	COIL	R187-860400	1	AF	X	
	L202,203	10056228	COIL	R2318-RB53-856397	2	AB	X	
Jack PCB PSB4								
N	3	10143172	PCB ASSY/JACK	TK-RJM503531*001	1	AZ	C	
	CN501,502	35800692	CONNECTOR	B2B-EH	2	AA	X	
	CN503	35015551	CONNECTOR	B8B-PH-K-S	1	AA	X	
N	J501,502,504	69325358	CONNECTOR	JY-6314-01-130	3	AA	X	
	J503,505,506	69325081	CONNECTOR	JY-6314-01-030	3	AB	X	
	L501-506	10056228	COIL	R2318-RB53-856397	6	AB	X	
Console PCB								
N	4	10143183	PCB ASSY/CONSOLE	TK-RJM503526*001	1	CP	B	CNA1,CNA2
N	D601-608,626,627	10136861	LED	LT2P31-81-M181-S01	10	AA	X	
N	D610-625	10136862	LED	LT5J34-43-M181-S20	16	AA	X	
	Q601-610,614-619	10047535	TRANSISTOR	RN2205(TPE4)	16	AA	X	
	Q611-613	10047532	TRANSISTOR	2SC5720(TPE4)	3	AA	X	
	SW601-627	10096077	SWITCH	SKQNADD010	27	AA	X	
	CN602	10127509	HARNESS	SCN-5P-67-M412	1	AO	X	
	VR601	10122556	VARIABLE R	RK09K12C0D1A	1	AL	X	
Key board assy								
	5	10133488	PCB ASSY/KEY	TK-RJM503365*001	1	BI	C	KYA1,KYA3
	D801-854,923-976	10079928	DIODE	1SS133TA	108	AA	X	
	6	10133482	PCB ASSY/KEY	TK-RJM503366*001	1	BC	C	
	D855-922	10079928	DIODE	1SS133TA	68	AA	X	
	CN803	35017294	CONNECTOR	30FMZ-ST	1	AF	X	
	7	10133656	KY-RUBBER-AG-CPK	RJM502920-001	7	AK	B	
	8	10133635	KY-RUBBER-GC-CPK	RJM502921-001	1	AG	B	
	9	10135317	B-KEY-CPK	RJM502797-001V01	36	AC	C	
	10	10135426	W-KEY-CEGB-CPK	RJM502862-001V01	7	AT	C	
	11	10135427	W-KEY-DFA-CPK	RJM502863-001V01	7	AQ	C	
	12	10135428	W-KEY-B-CPK	RJM502794-001V01	1	AG	C	
	13	10135429	W-KEY-SA-CPK	RJM502795-001V01	1	AJ	C	
	14	10135430	W-KEY-SC-CPK	RJM502796-001V01	1	AJ	C	
	15	10135435	HAMMER-ASSY-W1	TK-RJM503155*001	13	AL	C	
	16	10135436	HAMMER-ASSY-W2	TK-RJM503216*001	13	AL	C	
	17	10135437	HAMMER-ASSY-W3	TK-RJM503217*001	13	AL	C	
	18	10135438	HAMMER-ASSY-W4	TK-RJM503218*001	13	AL	C	
	19	10135439	HAMMER-ASSY-B1	TK-RJM503219*001	9	AK	C	
	20	10135440	HAMMER-ASSY-B2	TK-RJM503220*001	9	AK	C	
	21	10135442	HAMMER-ASSY-B3	TK-RJM503221*001	9	AK	C	
	22	10135443	HAMMER-ASSY-B4	TK-RJM503222*001	9	AK	C	
	23	10129909	NUT/SUPPORT	RJM503163-001V01	4	AC	X	
	40	10153739	KEY UNIT	TK-RJM503153A*002	1	EG	C	
	42	1013 5958	CABLE	N30195B1B05-UL2896	1	AG	C	
Case unit								
N	24	10133640	PLATE/DISPLAY	RJM502914-001V01	1	AA	B	
N	25	10143181	SP BLOCK L	TK-RJM503150*003	1	AO	C	
N	26	10143182	SP BLOCK R	TK-RJM503151*003	1	AO	C	
	27	10135396	SPEAKER	S0612J46	2	AY	C	
	28	10127524	HARNESS	EH-2P-20-M412	2	AB	C	

Notes: N- New parts

Q- Quantity used per unit

R- Rank

R -A: Essential

B: Stock recommended

C: Others

X: No stock recommended

N	Item	Parts code	Parts Name	Specification	Q	Price Code	R	Remarks
N	29	10135272	KNOB/ROTARY	RJM502503-004V01	1	AA	C	
N	30	10129871	BUTTON-TACT-M412A(2P)	RJM502858-011V01	2	AE	C	
N	31	10129872	BUTTON-TACT-M412A(6P)	RJM502858-012V01	2	AJ	C	
N	32	10129873	BUTTON-TACT-M412A(1P)	RJM502858-013V01	3	AB	C	
N	33	10129874	BUTTON-TACT-M412A(2P)	RJM502858-014V01	4	AD	C	
	34	69245260	BUTTON/POWER	M340318-1	1	AA	C	
N	35	10143173	PCB ASSY/PSA	TK-RJM503538*001	1	BN	C	
N	CN401	10136859	CONNECTOR	HDC-052S-03	1	AG	X	
	CN402	35016384	CONNECTOR	B6B-PH-K-S	1	AA	X	
N	CN403	35014095	CONNECTOR	B7B-PH-K-S	1	AA	X	
	CN404	35405018	CONNECTOR	B3B-EH	1	AA	X	
	J401,402	35014382	CONNECTOR	HSJ2000-01-010	2	AE	X	
	J403	69325357	CONNECTOR	DJ-0702B-019	1	AB	X	
	L401,402,404,405	10057360	COIL	R2318-RB53-856396	4	BB	X	
	L403,406	10056228	COIL	R2318-RB53-856397	2	AB	X	
	SW401	69324103	SWITCH	SDKLA11000	1	AK	X	
N	36	10137155	CASE/SIDE IL	RJM502826-002V01	1	AL	C	
N	37	10137154	CASE/SIDE IR	RJM502827-002V01	1	AL	C	
N	38	10137151	CASE/SIDE L	RJM502856-002V01	1	AO	C	
N	39	10137152	CASE/SIDE R	RJM502857-002V01	1	AQ	C	
	41	10203785	SCREW	S-TRMA-6X30B3	4	AA	C	
Refurbish								
N	R-1	10143184	PANEL	TK-RJM503507*001	1	CC	C	
N	R-2	10143174	ASSY/MIDDLE CASE	TK-RJM503154*003	1	DF	C	
N	R-3	10143169	ASSY/LOWER CASE	TK-RJM503148*002	1	CM	C	
Accessory								
	-	10133504	ASSY/PEDAL	TK-RJM503195*001	1	BN	C	
	-	10128659	AC ADAPTOR	AD-12UL-TC2(D)	1	CE	C	120V
	-	10133371	AC ADAPTOR	AD-12FL-TC1(D)	1	CN	C	230V
	-	10132465	STAND/MUSIC	RJM502967-001V01	1	BT	C	
	-	10100792	AC CORD	INQ.1258(1)	1	AP	C	Korea
	-	10045706	AC CORD	EC2NC-M001A	1	AM	C	Euro type
	-	10045707	AC CORD	BC2NC-M001A	1	BD	C	UK type
OPTIONAL STAND(CS-55P)								
N	-	10133533	SCREW SET	TK-RJM503197*001	1	BI	C	

Notes: N- New parts

Q- Quantity used per unit

R- Rank

R -A: Essential

B: Stock recommended

C: Others

X: No stock recommended

Ver.1 : Sep. 2004

Replacement of the EXPLODED VIEW (P22)

Replacement of the PARTS LIST (P24-P26)

Ver.2 : Nov. 2004

Replacement of the PARTS LIST (P24, P25)

Ver.3 : Nov. 2005

Because both pictures of circuit boards in this picture, (M412-MAA1) are same, the illustration above is replaced (P5)

Replacement of the PARTS LIST (P24, P25, P26)

Ver.4 : Dec. 2005

Replacement of the EXPLODED VIEW (P22)

Replacement of the PARTS LIST (P26)

Ver.5 : Jul. 2008

Replacement of the EXPLODED VIEW (P22)

Replacement of the PARTS LIST (P25)

CASIO COMPUTER CO.,LTD.
Overseas Service Division

6-2, Hon-machi 1-Chome
Shibuya-ku, Tokyo 151-8543, Japan